

**WINDA**

**WINDA**

**2020 TYRE CATALOGUE**

**Passenger Car  
SUV and Light Truck**



**SHANDONG WANDA BOTO TYRE CO., LTD**

WWW.BOTOTYRE.COM  
ADDRESS:NO.77 TONGXING ROAD,KENLI  
DISTRICT ,DONGYING CITY,SHANDONG  
PROVINCE.CHINA 257506  
TEL:+86-546-2896916  
+86-546-2368887  
FAX:+86-546-2896955





Belt cutting machine made by Germany FISCHER



Apex assembling machine made by Netherland VMI



One stage Netherland VMI building machine



Tri-extruder made by Germany KRUPP



Steel cord calendar from Italy RUDOLF



Six-position bead ring building machine from USA BATEL

Shandong Wanda Boto Tyre Co.LTD is one of the large enterprises in China that specializes in manufacturing TBR, OTR, PCR and light truck tires. The company employs over 3600 staff among which more than 30% are granted with colleague degree or above. Located in the beautiful Yellow river estuary-Dongying, the company is a wholly-owned subsidiary of China Wanda Group, a national key high and new-tech enterprise which through 30 years' sustainable development has become a large enterprise group with 80 billion RMB of total assets, 6 million square meters land coverage, over 13000 staff and 4 major industries including chemicals, tires, cables and real estate development; and boasts a national technology center, national post-doctoral R&D workstation and 2 national laboratories, thus growing into a diversified international and modern group with chemical as leading industry, tire and cable industry as support, real estate as well as construction and installation industry as wings and capital operation as center. China Wanda Group is also in the list of China Top 500 enterprise, China Top 500 manufacturing enterprise as well as China Top 500 of Competent large enterprise group. Besides, the group has jointly invested or established business relations with worlds' Top 500 enterprises like SINOPEC, CNPC (China National Petroleum Corporation).

Wanda Group's 7 major series products are involved in drafting and finalizing the technical and test standard of their sectors in China; and Wanda Chemical products is awarded the Chinese Famous Brand, WINDA BOTO brand Tyre and Wanda Cable are awarded the Chinese Famous Trademark of which products are sold to more than 160 countries and regions globally.

As one of the pillar industries of Wanda Group, Wanda Boto tire company invested many famous brand and first-class manufacture, test and inspection equipment from USA, Germany, Italy, Japan and Netherlands with annual production capacity of 3 million unit of TBR, 15 million unit of PCR and 100,000 unit of OTR. The company introduces a complete technology innovation, products development and quality guarantee system and is the leader to develop new tire product in the tire industry. At present, all the tire products have been successfully approved by CCC, TS16949, ISO9001, DOT, ECE, GCC, INMETRO, ISO14001 and are sold nationwide and to 168 countries and regions in the world, thus ranking 35th among the world top 75 tire enterprises and is awarded "China Quality Integrity Enterprise" and "Foreign Trade Advanced Unit".



# PCR TYRE GUIDE BOOK



SHANDONG WANDA BOTO TYRE CO., LTD  
WWW.BOTOTYRE.COM  
ADDRESS:NO.77 TONGXING ROAD,KENLI  
DISTRICT,DONGYING CITY,SHANDONG  
PROVINCE,CHINA  
TEL:+86-546-2896916/2368887  
FAX:+86-546-2896955



## CONTENTS

- 05-06** **RUN FLAT TYRE**  
ZR01
- 07-14** **ULTRA HIGH PERFORMANCE**  
WH20 WH19 WH18 WH16
- 15-22** **PASSENGER**  
WP15 WP16 WP17 WP18
- 23-34** **SUV/LTR**  
WV11 WV11+ WH15 WL16 WA80+ WM81
- 35-38** **COMMERCIAL LTR**  
WL15 WR01
- 39-40** **STR**  
WL11
- 41-46** **WINTER TYRE**  
IS66 IS68 IS69



## RUN FLAT TYRE



# ZR01

SPECIAL FOR HIGH-END CAR

Feature	Performance Level
Comfort	High
High Mileage	High
Fuel Saving	High
Handling	High
Silence	High
Wet Traction	High



Adopt solid rib design, improve the turning performance of high speed driving, improve the driving stability and safety.



Adopt asymmetric four main groove design. Superior drainage performance, improve wetland control performance, excellent driving performance on wet slippery road in rainy days.



Design of pitch width. Uniform pitch size, long-term static performance can be maintained to ensure consistent wear of new and after use tires.



Due to the application of the side wall strengthening technology, when the tires lose air, it can also give the vehicle strong support to ensure the safety of driving.



Ordinary tires are completely supported by air pressure. When the tires lose air, the wheels will have severe friction with the tires and be damaged, which will bring serious safety risks to the vehicles.

SIZE	Load Index	Speed Rating	Standard Rim	Section Width (mm)	Overall Diameter (mm)	Max.load		Max.pressure		Tread Depth (mm)	U.T.Q.G
						kg	lbs	kpa	psi		
★ 225/50R17	94	W	7.0J	233	658	670	1477	300	44	7.9	420AA
225/55RF17	97	W	7.0J	233	680	780	1609	300	44	7.9	420AA
245/45ZRF18	96	W	8.0J	243	677	710	1585	300	44	7.9	420AA
★ 235/55R18	100	V	7.5J	245	715	800	1784	300	44	7.9	420AA
★ 245/50R18	100	W	7.5J	253	703	800	1764	300	44	7.9	420AA
★ 255/50R19	103	W	8.0J	265	709	875	1929	300	44	7.9	420AA

★ under development



# WH20

SPECIAL FOR SPORT CAR

	Comfort	<div style="width: 80%; background-color: orange;"></div>
	High Mileage	<div style="width: 60%; background-color: orange;"></div>
	Fuel Saving	<div style="width: 70%; background-color: orange;"></div>
	Handling	<div style="width: 90%; background-color: orange;"></div>
	Silence	<div style="width: 50%; background-color: orange;"></div>
	Wet Traction	<div style="width: 85%; background-color: orange;"></div>



Adopt sports profile with maximum rigidity and aggressive appearance.



Big shoulder block pattern with big sipes can avoid uneven wear and effectively reduce the heating up and resonance.



Asymmetric tread design and low rolling resistance provides excellent handling performance and outstanding driving properties on dry & wet road surfaces

SIZE	Load Index	Speed Rating	Standard Rim	Section Width (mm)	Overall Diameter (mm)	Max.load		Max.pressure		Tread Depth (mm)	U.T.Q.G
						kg	lbs	kpa	psi		
265/40R22	106	V	9 1/2J	271	771	950	2094	340	49	8.0	420AA
265/30ZR22	97	W	9 1/2J	271	719	730	1609	340	49	8.0	420AA
285/35ZR22	106	W	10J	290	759	950	2094	340	49	8.0	420AA
305/35R24	112	V	11J	313	824	1120	2469	340	49	8.0	420AA



# WH19

SPECIAL FOR SPORT CAR

	Comfort	<div style="width: 80%; background-color: #f4a460;"></div>
	High Mileage	<div style="width: 70%; background-color: #f4a460;"></div>
	Fuel Saving	<div style="width: 60%; background-color: #f4a460;"></div>
	Handling	<div style="width: 90%; background-color: #f4a460;"></div>
	Silence	<div style="width: 50%; background-color: #f4a460;"></div>
	Wet Traction	<div style="width: 85%; background-color: #f4a460;"></div>



Densely distributed blocks efficiently offset noises made by air emission in the grooves.



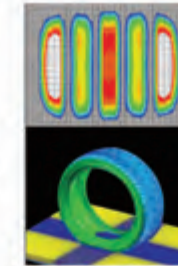
Four longitudinal groove design to ensure good drainage performance on wet surface



Widen central Pattern Rib to ensure the handling at the time of intense driving.



Optimal design of pattern order with changing pitches efficiently decreases vibrate and noise



Use the leading method FEA, Finite Element Analysis, and get a optimized pitch arrangement and displacement.

SIZE	Load Index	Speed Rating	Standard Rim	Section Width (mm)	Overall Diameter (mm)	Max.load		Max.pressure		Tread Depth (mm)	U.T.Q.G
						kg	lbs	kpa	psi		
225/35ZR20	90	W	8J	230	666	600	1323	340	49	8.0	420AA
245/30ZR22	92	W	8 1/2J	248	707	630	1389	340	49	8.0	420AA
255/35ZR20	97	W	9J	260	686	730	1609	340	49	8.0	420AA
265/35R22	102	V	9 1/2J	271	745	850	1874	340	49	8.0	420AA
275/40ZR20	106	W	9 1/2J	278	728	950	2094	340	49	8.0	420AA
305/40R22	114	V	11J	313	803	1180	2601	340	49	8.0	420AA
305/45R22	118	V	10J	303	833	1320	2910	340	49	8.0	420AA



# WH18

SPECIAL FOR MIDDLE AND HIGH-END CAR

	Comfort	<div style="width: 80%;"></div>
	High Mileage	<div style="width: 70%;"></div>
	Fuel Saving	<div style="width: 60%;"></div>
	Handling	<div style="width: 90%;"></div>
	Silence	<div style="width: 75%;"></div>
	Wet Traction	<div style="width: 95%;"></div>



Asymmetric pattern, big shoulder block, excellent control on dry road, wide grooves helps excellent water drainage.



Wider lateral grooves design helps improve the performance of drainage and wet grip.

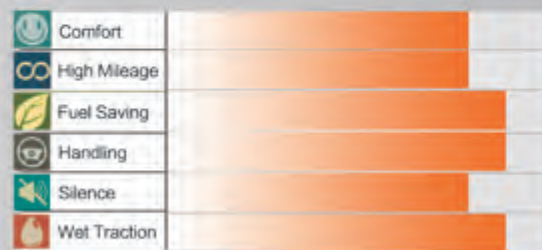
SIZE	Load Index	Speed Rating	Standard Rim	Section Width (mm)	Overall Diameter (mm)	Max.load		Max.pressure		Tread Depth (mm)	U.T.Q.G
						kg	lbs	kpa	psi		
175/65R14	82	H	5J	177	584	475	1047	300	44	7.7	420AA
175/65R14	86	T	5J	177	584	530	1168	340	49	7.7	420AA
195/65R15	91	H	6J	201	635	615	1356	300	44	7.9	420AA
195/65R15	95	H	6J	201	635	690	1521	340	49	7.9	420AA
195/60R15	88	V	6J	201	615	560	1235	300	44	7.9	420AA
205/60R15	91	H	6J	209	627	615	1356	300	44	7.9	420AA
205/65R15	94	H	6J	209	647	670	1477	300	44	7.9	420AA
205/70R15	96	T	6J	209	669	710	1565	300	44	7.9	420AA
215/65R15	96	H	6 1/2J	221	661	710	1565	300	44	7.9	420AA
195/60R16	89	H	6J	201	640	580	1279	300	44	7.9	420AA
205/50R16	87	V	6 1/2J	214	612	545	1201	300	44	7.9	420AA
205/55R16	91	V	6 1/2J	214	632	615	1356	300	44	7.9	420AA
205/55R16	91	W	6 1/2J	214	632	615	1356	300	44	7.9	420AA
205/60R16	92	H	6J	209	652	630	1389	300	44	7.9	420AA
205/65R16	95	H	6J	209	672	690	1521	300	44	7.9	420AA
215/55R16	97	W	7J	226	642	730	1611	340	49	7.9	420AA
215/60R16	95	H	6 1/2J	221	664	690	1521	300	44	7.9	420AA
215/65R16	98	H	6 1/2J	221	686	750	1654	300	44	7.9	420AA
225/55R16	95	W	7J	233	654	690	1521	300	44	7.9	420AA
225/60R16	98	V	6 1/2J	228	676	750	1653	300	44	7.9	420AA
235/60R16	100	H	7J	240	688	800	1763	300	44	7.9	420AA
195/55R16	87	V	6.0J	201	620	545	1201	300	44	7.9	420AA
205/45R16	87	V	7.0J	206	590	545	1201	340	49	7.9	420AA
* 205/55R17	94	V	6.5J	214	658	670	1477	340	49	7.9	420AA
245/45R17	99	W	8.0J	243	652	775	1708	340	49	7.9	420AA
215/50R17	94	W	7 1/2J	225	634	670	1478	340	49	7.9	420AA
215/60R17	92	W	8J	230	637	630	1389	340	49	7.9	420AA
225/45ZR17	94	W	8J	236	669	670	1477	300	44	7.9	420AA
225/45ZR17	97	V	7 1/2J	245	693	730	1609	300	44	7.9	420AA
225/40ZR18	95	W	8 1/2J	248	680	690	1521	340	49	7.9	420AA
235/45ZR18	100	V	7 1/2J	245	715	800	1763	300	44	7.9	420AA
235/50R18	87	V	6.0J	201	620	545	1201	300	44	7.9	420AA
235/55R18	99	W	8.0J	243	652	775	1708	340	49	7.9	420AA
225/60R18	100	H	6.5J	228	727	800	1763	300	44	7.9	420AA
* 215/50R18	92	W	7.0J	226	673	630	1389	300	44	7.9	420AA
215/55R18	99	H	7.0J	226	693	690	1521	300	44	7.9	420AA
* 225/50R18	99	W	7.0J	233	683	775	1709	340	49	7.9	420AA
225/55R18	98	H	7.0J	233	705	750	1653	300	44	7.9	420AA
245/50R18	104	V	7.5J	253	703	900	1984	340	49	7.9	420AA
255/45R18	103	W	8.5J	255	687	872	1929	340	49	7.9	420AA
235/50R19	99	V	7.5J	245	719	775	1708	300	44	7.9	420AA
* 235/35R19	91	W	8.5J	241	647	615	1356	340	49	7.9	420AA
255/45R19	104	W	8.5J	255	713	900	1984	340	49	7.9	420AA
* 225/45R19	96	W	7.5J	225	685	710	1565	340	49	7.9	420AA
* 245/45R19	102	W	8.0J	243	703	850	1874	340	49	7.9	420AA
* 255/40R19	100	W	9.0J	260	687	800	1764	340	49	7.9	420AA
245/35ZR20	95	W	8.5J	248	680	690	1521	340	49	7.9	420AA

\* : under development

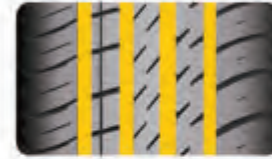


# WH16

SPECIAL FOR HIGH-END CAR



Asymmetric pattern design provide a strong grip and confident maneuvering and tread even wearing during turning.



Four wide longitudinal groove design and wide contact patch helps to deliver a high speed performance and excellent water drainage.



Angular sipes help reduce noise and provide comfortable riding.



Special tread ingredient design with Silicon helps to provide a good grip both on dry and wet road. Longer mileage.

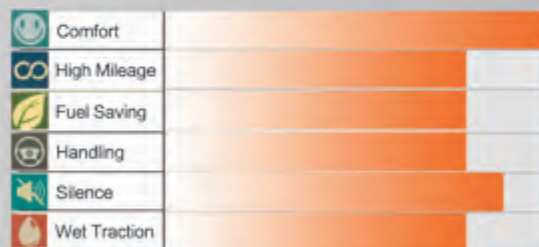
SIZE	Load Index	Speed Rating	Standard Rim	Section Width (mm)	Overall Diameter (mm)	Max.load		Max.pressure		Tread Depth (mm)	U.T.Q.G
						kg	lbs	kpa	psi		
195/50R15	82	V	6J	201	577	475	1047	350	51	7.9	420AA
185/55R15	82	V	6J	194	585	475	1047	350	51	7.9	420AA
195/55R15	85	V	6J	201	595	515	1135	350	51	7.9	420AA
205/50R16	87	V	6.5J	214	612	545	1201	350	51	7.9	420AA
215/55R16	97	W	7J	226	642	730	1609	340	50	7.9	420AA
225/55R16	95	W	7J	233	654	690	1521	350	51	7.9	420AA
195/50R16	88	V	6J	201	602	560	1235	340	50	7.9	420AA
225/55R17	101	W	7J	233	680	825	1819	340	50	7.9	420AA
205/40R17	84	W	7J	212	596	500	1102	350	51	7.9	420AA
215/40R17	87	W	7.5J	218	604	545	1201	350	51	7.9	420AA
215/45R17	91	W	7J	213	626	615	1356	340	50	7.9	420AA
225/45R17	91	W	7.5J	225	634	615	1356	350	51	7.9	420AA
235/45R17	97	W	8J	236	644	730	1609	340	50	7.9	420AA
205/50R17	93	W	6.5J	214	638	650	1433	340	50	7.9	420AA
225/50R17	98	W	7J	233	658	750	1653	340	50	7.9	420AA
235/50R17	96	W	7.5J	245	668	710	1565	350	51	7.9	420AA
215/55R17	98	W	7J	225	668	750	1653	340	50	7.9	420AA
235/55R17	99	W	7.5J	230	690	775	1709	350	51	7.9	420AA
225/45R18	95	W	7.5J	241	659	615	1356	350	51	7.9	420AA
225/40R18	92	W	8J	243	637	630	1389	340	50	7.9	420AA
235/40R18	95	W	8.5J	218	645	690	1521	350	51	7.9	420AA
245/45R18	100	W	8J	248	677	800	1764	350	51	7.9	420AA
215/35R18	84	W	7.5J	248	607	500	1102	350	51	7.9	420AA
245/40R18	97	W	8.5J	201	653	730	1609	350	51	7.9	420AA
245/35R20	95	W	8.5J	233	680	690	1521	340	50	7.9	420AA





# WP15

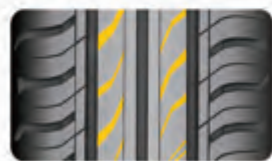
ECONOMIC CAR TYRE



Big shoulder block pattern with small sipes can avoid uneven wear and effectively reduce the heating up and resonance.



Continuous longitudinal groove design for excellent water drainage, so provide good grip and maneuvering on wet road.



Lateral small sipes design enhance the maneuvering performance.



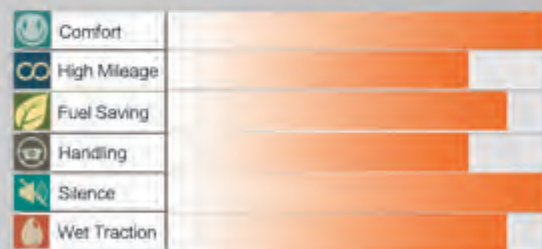
Use the FEA, Finite Element Analysis, and get a optimized pitch arrangement, displacement to reduce noise.

SIZE	Load Index	Speed Rating	Standard Rim	Section Width (mm)	Overall Diameter (mm)	Max.load		Max.pressure		Tread Depth (mm)	U.T.Q.G
						kg	lbs	kpa	psi		
175/60R13	77	T	5J	177	540	412	908	300	44	7.7	380AA
165/65R13	77	T	5.00B	170	544	412	908	350	51	7.7	380AA
155/70R13	75	T	4.5J	157	548	387	853	300	44	7.7	380AA
155/80R13	79	T	4.5J	157	578	437	963	300	44	7.7	380AA
155/65R13	73	T	4.5J	157	532	365	805	300	44	7.7	380AA
165/70R13	79	T	5.00B	170	562	437	963	350	51	7.7	380AA
165/70R13 <sup>-rsw</sup>	83	T	5.00B	170	562	487	1074	340	50	7.7	380AA
175/70R13	82	H	5.00B	177	576	475	1074	350	51	7.7	380AA
185/70R13	86	T	5.50B	189	590	530	1168	350	51	7.7	380AA
185/60R14	82	H	5.5J	189	578	475	1047	350	51	7.7	380AA
165/65R14	79	H	5J	170	570	437	963	350	51	7.7	380AA
175/65R14	82	H	5J	177	584	475	1047	350	51	7.7	380AA
185/65R14	86	H	5.5J	189	596	530	1168	350	51	7.7	380AA
165/70R14	81	T	5J	170	588	462	1019	350	51	7.7	380AA
165/70R14	85	T	5J	170	588	515	1135	340	50	7.7	380AA
175/70R14	84	T	5J	177	602	500	1102	350	51	7.7	380AA
185/70R14	88	T	5.5J	189	616	560	1235	350	51	7.7	380AA
195/70R14	91	T	6J	201	630	615	1356	350	51	7.7	380AA
175/70R14C	91/93	S	5J	177	602	690/1435	1520/1435	375	54	9.0	380AA



# WP16

SPECIAL FOR MIDDLE-END CAR



Silent pitch arrangement, tread design of unequal pitch width, arrangement and displacement help to provide experience of quiet driving and effectively reduce tire resonant noise.



Four wide longitudinal groove design and wide contact patch helps to deliver a high speed performance and excellent water drainage.



Wide central main rib design on tread center helps maintain a continuous and homolographic contact area for constant straight riding.



Use the leading method FEA, Evenly suffer the pressure, avoid uneven wear. Effectively reduce tyre resonant noise. Perfect high speed performance.

SIZE	Load Index	Speed Rating	Standard Rim	Section Width (mm)	Overall Diameter (mm)	Max.load		Max.pressure		Tread Depth (mm)	U.T.Q.G
						kg	lbs	kpa	psi		
205/60R14	88	H	6.0J	209	602	560	1235	300	44	7.9	420AA
195/60R14	86	H	6.0J	201	590	520	1168	350	51	7.9	420AA
205/70R14	93	T	6.0J	209	644	650	1433	300	44	7.9	420AA
185/60R15	84	H	5.5J	189	603	500	1102	350	51	7.9	420AA
195/60R15	88	V	6.0J	201	615	560	1235	350	51	7.9	420AA
205/60R15	91	H	6.0J	209	627	615	1356	350	51	7.9	420AA
185/65R15	88	H	5.5J	189	621	560	1235	350	51	7.9	420AA
195/65R15	91	H	6.0J	201	635	615	1356	350	51	7.9	420AA
195/65R15	95	H	6.0J	201	635	690	1521	340	60	7.9	420AA
205/65R15	94	H	6.0J	209	647	670	1477	350	51	7.9	420AA
215/60R15	94	H	6.5J	221	639	670	1477	350	51	7.9	420AA
215/65R15	96	H	6.5J	221	661	710	1565	350	51	7.9	420AA
205/70R15	96	T	6.0J	209	669	710	1565	300	44	7.9	420AA
215/70R15	98	T	6.5J	221	683	750	1653	300	44	7.9	420AA
205/55R16	91	V/W	6.5J	214	632	615	1356	350	51	7.9	420AA
205/60R16	92	H	6.0J	209	652	630	1389	350	51	7.9	420AA
205/60R16	96	H	6.0J	209	652	710	1565	340	60	7.9	420AA
215/60R16	99	H	6.5J	221	664	775	1709	340	60	7.9	420AA
225/60R16	98	V	6.5J	228	676	750	1653	350	51	7.9	420AA
215/65R16	98	H	6.5J	221	686	750	1653	350	51	7.9	420AA
205/65R16	95	H	6.0J	209	672	690	1521	300	44	7.9	420AA
235/60R16	100	H	7.0J	240	688	800	1764	300	44	7.9	420AA
225/60R17	99	H	6.5J	228	702	775	1709	350	51	7.9	420AA



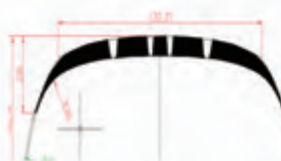
Four wider main grooves, much steel, improves wet grip on rainy days.



Shoulder reinforcing rib design to ensure handling performance as well as reducing noise.



Special for enabling high tire pressure and narrow tread design and low rolling resistance structure, reduce energy loss.

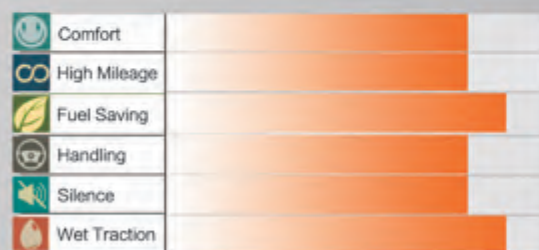


More reasonable crown radius design makes the tread contact ground pressure evenly distributed, prevents partial wear or other abnormal wear.



# WP17

ECONOMIC CAR TYRE

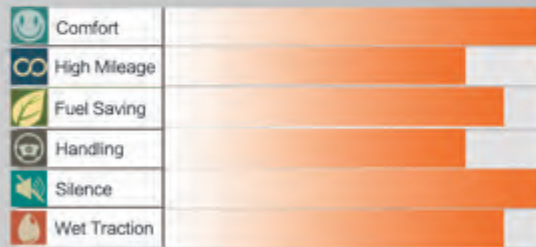


SIZE	Load Index	Speed Rating	Standard Rim	Section Width (mm)	Overall Diameter (mm)	Max.load		Max.pressure		Tread Depth (mm)	U.T.Q.G
						kg	lbs	kpa	psi		
175/70R13	82	T	5J	177	576	475	1047	300	44	7.2	440AA
185/60R14	82	H	5 1/2J	189	578	475	1047	300	44	7.2	440AA



# WP18

SPECIAL FOR MIDDLE-END CAR



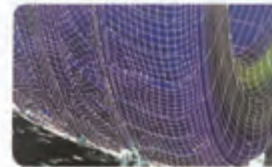
The closed shoulder seam reduces the impact noise of the tire and also prevents irregular wear.



Small decorative shoulder pattern designed to absorb vibration and reduce noise.



The reinforcing rib is designed to enhance the overall rigidity of the pattern to ensure high speed safety.



Through the noise simulation test, the groove distribution and groove Angle which are closely related to the pattern noise are adjusted reasonably, and the pattern noise is reduced.

SIZE	Load Index	Speed Rating	Standard Rim	Section Width (mm)	Overall Diameter (mm)	Max.load		Max.pressure		Tread Depth (mm)	U.T.Q.G
						kg	lbs	kpa	psi		
185/60R15	84	H	5.5J	189	603	500	1102	300	44	7.9	420AA
185/65R15	88	H	5.5J	189	621	560	1235	300	44	7.9	420AA
★ 195/55R15	85	H	6J	201	595	515	1135	300	44	7.9	420AA
195/60R15	88	V	6J	201	615	560	1235	300	44	7.9	420AA
195/65R15	91	H	6J	201	635	615	1356	300	44	7.9	420AA
205/65R15	94	H	6J	209	647	670	1477	300	44	7.9	420AA
★ 195/60R16	89	H	6J	201	640	580	1279	300	44	7.9	420AA
235/60R16	100	V	7J	240	688	800	1764	300	44	7.9	420AA
205/55R16	91	V	6.5J	214	632	615	1356	300	44	7.9	420AA
205/60R16	92	H	6J	209	652	630	1389	300	44	7.9	420AA
215/55R16	97	W	7J	226	642	730	1609	340	49	7.9	420AA
215/60R16	95	H	6.5J	221	664	690	1521	300	44	7.9	420AA
215/65R16	98	H	6.5J	221	686	750	1654	300	44	7.9	420AA
225/55R16	95	W	7J	233	654	690	1521	300	44	7.9	420AA

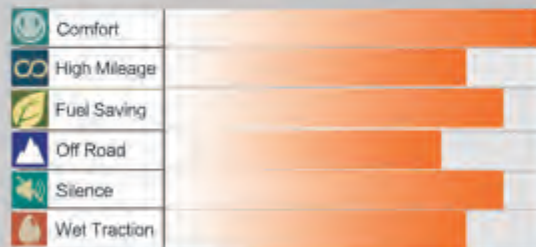
★ : under development



SUVLTR

# WV11

SUV TYRE



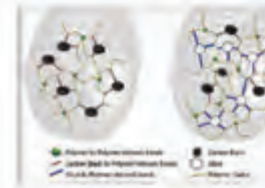
With 4-U-shaped groove design, the excellent water draining performance and gripping power on wet assured.



Multiple small tread pattern design improves driving comfort.



The big tread blocks on shoulder enhance tire strength so that the wear-resistance ability assured and uneven wearing avoided.



The silicon compounds also help reduce the friction between rubber molecules, energy loss, rolling resistance and enhance fuel economy.

SUVLTR

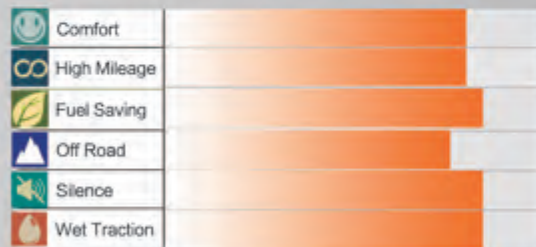
SIZE	Load Index	Speed Rating	Standard Rim	Section Width (mm)	Overall Diameter (mm)	Max. load		Max. pressure		Tread Depth (mm)	U.T.Q.G
						kg	lbs	kpa	psi		
P215/75R15	100	T	6J	215	703	800	1764	300	44	8.5	440AA
P225/70R15	100	H	6.5J	225	697	800	1764	300	44	8.5	440AA
P225/75R15	102	T	6J	223	719	850	1874	300	44	8.5	440AA
P235/75R15	105	T	6.5J	235	733	920	2028	300	44	8.5	440AA
P225/70R16	103	H	6.5J	228	722	875	1929	350	51	8.5	440AA
P235/70R16	106	H	7J	240	736	950	2091	350	51	8.5	440AA
P245/70R16	107	H	7J	248	750	975	2194	350	51	8.5	440AA
P245/75R16	111	T	7J	248	774	1090	2403	350	51	8.5	440AA
P255/70R16	111	H	7.5J	260	764	1090	2403	350	51	8.5	440AA
P265/70R16	112	H	8J	272	778	1120	2469	350	51	8.5	440AA
P265/75R16	114	T	7.5J	267	804	1180	2601	350	51	8.5	440AA
P215/70R16	100	H	6.5J	221	708	800	1764	350	51	8.5	440AA
P235/65R17	104	H	7J	240	738	900	1984	350	51	8.5	440AA
P245/65R17	107	H	7J	248	750	975	2149	350	51	8.5	440AA
P265/65R17	112	H	8J	272	778	1120	2469	350	51	8.5	440AA
P265/70R17	115	H	8J	272	804	1215	2679	350	51	8.5	440AA
P245/70R17	110	H	7J	248	778	1060	2337	350	51	8.5	440AA
P235/60R18	107	H	7J	240	739	975	2149	340	50	8.5	540AA
P245/60R18	105	H	7J	248	751	925	2038	300	44	8.5	540AA
P255/55R18	105	H	8J	265	757	925	2038	300	44	8.5	540AA
P245/55R19	103	H	7.5J	253	753	875	1929	300	44	8.5	540AA
P255/55R19	107	H	8J	265	763	975	2149	300	44	8.5	540AA
P255/50R19	107	H	8J	265	739	975	2149	340	49	8.5	540AA
P275/55R20	117	V	8.5J	284	810	1285	2833	340	50	8.5	540AA
P275/45R20	110	V	9J	273	759	1060	2337	340	50	8.5	540AA
LT265/75R16	123/120	S	7.5J	267	804	1350/1400	3115/3285	550	80	10.5	
LT245/75R17	121/118	S	7.0J	248	800	1450/1520	3195/2910	550	80	10.5	
LT265/70R17	121/118	S	8.0J	272	804	1450/1520	3195/2910	550	80	10.5	



SUV/LTR

# WV11+

SUV TYRE



Adopt zigzag main groove design. Four zigzag wide longitudinal grooves improve the drainage and grasping performance in rainy days.



Adopt reinforcing rib design, reinforcing rib design increases the rigidity of the pattern block and has the function of cleaning stone.



The tread end adopts step design to increase the sidewall anti-scratch and anti-friction function.



Optimal design of grounding shape. The tread end adopts step design to increase the sidewall anti-scratch and anti-friction function.

SUV/LTR

SIZE	Load Index	Speed Rating	Standard Rim	Section Width (mm)	Overall Diameter (mm)	Max.load		Max.pressure		Tread Depth (mm)	U.T.Q.G
						kg	lbs	kpa	psi		
★ P215/60R17	104	V	7.5J	245	715	900	1984	340	49	8.5	540AA
P215/65R17	99	H	6.5J	221	712	775	1709	300	44	8.5	540AA
★ P235/55R18	104	H	6.5J	221	690	710	1565	300	44	8.5	540AA
P235/65R18	106	H	7J	240	763	950	2094	300	44	8.5	540AA
★ P265/70R18	116	H	8.0J	272	829	1250	2756	300	44	8.5	540AA
P285/60R18	116	H	8.5J	292	799	1250	2756	300	44	8.5	540AA
P265/60R18	110	H	8J	272	775	1060	2336	300	44	8.5	540AA
P235/55R19	101	V	7.5J	245	741	825	1819	300	44	8.5	540AA
P245/55R19	103	H	7.5J	253	753	875	1929	300	44	8.5	540AA
P225/55R19	99	V	7J	233	731	775	1709	300	44	8.5	540AA
P235/55R20	105	H	7.5J	245	766	925	2039	340	49	8.5	540AA
★ P245/45R20	103	V	8.0J	243	728	875	1929	340	49	8.5	540AA
P265/50R20	111	V	8.5J	277	774	1090	2403	340	49	8.5	540AA
P255/50R20	109	V	8J	265	764	1030	2271	340	49	8.5	540AA
P285/50R20	112	H	9J	297	794	1120	2469	300	44	8.5	540AA
★ P255/45R21	102	V	8.5J	255	763	850	1874	300	44	8.5	540AA
P275/45R21	110	V	9J	273	781	1060	2337	340	49	8.5	540AA
P275/40R22	107	V	9.5J	278	779	975	2150	340	49	8.5	540AA

★ : under development





SUVLTR

SUVLTR



# WL16

ALL TERRAIN TYRE

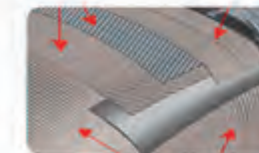
	Comfort	<div style="width: 80%;"></div>
	High Mileage	<div style="width: 70%;"></div>
	Fuel Saving	<div style="width: 60%;"></div>
	Off Road	<div style="width: 90%;"></div>
	Silence	<div style="width: 50%;"></div>
	Wet Traction	<div style="width: 85%;"></div>



Special Shoulder pattern block design, provide strong drive power and excellent off-road performance.



Special pattern design helps reduce profile creep strain on uneven road and strengthen contact patch lateral rigidity.



High-tensile steel wires plus nylon reinforced ply, excellent anti-piercing resistance.

SIZE	PR	Load Index	Speed Rating	Standard Rim	Section Width (mm)	Overall Diameter (mm)	Max.load		Max.pressure		Tread Depth (mm)
							kg	lbs	kpa	psi	
31*10.5R15LT	6	109	Q	8.5J	268	775	1030	2270	350	51	12.5
LT225/75R16	10	115/112	Q	6J	223	744	1215/1120	2680/2470	550	80	11.5
LT245/75R16	10	120/116	Q	7J	248	774	1400/1250	3085/2755	550	80	12.5
LT215/85R16	10	115/112	Q	6J	216	772	1215/1120	2680/2470	550	80	11.5
LT235/85R16	10	120/116	Q	6.5J	235	806	1400/1250	3085/2755	550	80	12.5





SUV/LTR

SUV/LTR



# WA80+

ALL TERRAIN TYRE

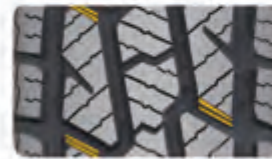
	Comfort	<div style="width: 80%;"></div>
	High Mileage	<div style="width: 90%;"></div>
	Fuel Saving	<div style="width: 70%;"></div>
	Off Road	<div style="width: 95%;"></div>
	Silence	<div style="width: 60%;"></div>
	Wet Traction	<div style="width: 85%;"></div>



Deep pattern + High saturation in contact with the ground + mixed pattern design + Wear resistant compound, for much longer mileage



Special contour profile, 2% more contact area, improve the mileage and turning performance.



Special pattern design, avoid stone or other thing clamped in the grooves.



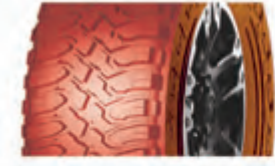
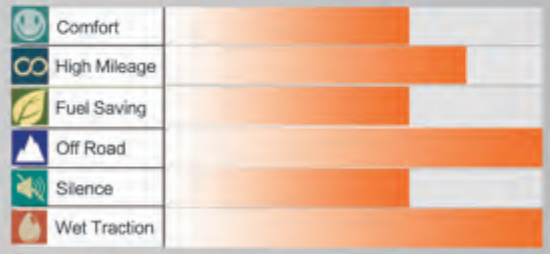
Perfect shape of ground contact , provide good wear-resisting property and stability.

SIZE	PR	Load Index	Speed Rating	Standard Rim	Section Width (mm)	Overall Diameter (mm)	Max.load		Max.pressure		Tread Depth (mm)	U.T.Q.G
							kg	lbs	kpa	psi		
31*10.5R15LT	6	109	Q	8.5J	268	775	1030	2270	350	50	12.5	
LT215/75R15	6	100/97	S	6.0J	216	703	800/730	1765/1610	350	50	9.50	
LT235/75R15	6	104/101	Q	6.5J	235	733	900/825	1985/1820	350	50	11.5	
LT215/85R16	10	115/112	Q	6.0J	216	772	1215/1120	2680/2470	550	80	11.0	
LT235/85R16	10	120/116	Q	6.5J	235	806	1380/1260	3042/2778	550	80	12.5	
LT225/75R16	10	115/122	Q	6.0J	223	744	1215/1120	2680/2470	550	80	11.0	
LT245/75R16	10	120/116	Q	7.0J	248	774	1380/1260	3042/2778	550	80	12.5	
LT265/75R16	10	123/120	Q	7.5J	267	804	1550/1400	3415/3085	550	80	12.5	
LT285/75R16	8	122/119	Q	8.0J	286	834	1500/1360	3305/3000	450	65	12.8	
LT265/70R17	10	121/118	Q	8.0J	272	804	1450/1320	3195/2910	550	80	12.5	
LT275/65R18	10	123/120	Q	8.0J	279	815	1550/1400	3415/3085	550	80	12.8	
P215/70R16		100	S	6.5J	221	708	800	1764	300	44	9.8	540AA
P255/70R16		111	S	7.5J	260	764	1090	2403	300	44	9.6	540AA
P245/75R16		111	S	7.0J	248	774	1080	2403	300	44	9.6	540AA
P235/70R16		106	S	7.0J	240	736	950	2094	300	44	9.6	540AA
P265/70R16		112	S	8.0J	272	778	1120	2469	300	44	9.8	540AA
P265/75R16		116	S	7.5J	267	804	1250	2756	300	44	9.6	540AA
P265/70R17		115	S	8.0J	272	804	1215	2678	300	44	9.8	540AA



# HALUDR WM81

MUD TERRAIN TYRE



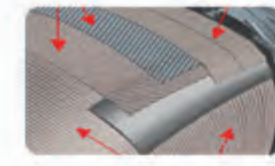
The balanced void ratio efficiently removes mud and dirt from the tread to provide continuous off-road traction.



The balanced void ratio efficiently removes mud and dirt from the tread to provide continuous off-road traction.



HALUDR mud terrain tire provide traction over various off-road terrain.



High-tensile steel wires plus nylon reinforced ply, excellent anti-piercing resistance.

SIZE	PR	Load Index	Speed Rating	Standard Rim	Section Width (mm)	Overall Diameter (mm)	Max.load		Max.pressure		Tread Depth (mm)
							kg	lbs	kpa	psi	
31*10.5R15LT	6	109	Q	8.5J	268	775	1030	2271	350	50	15
LT235/75R15	6	104/101	Q	6.5J	235	733	900	1985	350	50	15
LT245/75R16	10	120/116	Q	7J	248	774	1380	342	550	80	15
* LT285/75R16	10	120/117	Q	8.0J	272	776	1400	1285	550	80	15
* LT265/65R17	10	126/123	Q	8.0J	286	834	1700	1550	550	80	15
* LT265/70R17	10	121/118	Q	8.0J	272	804	1450	1320	550	80	15

\* : under development



COMMERCIAL LTR

# WL15

LIGHT TRUCK (VAN) TYRE

	Comfort	<div style="width: 90%;"></div>
	High Mileage	<div style="width: 85%;"></div>
	Fuel Saving	<div style="width: 80%;"></div>
	Off Road	<div style="width: 40%;"></div>
	Silence	<div style="width: 85%;"></div>
	Wet Traction	<div style="width: 85%;"></div>



Three longitudinal “Z” groove design for excellent water drainage and good handling.



Special wear-resistant compound for much longer mileage, dramatically increase the economy.



Wide tread and strong carcass, improve the loading capacity and high speed performance

SIZE	PR	Load Index	Speed Rating	Standard Rim	Section Width (mm)	Overall Diameter (mm)	Max.load		Max.pressure		Tread Depth (mm)
							kg	lbs	kpa	psi	
185R14C	8	102/100	S	5.5J	188	650	850/800	1875/1765	475	69	9.5
195R14C	8	106/104	S	5.5J	198	666	950/900	2095/1985	475	69	9.5

COMMERCIAL LTR



# WRO1

LIGHT TRUCK (VAN) TYRE

	Comfort	<div style="width: 100%; height: 10px; background-color: orange;"></div>
	High Mileage	<div style="width: 95%; height: 10px; background-color: orange;"></div>
	Fuel Saving	<div style="width: 90%; height: 10px; background-color: orange;"></div>
	Off Road	<div style="width: 70%; height: 10px; background-color: orange;"></div>
	Silence	<div style="width: 95%; height: 10px; background-color: orange;"></div>
	Wet Traction	<div style="width: 95%; height: 10px; background-color: orange;"></div>



Three longitudinal “S” saw teeth groove design for excellent water drainage and good handling.



Deep pattern + High saturation in contact with the ground + mixed pattern design + Wear resistant compound, for much longer mileage.



Mixed pattern design for Shoulder, effectively reduce noise.

SIZE	PR	Load Index	Speed Rating	Standard Rim	Section Width (mm)	Overall Diameter (mm)	Max.load		Max.pressure		Tread Depth (mm)
							kg	lbs	kpa	psi	
165R14C	8	97/95	S	4.5J	167	622	730/690	1609/1521	450	65	9.5
175/75R14C	8	99/98	S	5.0J	177	618	775/750	1708/1653	475	69	9.5
185R14C	8	102/100	R	5.5J	188	650	850/800	1857/1765	450	65	9.5
195R14C ~WSW	8	106/104	R	5.5J	198	686	950/900	2095/1985	450	65	9.5
205R14C	8	109/107	R	6.0J	208	686	1030/975	2270/2150	450	65	9.8
185R15C	8	103/102	R	5.5J	188	674	875/850	1930/1875	450	65	9.8
* 215/75R14C	8	112/110	R	6.0J	216	678	1120/1060	2470/2335	475	69	9.5
195R15C ~WSW	8	106/104	R	5.5J	196	693	950/900	2095/1985	450	65	10.0
195/70R15C	8	104/102	R	6.0J	201	655	900/850	1985/1875	450	65	9.5
205/70R15C	8	106/104	R	6.0J	209	669	950/900	2095/1985	450	65	9.5
215/70R15C	8	104/101	S	6.5J	221	683	900/825	1984/1819	450	65	9.5
* 225/70R15C	8	112/110	R	6.5J	228	697	1120/1060	2470/2335	450	69	9.5
* 235/65R16C	8	115/113	R	7.0J	240	712	1215/1150	2680/2540	475	69	9.5
* 215/65R16C	8	109/107	R	6.5J	221	686	1030/975	2270/2150	475	69	9.5
* 205/65R16C	8	107/105	R	6.0J	209	672	975/925	2150/2040	475	69	9.5
* 195/65R16C	8	104/102	R	6.0J	201	660	900/850	1985/1875	475	69	9.5
* 225/65R16C	8	112/110	R	6.5J	228	698	1120/1060	2470/2335	475	69	9.5
185/75R16C	8	104/102	R	5.0J	184	681	900/850	1985/1875	475	69	9.5
195/75R16C	8	107/105	R	5.5J	196	698	975/925	2150/2042	475	69	9.5
215/75R16C	8	113/111	R	6.0J	216	728	1150/1090	2535/2405	475	69	9.8

\* : under development



# WL11

SPORT TRAILER (ST) TYRE

	Comfort	<div style="width: 90%;"></div>
	High Mileage	<div style="width: 85%;"></div>
	Fuel Saving	<div style="width: 80%;"></div>
	Off Road	<div style="width: 75%;"></div>
	Silence	<div style="width: 70%;"></div>
	Wet Traction	<div style="width: 65%;"></div>

STR

STR



All sipes for anti-slipping function enhance tire performance in starting acceleration and braking.



Wide tead design helps optimize contact patch shape, uniform tire contact patch pressure.



Specially treated shoulder profile helps reduce heating up on the shoulder.

SIZE	PR	Load Index	Speed Rating	Standard Rim	Section Width (mm)	Overall Diameter (mm)	Max.load		Max.pressure		Tread Depth (mm)
							kg	lbs	kpa	psi	
ST205/75R14	6	100/96	L	5.5J	203	664	800/710	1760/1570	350	50	8
ST205/75R14	8	105/101	L	5.5J	203	664	925/825	2040/1820	450	65	8
ST205/75R15	6	101/97	L	5.5J	203	689	825/730	1820/1610	350	50	8
ST205/75R15	8	107/102	L	5.5J	203	689	975/850	2150/1870	450	65	8
ST225/75R15	8	113/108	L	6J	223	719	1150/1000	2540/2200	450	65	8
ST225/75R15	10	117/112	L	6J	223	719	1285/1120	2830/2470	550	80	8
ST235/80R16	10	124/120	L	6.5J	235	782	1600/1400	3520/3080	550	80	8



# IS66

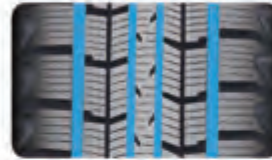
WINTER TYRE

	Comfort	<div style="width: 100%; height: 10px; background-color: #f4a460;"></div>
	High Mileage	<div style="width: 90%; height: 10px; background-color: #f4a460;"></div>
	Fuel Saving	<div style="width: 80%; height: 10px; background-color: #f4a460;"></div>
	Winter	<div style="width: 100%; height: 10px; background-color: #f4a460;"></div>
	Silence	<div style="width: 70%; height: 10px; background-color: #f4a460;"></div>
	Wet Traction	<div style="width: 95%; height: 10px; background-color: #f4a460;"></div>

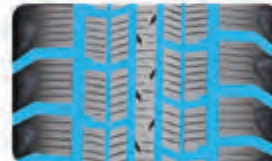
WINTER



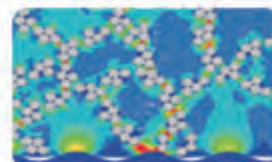
Special pattern design with high density jag sipes make sure the good grip and brake performance on snow or ice covered road.



Four longitudinal grooves design for excellent water drainage and good handling.



Apply for the computer and gene combination simulation design, have the best pattern noise combination, improve vehicle comfort.



Special snow tyre compound and structure design.

SIZE	Load Index	Speed Rating	Standard Rim	Section Width (mm)	Overall Diameter (mm)	Max.load		Max.pressure		Tread Depth (mm)
						kg	lbs	kpa	psi	
165/70R13	79	Q	5.00B	170	562	437	963	350	51	8.0
155/65R13	73	Q	4.50B	157	532	365	804	300	44	8.8
175/70R13	82	Q	5.00B	177	576	475	1047	300	44	8.8
175/70R14	84	Q	5.0J	177	602	500	1102	300	44	9.0
185/60R14	82	Q	5.5J	189	578	475	1047	350	51	8.0
195/60R14	86	Q	6J	201	590	530	1168	350	51	8.0
165/60R14	75	S	5.0J	170	554	387	853	300	44	8.8
185/70R14	88	S	5.5J	189	616	560	1234	300	44	8.0
175/65R14	82	Q	5J	177	584	475	1047	300	44	8.8
185/65R14	86	S	5.5J	189	596	530	1138	300	44	9.0
185/65R15	88	Q	5.5J	189	621	560	1235	350	51	8.0
195/65R15	91	Q	6J	201	635	615	1356	350	51	8.0
195/60R15	88	Q	6J	201	615	560	1235	350	51	8.0
195/55R15	85	Q	6J	201	595	515	1135	350	51	8.0
195/70R15C	104/102	Q	6J	201	655	900/850	1985/1875	450	65	10
215/75R15	100	Q	6J	216	703	800	1764	300	44	9.0
185/60R15	84	S	5.5J	189	603	500	1102	300	44	9.0
205/65R15	94	S	6J	209	647	870	1477	300	44	9.0
175/65R15	84	Q	5J	177	609	500	1102	300	44	8.8
205/55R16	91	Q	6.5J	214	632	615	1356	350	51	8.0
215/60R16	95	Q	6.5J	221	664	690	1521	300	44	9.0
205/60R16	92	S	6J	209	652	630	1388	300	44	9.0
215/55R16	93	S	7J	226	642	650	1433	300	44	9.0
195/60R16	89	S	6J	201	640	590	1278	300	44	9.0
215/70R16	100	S	6.5J	221	708	800	1764	300	44	8.0
225/70R16	103	S	6.5J	228	722	875	1929	300	44	9.0
225/65R17	102	Q	6.5J	228	724	850	1874	300	44	9.0
215/60R17	96	S	6.5J	221	690	710	1567	300	44	9.0
265/65R17	112	S	8J	272	776	1120	2471	300	44	9.2
235/60R18	103	Q	7J	240	739	875	1929	300	44	9.0

WINTER



# IS68

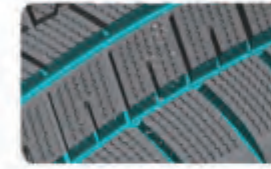
WINTER TYRE

	Comfort	<div style="width: 80%;"></div>
	High Mileage	<div style="width: 70%;"></div>
	Fuel Saving	<div style="width: 60%;"></div>
	Winter	<div style="width: 100%;"></div>
	Silence	<div style="width: 75%;"></div>
	Wet Traction	<div style="width: 85%;"></div>

WINTER



Special pattern design with high density sawtooth lateral groove, make sure excellent grip and brake performance on snow or ice covered road.



Wider pattern design on inner side of shoulder to achieve better traction on snow road.



With hundreds of tiny grooves on the tread, fabulous ability to absorb water to refrain aquaplaning.



Brand new 3D pattern designing, 20% more space inside of the groove, enhanced mutual support between pattern blocks, better grip performance.

SIZE	Load Index	Speed Rating	Standard Rim	Section Width (mm)	Overall Diameter (mm)	Max.load		Max.pressure		Tread Depth (mm)
						kg	lbs	kpa	psi	
★ 205/65R16	95	T	6.0J	209	672	690	1521	300	44	8.5
225/55R16	95	T	7J	233	654	690	1521	300	44	8.5
225/55R17	97	H	7J	233	680	730	1609	300	44	8.5
215/50R17	95	H	7J	226	684	690	1521	340	49	8.5
225/45R17	94	H	7.5J	225	634	670	1477	340	49	8.5
215/55R17	94	T	7J	226	668	670	1477	300	44	8.5
225/50R17	94	T	7J	233	658	670	1477	300	44	8.5
235/45R17	97	S	8J	236	644	730	1609	340	49	8.5
235/55R17	99	S	7.5J	245	690	775	1708	300	44	8.5
205/50R17	93	H	6.5J	214	638	650	1433	340	49	8.5
215/45R17	91	H	7.0J	213	626	615	1356	340	49	8.5
★ 205/55R17	95	T	6.5J	214	658	690	1521	340	49	8.5
★ 225/40R18	92	H	8.0J	230	637	630	1389	340	49	8.5
★ 215/50R18	92	T	7.0J	226	673	630	1389	300	44	8.5
★ 255/45R18	103	T	8.5J	255	713	875	1929	340	49	8.5
235/55R18	100	H	7.5J	245	715	800	1764	300	44	8.5
215/55R18	99	H	7J	226	693	775	1708	340	49	8.5
235/45R18	98	T	8J	236	669	750	1653	340	49	8.5
235/50R18	101	H	7.5J	245	693	825	1819	340	49	8.5
245/45R18	96	S	8J	243	677	710	1565	300	44	8.5
255/40R18	99	S	9J	260	661	775	1709	340	49	8.5
245/50R18	104	H	7.5J	253	703	900	1984	340	49	8.5
225/45R18	95	H	7.5J	225	659	690	1521	340	49	8.5
225/50R18	99	H	7J	233	683	775	1709	340	49	8.5
245/40R18	97	H	8.5J	248	653	730	1609	340	49	8.5

★ : under development

WINTER



# IS69

WINTER TYRE

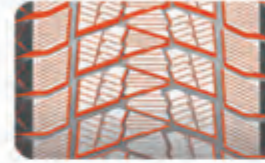
	Comfort	<div style="width: 100%;"></div>
	High Mileage	<div style="width: 100%;"></div>
	Fuel Saving	<div style="width: 100%;"></div>
	Winter	<div style="width: 100%;"></div>
	Silence	<div style="width: 100%;"></div>
	Wet Traction	<div style="width: 100%;"></div>

WINTER

WINTER



Multiple combination of pattern groove designing, enhance grip ability, safeguard the driving in winter.



Special pattern design with high density sawtooth lateral groove, make sure excellent grip and brake performance on snow or ice covered road.



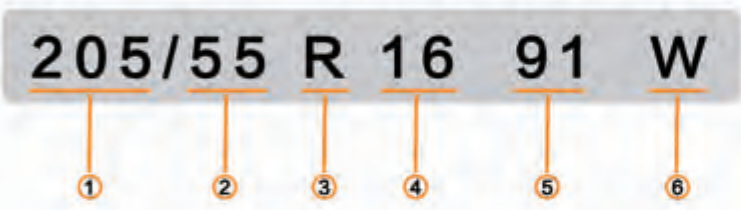
Brand new 3D pattern designing, 20% more space inside of the groove, enhanced mutual support between pattern blocks, better grip performance.

SIZE	Load Index	Speed Rating	Standard Rim	Section Width (mm)	Overall Diameter (mm)	Max. load		Max. pressure		Tread Depth (mm)
						kg	lbs	kpa	psi	
★ 265/70R16	112	T	8.0J	225	685	710	1565	340	49	10.5
215/65R16	98	S	6.5J	221	686	750	1653	300	44	10
235/70R16	106	S	7J	240	736	950	2094	300	44	10.5
225/60R17	99	S	6.5J	228	702	775	1709	300	44	10
235/65R17	104	T	7J	240	738	900	1984	300	44	10
245/65R17	107	S	7J	248	750	975	2149	300	44	10.5
215/65R17	99	T	6.5J	221	712	775	1709	300	44	10
225/55R18	98	S	7J	233	705	750	1653	300	44	10
225/60R18	100	S	6.5J	228	727	800	1764	300	44	10
245/60R18	105	T	7J	248	751	925	2039	300	44	10.5
265/60R18	110	R	8J	272	775	1060	2337	300	44	10.5
235/65R18	106	T	7J	240	763	950	2094	300	44	10.5
★ 255/60R18	112	T	7.5J	260	763	1120	2469	340	49	10.5
★ 225/45R19	96	T	7.5J	225	685	710	1565	340	49	10.5
225/55R19	99	T	7J	233	731	775	1709	300	44	10
245/55R19	103	R	7.5J	253	753	875	1929	300	44	10.5
235/50R19	99	T	7.5J	245	719	775	1708	300	44	10
245/45R19	102	T	8J	243	703	850	1874	340	49	10.5
255/55R19	107	T	8J	265	763	975	2150	300	44	10.5
255/45R19	100	T	8.5J	255	713	800	1764	300	44	10.5
275/40R19	105	T	9.5J	278	703	925	2039	340	49	10.5
265/50R19	110	T	8.5J	277	749	1060	2337	340	49	10.5
235/55R19	101	T	7.5J	245	741	825	1819	300	44	10.5
255/40R19	100	T	9J	260	687	800	1764	340	49	10.5
275/45R20	106	S	9J	273	756	950	2094	300	44	10.5
235/55R20	102	T	7.5J	245	766	850	1874	300	44	10
245/50R20	102	T	7.5J	253	754	850	1874	300	44	10.5
255/50R20	109	S	8J	265	764	1030	2271	340	49	10.5
275/55R20	117	S	8.5J	284	810	1285	2833	340	49	10.5
285/50R20	112	S	9J	297	794	1120	2469	300	44	10.5
245/45R20	103	T	8J	243	728	875	1929	340	49	10.5
275/45R21	110	T	9J	273	781	1060	2337	340	49	10
255/45R21	105	T	8.5J	255	763	925	2039	340	49	10.5
275/40R22	107	T	9.5J	278	779	975	2149	340	49	10.5

★ : under development



**TYRE SIZE KNOWLEDGE**

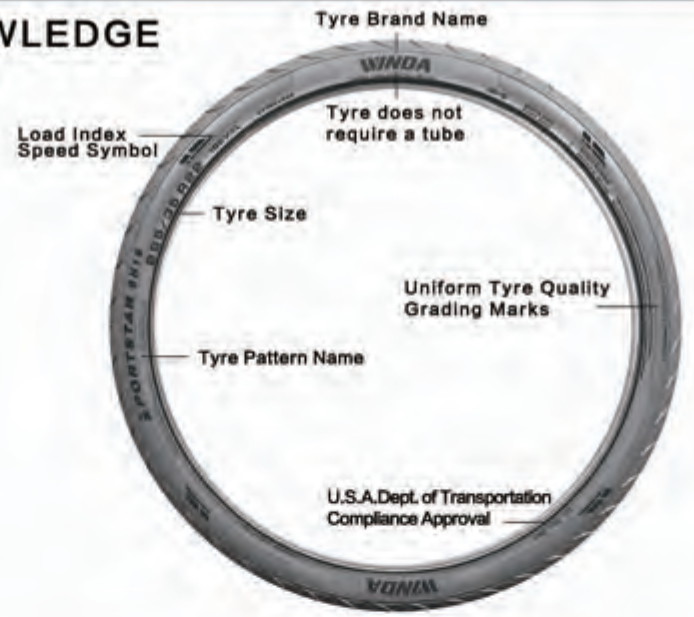


- ① Nominal Section Width (mm)
- ② Nominal Aspect Ratio as a Percentage
- ③ Radial Construction
- ④ Nominal Rim Diameter in Inches
- ⑤ Load Index
- ⑥ Speed Symbol

Aspect ratio(%) =  $\frac{\text{Section Height}}{\text{Section Width}} \times 100$



**SIDEWALL KNOWLEDGE**



**SPEED RATING**

Speed Rating	Max.Kph
M	130KM/H
N	140KM/H
P	150KM/H
S	180KM/H
T	190KM/H

Speed Rating	Max.Kph
H	210KM/H
V	240KM/H
W	270KM/H
Y	300KM/H
Z	240KM/H+

**TYRE UPGRADE**

Tyre Upgrade means:increase of rim diameter without changing of tyre overall diameter,the trend in development of low aspect ratio is called upgrade



Please refer to the clarifications set forth below to upgrade the tyre:

Without any particular reason,please do not change the overall diameterof tyre easily. The alternation of tyre overall diameter will cause misreading of speedometer or mutual interference between tyre and other parts of vehicle. Please determine the width of tyre in accordance with the specific width of vehicle.If the width of the entyre tyre is increased overly ,it will cause mutual interference between tyre and other parts of vehicle,even heading out of the tyre from bodywork which will initiate danger. Notice the load index of vehicle when you upgrade the tyre. there is rule to the weight which the tyre bear (load index) for each size. Please refer to the load index when you chose the proper size.

**TYRE ROTATION**

The purpose for rotating tyres is to achieve a more uniform wear for all tyres on a vehicle.Before rotating tyres,determine the cause of any unusual wear and correct any misalignment,imbalance,orother mechanical problems. Otherwise it will cause:1.Ride disturbing; 2.More noise; 3.Poor ride comfort; 4.Shorter of life span.

