

Tyre Accessories & Tooling



RIMEX

RIMEX

TYRE ACCESSORIES & TOOLING

For more information about RIMEX products and services:

visit: www.RIMEX.com

email: inquiries@RIMEX.com

RIMEX Supply Ltd. assumes no responsibility for the accuracy of the information presented in this guide, which is subject to change without notice and should not be considered a commitment by RIMEX Supply Ltd.

Trademarks are the property of their respective owners.

Copyright RIMEX Supply Ltd. 2019.

All rights reserved.

THE RIMEX STORY

RIMEX is a world leader in the custom manufacture of off-road wheel and rim assemblies, with primary markets in mining, forestry, agriculture and industrial equipment.

In 2016, RIMEX celebrated 40 years of dedication and innovation. By focusing on the requirements and requests of its customers, RIMEX has become the globally preferred choice for industrial wheels and rims. To guarantee performance for tomorrow, RIMEX is collaborating with leading tyre manufacturers in testing and perfecting future wheel and rim designs for the next generation.

But RIMEX is much more than just a wheels-and-rims enterprise. In addition to a growing range of tyre accessories, tooling and equipment, a key area the company now dominates is tyre pressure and temperature monitoring, with TyreSense, the best-of-class technology that protects and preserves a safe, stable internal wheel environment. But the TyreSense system provides more than just monitoring; it optimizes the extensive information and data it generates to provide clients with the potential for advanced asset management.

RIMEX has a heavy emphasis on compliance and quality and is committed to providing products and services that meet or exceed all customer requirements and relevant standards.

Today, RIMEX flourishes with a truly global footprint and a family of over 450 employees. Looking ahead, the road is wide open for more innovation and achievement as RIMEX roars into the future.



CAN'T FIND WHAT YOU'RE LOOKING FOR? CONTACT YOUR LOCAL RIMEX EXPERT.



RIMEX QUALITY STATEMENT

At RIMEX, we are committed to providing the highest quality products and services in our industry, ranging from superior wheels, rims and accessories, to innovative technological and service solutions that meet or exceed our customers' requirements. Quality is at the heart of RIMEX's Corporate Business Principles, which are embraced by all our personnel in responding to industry challenges, solving customers' needs and delivering unparalleled products and services. RIMEX strives to achieve these objectives by the following means:

- **Quality Management System:** RIMEX employs a management system that is collaborative, transparent and timely. Knowledge and expertise are shared across the organization to produce the best possible outcomes, and to continually improve our company.
- **Customer Orientation:** At RIMEX, we put our customers at the beginning and end of our value streams, seeking their initial input, responding to their operational requirements, and delivering the best possible solutions for their needs and challenges. We ensure high levels of customer satisfaction in order to maintain productive relationships and promote enduring commitments.
- **Training and Education:** RIMEX ensures the highest levels of employee knowledge, ability and creativity through ongoing upgrading, training and education. Our workforce will lead the way, not follow, into the future.
- **Leadership:** From our founder's original vision, RIMEX continues to strive for an environment that encourages teamwork, engagement and accountability. We are driven to succeed by focusing on the needs and desires of our customers, and by anticipating the demands of the marketplace.
- **Culture:** RIMEX fosters a corporate culture and positive work environment based on respect, integrity and continuous improvement. We actively promote the safety, well-being and fulfillment of our personnel, which, in turn, fosters global customer satisfaction and reputational excellence.

TYRE ACCESSORIES & TOOLING

Inflation Solutions 7

Tooling Solutions 53

Chemical Solutions 73

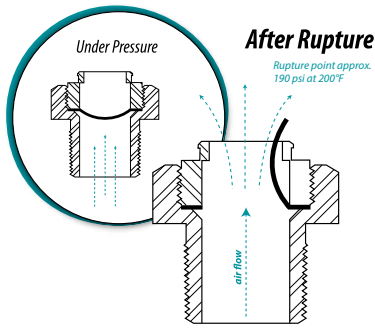
Engineered Solutions 77

INFLATION SOLUTIONS

Tyre Valve Systems	8
Large Bore Valve Systems	9
Super Large Bore Valve Systems	14
Z-Bore Valve Systems	19
Mega Bore Valve Systems	21
PT Valve Systems	24
O-Rings & L-Rings	25
Standard Bore Valves	26
Valve Extensions	28
High-Pressure Applications	30
Air/Liquid Valves	31
Liquid Fill	32
Valve Cores, Caps, Adapters	33
Grommets, Hexnuts, Washers	34
Tank Valves & Bead Seaters	35
Service Gauges	36
Digital & Dial Gauges	37
Gauges, Tread Depth Gauges	39
Service Tools	40
Large Bore Air Chucks	41
Standard Bore Air Chucks	42
Standard Bore Valve Tools	44
Inflation Gauges	45
Automatic Inflator Systems	49
OTR Tyre Deflation Tool	51

TYRE VALVE SYSTEMS

RIMEX DEFUZER VALVES



The unparalleled design, fabrication and testing standards of RIMEX DeFuzer Valves, make them the preferred choice for improving job site safety.

A DeFuzer Valve is a temperature sensitive pressure relief valve (190 psi, 93°C) designed to release potentially lethal air pressure build-up before extreme over-inflation or tyre fire situations can occur.

- ½" and ¾" DeFuzer Valves available
- DeFuzer Valves are easily installed in drilled NPT holes
- Designed for use on all off-highway tubeless wheels or rims 25" diameter or greater
- All 51 to 63" RIMEX wheels and rims are pre-drilled to accommodate a ¾" DeFuzer Valve
- RIMEX DeFuzer Valves are manufactured to the strict criteria of ASME Section 8 of the National Boiler and Pressure Vessel Inspector Standards
- Each DeFuzer Valve is stamped with a unique serial number, ensuring traceability and quality standards are met
- Custom fittings available, designed to fit any style of valve arrangement



SYSTEM COMPARISONS

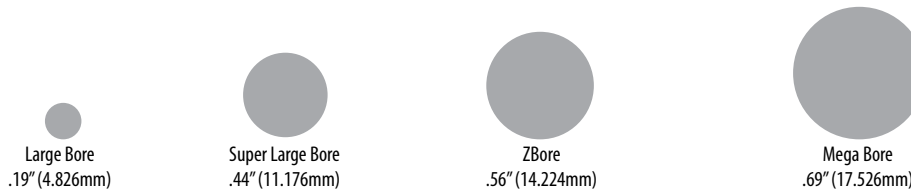
The chart below demonstrates the general characteristics of the four valve systems:

VALVE SYSTEM	FLOW RATE (CFM)	FITS VALVE HOLE	HOLE SIZE THREADED	SPECIAL INFLATOR NEEDED	RECOMMENDED FOR TIRE SIZES
LARGE BORE	22*	13/16"	1/2" NPT	—	11.25" - 29"
SUPER LARGE BORE	240	13/16"	1/2" NPT	HAL-IN-100/IN-95	20" up to 57"
ZBORE	370	13/16"	1/2" NPT	Z-12/IN-95	33" up to 57"
MEGA BORE	550	15/16"	3/4" NPT	MB-8/IN-95	45" up to 63"

*Flow rate is without valve core installed. With core, flow rate is 12 CFM. Flow rates on the Super Large Bore, Z-Bore and Mega Bore Valves were tested with a 750 CFM diesel-powered air compressor with the pressure held constant at 100 PSI.

FLOW DIAMETERS

Shown below is a cross-section of the different flow diameters on the four valve systems.



Increased flow rate saves inflation time. Super Large Bore inflation rate is more than three times faster than Large Bore.

LARGE BORE VALVE SYSTEMS

RIM SPUDS

HAL-H-41 TUBELESS SPUD

Fits 1 $\frac{3}{16}$ " rim hole. Used with all Large Bore (LB) Swivel valves



HAL-H-41



HAL-C-10

HAL-C-10 LARGE BORE SCREW-IN-SPUD

Screws into a 1/2" NPT tapped hole in the rim.
Can be replaced without dismounting tyre.

All valves equipped with core and hex cap.

On lengths over 152.4 mm,
2 lock nuts are furnished



HAL-WH-45-L

SINGLE BEND SWIVEL VALVES

PART NO.	TR NO.	BEND ANGLE	LENGTH MM	HEIGHT MM
HAL-N-1418	—	74°	44.5	27.4
HAL-WH-300-J-650	J-650	80°	79.4	27.4
HAL-WH-300-J-653	J-653	80°	63.5	27.4
HAL-WH-300-J-657	J-657	80°	101.6	27.4
HAL-WH-300-4 1/2	—	80°	114.3	27.4
HAL-WH-300-J-658	J-658	80°	139.7	27.4
HAL-WH-44-6	—	strt	152.4	—
HAL-WH-45-2 1/2	J-4000-2 1/2	90°	63.5	27.4
HAL-WH-45-4	J-4000-4	90°	101.6	27.4
HAL-WH-45-4 1/2	J-4000-4 1/2	90°	114.3	27.4
HAL-WH-45-5	J-4000-5	90°	127	27.4
HAL-WH-45-6	J4000-6	90°	152.4	27.4
HAL-WH-45-7 1/2	J-4000-7 1/2	90°	190.5	27.4
HAL-WH-45-8	J-4000-8	90°	203.2	27.4
HAL-WH-45-9	J-4000-9	90°	228.6	27.4
HAL-WH-45-10	J-4000-10	90°	254	27.4
HAL-WH-45-10 1/2	J-4000-10 1/2	90°	266.7	27.4
HAL-WH-45-12	J4000-12	90°	304.8	27.4
HAL-WH-45-24	J-4000-24	90°	609.6	27.4
HAL-WH-49-J-654	J-654	60°	79.4	27.4
HAL-WH-50-J-659	J-659	90°	88.9	50.4
HAL-WH-50-6	—	90°	152.4	50.4
HAL-WH-52-2	—	25°	50.8	27.4
HAL-WH-54-6	—	90°	152.4	60.8
HAL-WH-55-8 1/2	—	90°	216.2	60.8
HAL-WH-56.3	—	65°	76.2	27.4
HAL-WH-58-2 1/2	—	60°	63.5	54
HAL-WH-59-J-656	J-656	90°	93.7	66.7

DOUBLE BEND SWIVEL VALVES

PART NO.	BEND ANGLE	LENGTH MM	HEIGHT MM
HAL-WH-70-J-661	82°-8°	114.3	27.4
HAL-WH-70-J-664	90°-13°	222.3*	27.4
HAL-WH-70-J-667	90°-11°	190.5*	27.4
HAL-WH-72-J-28	70°-20°	711.2	27.4
HAL-WH-73-J-21 ¼	60°-30°	539.8	34.9

*Bent away from rim.



HAL-WH-70-J-664

TRIPLE BEND SWIVEL VALVES

PART NO.	BEND ANGLE	LENGTH MM	HEIGHT MM
HAL-WH-75-J-662	90°-20°-20°	355.6	27.4
HAL-WH-75-J-662-10 ½	90°-20°-20°	266.7	27.4
HAL-WH-75-J-663	90°-8°-8°	635	27.4
HAL-WH-75-J-665	90°-13°-13°	812.8	27.4



HAL-WH-75-J-662

SPECIAL HYDROFLATING VALVES

Designed for faster filling of tyres with liquid. Does not contain valve core. Straight-through 7.9 mm opening is sealed with special O-ring cap No HAL-A-151. Used on loader tyre in conjunction with similar LB Air Valve.

AIR WATER VALVES

Used in conjunction with HAL-WH-330-J-694

PART NO.	TR NO.	BEND ANGLE	LENGTH MM	CAP
HAL-WH-JF-994	JF-994	28°	88.9	A-151

LARGE RADIUS, HIGH BEND AIR VALVE USED WITH 9775

All valves fit 20.6 mm valve hole.

Uses HAL-A-145 valve core and HAL-A-149 cap.

PART NO.	BEND ANGLE	LENGTH MM	HEIGHT MM
HAL-1145-5 ½	90°	139.7	50.8
HAL-1145-11	90°	279.4	50.8

Can be ordered in any length.

LARGE RADIUS, HIGH BEND AIR LIQUID VALVE

Uses SLB HAL-T-81 spud (HAL-TR-SP-8) and HAL-A-151 cap.

PART NO.	BEND ANGLE	LENGTH MM	HEIGHT MM
HAL-9775-5 ½	90°	139.7	50.8
HAL-9775-11	90°	279.4	50.8

Can be ordered in any length.

TURRET VALVE FOR PLANETARY GEAR WHEELS

PART NO.	TR NO.	ANGLE BEND 1	OFFSET MM	LENGTH MM	ANGLE BEND 2
HAL-WH-330-J-690	J-690	28°	14.3	119.1	28°
HAL-WH-330-J-691*	J-691	18°	—	84.1	—
HAL-WH-330-J-691B*	J-691	18°	—	203.2	—
HAL-WH-330-J-692	J-692	28°	14.3	119.1	18°
HAL-WH-330-J-695	J-695	50°	25.4	104.8	50°
HAL-WH-330-J-696	J-696	42°	23	108	42°

*Single bend.



HAL-WH-JF-994



HAL-1145-L



HAL-9775-L



HAL-WH-330-J-691

DOUBLE SPUD VALVES

HAL-DS-400-LENGTH

This LB double spud valve eliminates most of the plugging of LB valves, which occurs at the bend of the swivel-type LB valve.



HAL-DS-400-LENGTH

HAL-WH-44 LENGTHS RIGID EXTENSION FOR DOUBLE SPUD

Can be ordered in any length.



HAL-WH-44

HAL-DS-385

For rims with valve hole counter-bore on O.D. of rim.



HAL-DS-385



HAL-DS-390



HAL-H-43

HAL-DS-390

For rims with 1/2" tapered pipe thread rim hole.

HAL-H-43

Double Spud plug

LOADER TYRE VALVE HAL-T-670

Loader tyre valve complete with core, hex cap, and O-ring seal. Thread size is 26.9 - 304.8 mm.

PART NO.	HEIGHT MM	CAP
HAL-T-670	45.4	HAL-A-149

TANK VALVE HAL-H-47

Screw-in type valve with 6.3 mm male pipe thread. Complete with core and cap.

PART NO.	TR NO.	HEIGHT MM
HAL-H-47	J-671	40.5
HAL-H-47L		53.3



HAL-T-670



HAL-H-47

STRAIGHT VALVES

HAL-H-41

Tubeless spud, used with all LB swivel valves. Fits 20.6 mm rim hole.



HAL-H-41

HAL-H-42

Straight valve, equipped with core and hex cap.

HAL-H-45

Spud and valve complete.

Consists of HAL-H-41 and HAL-H-42.

PART NO.	TR NO.	HEIGHT MM
HAL-H-41	SP-2	15.8
HAL-H-42	TRJ-670-2	38.1
HAL-H-45	TRJ-670-3	41.3



HAL-H-42



HAL-H-45

EXTENSIONS

HAND-BENDABLE

Equipped with 2 lock nuts and $\frac{3}{4}$ " hex sealing nut. A Teflon gasket seals on end of valve, the lead seal in the sealing nut is forced into the threads for a second seal, positively locking extension to valve. Cap and core not included. They should be removed from valve and transferred to extension. Should be anchored to rim.

Other lengths can be ordered.

PART NO.	HEIGHT MM
HAL-753S-3 ½	89.6
HAL-753S-4 ½	114.3
HAL-753S-8	203.2
HAL-753S-12	304.8
HAL-753S-16	406.4
HAL-753S-18	457.2



RIGID BRASS EXTENSION

All-brass extension used where mounted in straight line with valve. Full-length deflector pin opens core in valve when servicing. Equipped with hex cap and 2 lock nuts on extensions over 127 mm in length. Other lengths can be ordered.

PART NO.	LENGTH MM
HAL-867-3	76.2
HAL-867-4	101.6
HAL-867-6	152.5
HAL-867-8	203.2
HAL-867-10	254
HAL-867-12	304.8
HAL-867-16	406.4



FLEXIBLE EXTENSION

Equipped with 2 lock nuts and $\frac{3}{4}$ " hex sealing nut. A Teflon gasket seals on end of valve. The lead seal in the sealing nut is forced into the threads for a second seal, positively locking extension to valve. Cap and core are not included. They should be removed from valve and transferred to extension.

Other lengths can be ordered.

PART NO.	LENGTH MM
HAL-810F-8	203.2
HAL-810F-16	406.4
HAL-810F-17	431.8
HAL-810F-25	635

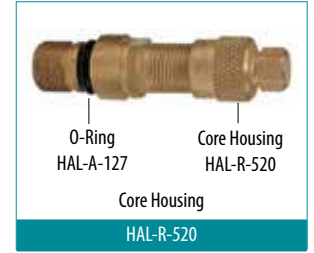


CUSTOM-BENT SWIVEL VALVES AND EXTENSIONS FOR CATERPILLAR [OE VALVES]



PART NO.	OVERALL LENGTH MM	NUMBER OF BENDS	TYPE	MACHINE
HAL-WHG-0526VC	420	4	Valve	
HAL-WHG-0570VC	507.2	5	Valve	
HAL-WHG-1450VC	835	5	Valve	
HAL-WHG-8018VC	679.4	4	Valve	
HAL-WHG-8019VC	203.2	1	Valve	
HAL-WHG-5112VC	720.7	4	Valve	
HAL-WHD-7940EC	482.6	5	Extension	
HAL-WHD-7949EC	733.4	4	Extension	
HAL-WHD-7948EC	523.8	4	Extension	
HAL-WHD-0585EC	455.6	4	Extension	
HAL-WHD-7103EC	412.7	4	Extension	
HAL-WHD-8262EC	723.9	6	Extension	

SUPER LARGE BORE VALVE SYSTEMS



COMPONENTS OF THE HALTEC SUPER LARGE BORE SYSTEM (SLB)

HAL-M-1950 complete swivel valve, including HAL-R-520 core housing and HAL-T-81 spud.
HAL-M-1900: Same as HAL-M-1950 but without HAL-T-81 spud.

CLAMP IN SPUDS

HAL-T-81 CLAMP-IN SPUD

Fits the 20.6 mm diameter valve hole. The HAL-T-81 spud (HAL-TR-SP8) can attach any SLB valve to the rim through a standard valve hole (20.6 mm diameter).

HAL-T-82 CLAMP-IN SPUD

Similar to the HAL-T-81 spud but with an effective length 6.3 mm longer.



SCREW-IN SPUDS 1/2" AND 3/4" NPT TAPPED HOLE

HAL-S-85 ANGLE SCREW-IN SPUD

Fits 1/2" NPT-tapped rim hole. 85° bend angle. Other angles available.



HAL-S-85-D ANGLE SCREW-IN SPUD

Furnished with a locking nut with a Teflon seal so direction can be reversed. 85° bend angle.



HAL-SLB-85 3/4" NPT SLB ANGLE SPUD

Screw-in spud, fits 3/4" NPT-tapped rim hole 85° bend.



HAL-C-100 / HAL-C-155 SCREW-IN SPUD

The screw-in spud is used to attach any of the SLB valves to the rim and is designed to screw into a 1/2" NPT-tapped rim hole. The spud can be changed without dismantling the tyre. HAL-C-100 has internal threads for core housing. HAL-C-155 has no internal thread.



HAL-C-134 3/4" NPT SCREW-IN SPUD

3/4" NPT Screw-in spud



SWIVEL ANGLE CONNECTOR

Component two of the SLB System is generally a swivel connector that screws on the spud.

The other end of the connector accommodates a HAL-MT-3000 flexible extension which attaches to the HAL-R-520 core housing.

PART NO.	BEND ANGLE
HAL-R-525	90°
HAL-R-685	85°
HAL-R-625	80°
HAL-R-675	75°
HAL-R-660	60°
HAL-R-529 5 1/4"	90°



HAL-R-525



HAL-R-660

HAL-MT-3000 FLEXIBLE EXTENSIONS



HAL-MT-3000



HAL-T-620 ASSEMBLY TOOL



HAL-SLBHAT ASSEMBLY TOOL

Flexible extensions are made up in any length to allow the extension to fit wheel configuration. The specially designed fittings and thermoplastic hose will not fatigue or crush during service. Corrosion problems are eliminated. Another important benefit of the Haltec SLB System is the ability to customize your extension in the field. The HAL-R-969-K and HAL-R969K-1 kits are available to field assemble your own flexible extensions with the HAL-T-620 Assembly Tool or the HAL-SLBHAT hydraulic tool.

ASSEMBLY KIT FOR SLB VALVES FIELD SERVICE



HAL-R-520



HAL-R-763



HAL-R-762S



HAL-B-222



HAL-R-764R

HAL-R-969K-1

Consists of HAL-R-762S swivel connector, HAL-R-763 straight tubing connector, HAL-R-764R (2) tubing connector sleeves, and HAL-B-222 nuts (2).

HAL-R-969-K

Consists of the above plus the HAL-R-520 core housing complete with core and cap.

CORE HOUSING OR CHECK VALVE

HAL-R-520 (HAL-TR-CH-8) CORE HOUSING COMPLETE WITH CORE AND HAL-A-149 CAP

The HAL-R-520 is removed from the valve assembly with the HAL-IN-100 adapter.

HAL-R-760

Extension Tubing—available in 50' and 100' lengths.



HAL-R-760

HAL-HT-R760 HIGH TEMP SLEEVE

High temp hose is used to protect HAL-R-760 in applications where temperatures are high enough to damage the HAL-R-760.

HAL-A-449 SLB PROTECTIVE CAP

Locks the HAL-R-520 in place and cannot be removed until the HAL-A-449 is removed. Adds extra security by keeping the HAL-R-520 core housing in place deterring the tyre from going flat.



HAL-A-449

HAL-TL-800 CORE HOUSING REPLACEMENT TOOL

Safely removes and replaces the HAL-R-520 core housing without losing pressure in the tyre. Brass ball valve made of corrosion-resistant brass.



HAL-TL-800

INFLATOR ADAPTER

HAL-IN-100 SLB INFLATOR ADAPTER

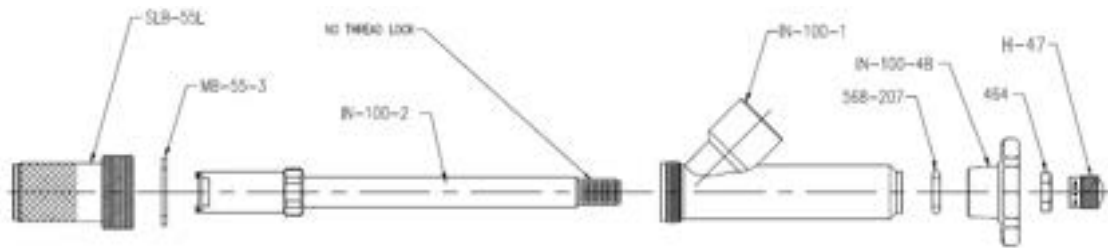
The Haltec design of the SLB inflator adaptor offers many advantages.

- New, safer alternative to HAL-IN-80A.
- Left hand threads on union body will not come loose when screwing on to valve.
- New non-removeable stem guide.
- 3/4" pipe thread for easy air hose connection. During inflation, air pressure in the tyre can be checked through the stem knob with a tyre pressure gauge.
- Will insert or extract HAL-CH-9 or HAL-CH-9 core housing.
- Pressure can be checked without disconnecting with a LB gauge.
- 1-piece stainless steel stem and collet
- Reduces inflation time 60%, deflation time 80%.
- The core housing is held in a stainless steel extractor by a snap ring.
- Extractor is rugged enough so that the core housing can be loosened or tightened without being damaged. The HAL-IN-100 inflator adapter saves time by fast inflation or deflation on a tyre. After removing the valve cap, the inflator is screwed onto the valve stem. The inflator stem is pushed in to engage the flats on the core housing. By rotating the stem counter clockwise, the core housing can be removed without any danger to the person removing it. The core housing is pulled up into the inflator body and held there during inflation or deflation. Can also be used for liquid-filling tyres equipped with SLB valves.



HAL-IN-100

HAL-IN-100 parts list:



- HAL-E-3100-2A Connector Sleeve
- HAL-IN-100-1A Body for HAL-100
- HAL-IN-3A Nut for Connector Sleeve
- HAL-10218 O-Ring
- HAL-G-202 Teflon Washer
- HAL-E-3100-12 Hand Knob
- HAL-E-3100-1A Stem and Collet
- HAL-464 Lock Nut
- HAL-A-147

HAL-B050121005 MUFFLER FOR HAL-IN-100

Muffles sound which protects the hearing of operator while deflating the tyre. 1/2" fitting attaches to the HAL-IN-100 inflator. Decibel rating between 17-25 DBA.



HAL-B050121005

RIGID METAL SWIVEL VALVES

HAL-MR-800 SWIVEL VALVE

HAL-MR-800-Length. Rigid metal swivel valve with HAL-R-520 core housing and (2) HAL-B-222 lock nuts. Can be ordered in different lengths.



HAL-MR-800

HAL-MR-850 SWIVEL VALVE

HAL-MR-850-Length. Same as HAL-MR-800 except with a HAL-T-81 rim spud.



HAL-MR-850

HAL-MR-890 TURRET VALVE

HAL-MR-890-Length. Rigid metal turret-type valve with HAL-R-520 core housing, HAL-B-222 lock nuts (3).



HAL-MR-890

HAL-M-2000 SWIVEL VALVE ASSEMBLY

A 90° swivel valve having 79.3 mm horizontal length.



HAL-M-2000

DOUBLE SPUD ASSEMBLY



HAL-DS-226



HAL-DS-215



HAL-DS-210P



HAL-DS-210



HAL-DS-296

HAL-DS-296 SLB DOUBLE SPUD VALVE ASSEMBLY (with flexible extension)

Designed for wheels where space is critical. Valve height above rim is only 22.2 mm. Consists of HAL-DS-210 double spud, HAL-DS-215 plug and HAL-MT-4000-length flexible extension.

HAL-MT-4000 LENGTH FLEXIBLE EXTENSION

Used with HAL-DS-296 and HAL-PB-210. Any length can be ordered. Consisting of: HAL-DS-226 connector, HAL-R-763 connector, HAL-R-764R sleeves (2), HAL-R-760 tubing.



HAL-MT-4000

SLB TURRET VALVES

PART NO.	LENGTH MM	BEND ANGLE	USED ON
HAL-N-1538A	200	15°	Caterpillar Applications
HAL-N-1543A	155.5	15°	Caterpillar Applications
HAL-JD-3	155.5	12°	John Deere Applications



HAL-N-1543A

HAL-N-1543A

155.5 mm long SLB turret valve with 15° bend, used on Caterpillar applications.

HAL-N-1066 SUPER LARGE BORE LOADER VALVE

Accepts HAL-R-520 core housing or other SLB swivel fittings. Thread size is 1 1/8"-12. SLB version of HAL-T-670.



HAL-N-1066



HAL-S-7910

HAL-S-7910 VALVE SUPPORT

Used for SLB.

SUPER LARGE BORE AIR-LIQUID VALVE FOR TRACTOR AND GRADER

HAL-M-5000 VALVE ASSEMBLY

Screw-in type spud with O-ring seal. HAL-R-521 core housings not interchangeable in other SLB spuds. Thread size is 3/4" - 16.



HAL-M-5000



HAL-M-1870

HAL-M-1870 VALVE ASSEMBLY

SLB straight valve assembly consists of HAL-R-520 core housing and HAL-T-81 spud. HAL-N-1050 valve assembly is the same as HAL-M-1870 but with HAL-T-82 spud.

HAL-H-50 (HAL-TR-F-910)

Straight Valve Assembly Components HAL-T-81 spud and HAL-R-372 core housing.



HAL-H-50



HAL-R-372

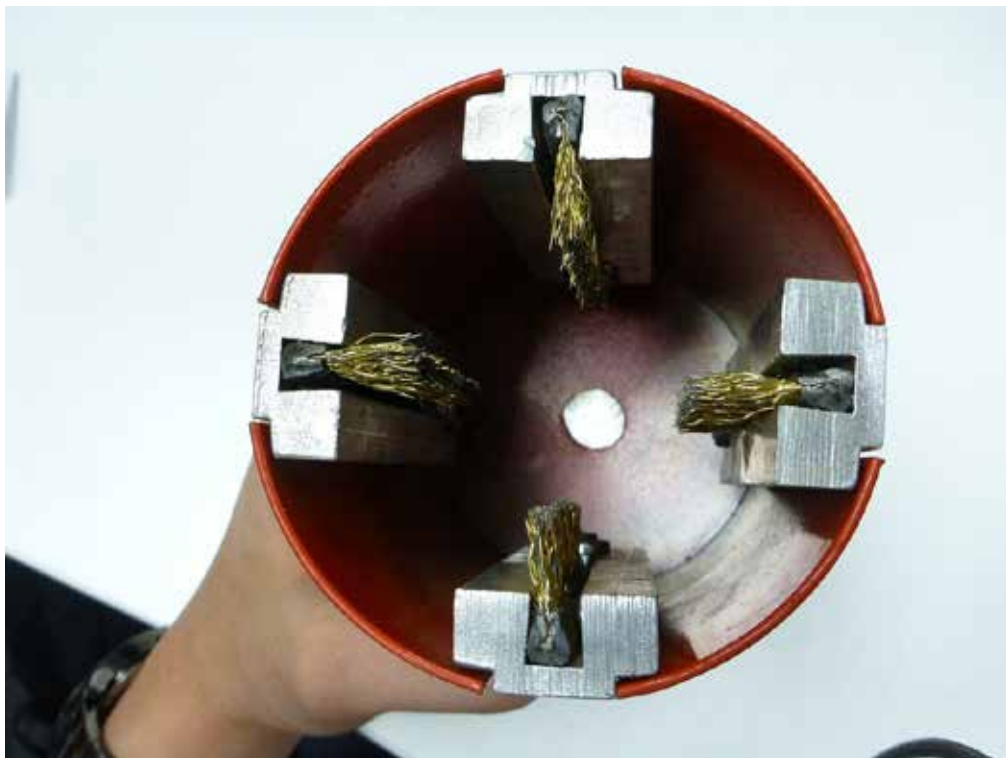
HAL-R-372 (HAL-CH-16)

Fits HAL-T-81, HAL-C-100 and HAL-SP816 tube spud.

NUT AND BOLT THREAD CLEANING KITS

Portable on-site thread cleaners provide a fast and efficient way to clean your studs before the nuts are removed using a 1/2" cordless, electric, or air powered drill.

PART NO.	DESCRIPTION
HAL-38050	Includes a 1" and 1 1/2" thread cleaner in case
HAL-38051	1" thread cleaner in case
HAL-38052	1 1/2" thread cleaner in case
HAL-38053	1 replacement brush



Z-BORE VALVE SYSTEMS



Angle Connector
HAL-Z3-90



HAL-Z100
Flexible Extension
HAL-ZBFE-L



Core Housing
HAL-Z10



Rim Spud
HAL-Z2

COMPONENTS OF THE HALTEC Z-BORE (ZB) SYSTEM

RIM SPUDS

HAL-Z2 CLAMP-IN SPUD

Fits the 1³/₁₆" diameter valve hole. The HAL-Z-2 spud can attach any ZB valve to the rim through a standard valve hole (1³/₁₆"). Tyre must be dismounted to change spud.



HAL-Z2

HAL-Z1 SCREW-IN SPUD

The screw-in spud is used to attach any of the "tapped" valves to the rim and is designed to screw into a 1/2" NPT-tapped hole. The spud can be changed without demounting the tyre.



HAL-Z1

HAL-Z13 SCREW-IN SPUD

The HAL-Z13 screw-in spud screws into the 3/4" NPT-tapped rim hole and converts MB to ZB.



HAL-Z13

HAL-Z4 ANGLE SCREW-IN SPUD

Fits 1/2" NPT-tapped rim hole. 85° bend angle.



HAL-Z4

ANGLE CONNECTORS

The connector accommodates a flexible extension which attaches to the HAL-Z-10 core housing.

PART NO.	ANGLE
HAL-Z3-60	60°
HAL-Z3-75	75°
HAL-Z3-80	80°
HAL-Z3-90	90°



HAL-Z3-90

FLEXIBLE EXTENSION

The ZB flexible extension can be made in various lengths.

Flexible extensions are made in any length to allow the extension to fit the wheel configurations. The specially designed fittings and thermoplastic hose will not fatigue or crush during service. Corrosion problems are eliminated. Another important benefit of the ZB System is the ability to customize your extension in the field. The HAL-ZFAK field assembly kit is available to field assemble your own flexible extension with the HAL-Z5 assembly tool.



HAL-ZBFE-L

KOMATSU EXTENSIONS

KOMATSU NO.	PART NO.	NOTES
PC0664	HAL-ZBC-0664	Old Style
PC0581	HAL-ZBF-0581	
PC0663	HAL-ZBF-0663	
PC1480	HAL-ZBR-1480	New Style

HAL-ZFAK - ASSEMBLY KIT FOR Z-BORE VALVES

HAL-ZFAK consists of HAL-Z8 Swivel connector, HAL-Z17 straight tubing connector, two HAL-Z2-2 nuts, two HAL-Z9 tubing connector sleeves and HAL-Z10 core housing. HAL-Z-100 tubing is ordered separately.



HAL-Z-100

Extension Tubing—available in 100' lengths.



CORE HOUSING

HAL-Z10 CORE HOUSING

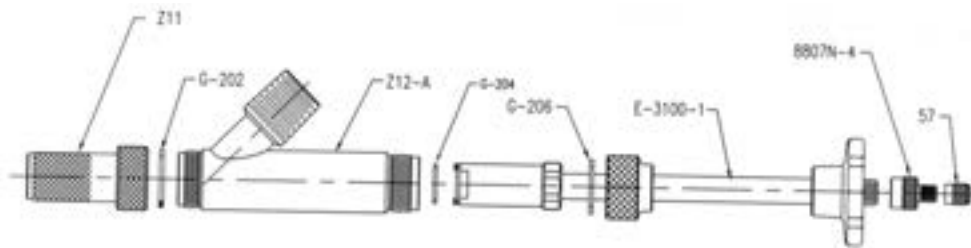
Complete with Core and Cap, the HAL-Z10 is an integral part of the system as the HAL-Z10 is removed from the valve assembly with the HAL-Z12-B Inflator to utilize the larger opening and the fullest flow.

INFLATOR

HAL-Z12-B INFLATOR ADAPTER

To maximize air flow, a HAL-Z12-B inflator is used to remove the core housing during inflation and deflation. This inflator operates like the HAL-IN-100 SLB inflator as seen on page 16.

HAL-Z12-B parts list:



- HAL-Z55 Ejector Union
- HAL-G-202 Gasket for HAL-Z11
- HAL-MB-60P Gasket for HAL-Z55
- HAL-G-204 Snap Ring for Collet
- HAL-E-3100-1 Stem and Collet
- HAL-G-206 Gasket for Stem Nut
- HAL-8807N-4 Cap Adapter
- HAL-57TT Standard Bore Cap



HAL-Z12-B

HAL-B070121007 MUFFLER FOR HAL-Z12-B

Muffles sound which protects the hearing of operator while deflating the tyre. $\frac{3}{4}$ " fitting attaches to the HAL-Z12-B inflator. Decibel rating between 17-25 DBA.



HAL-B070121007

MEGA BORE VALVE SYSTEMS



COMPONENTS OF THE MEGA BORE (MB) VALVE SYSTEM

RIM SPUDS

HAL-MB-20 CLAMP-IN SPUD

Fits a 23.8 mm diameter valve hole. Tyre must be dismantled to change spud. Attach any MB angle connector to the HAL-MB-20 spud.

HAL-MB-26 SCREW-IN SPUD

Fits a 3/4" NPT threaded valve hole, screw-in spud. Attach any MB angle connector to the HAL-MB-26 spud. Spud can be changed without demounting tyre.

HAL-MB-12-85 AND HAL-MB-12-75 SCREW-IN ANGLE SPUD

The screw-in spud is used on a 3/4" tapped rim hole. Attaches to a HAL-MB-14 rigid or a HAL-FMB flexible MB valve. The spud can be changed without demounting the tyre.

ANGLE CONNECTORS

HAL-MB-19-85 AND HAL-MB-19-75 ANGLE CONNECTORS

An angle connector screws onto the HAL-MB-20 spud. The other end of the connector accommodates a HAL-MB-14 rigid valve or a HAL-FMB flexible MB valve.

HAL-MB-29-85 ANGLE CONNECTORS

An angle connector screws onto the HAL-MB-20 spud. The other end of the connector accommodates a HAL-MB-27 rigid valve or Caterpillar O-ring face seal hydraulic hose.



VALVES

HAL-MB-14 RIGID MB VALVE

Rigid MB valve can be screwed into any MB angle connector or screw-in spud.



HAL-MB-14

HAL-MB-27 FACE SEAL MB VALVE

Rigid MB valve can be screwed onto HAL-MB-29 angle connector or Caterpillar O-ring face seal hydraulic fittings.



HAL-MB-27

HAL-FMB LENGTH MB FLEXIBLE VALVE

Screws into the MB angle connectors or screw-in angle spud. Can be made in any length (minimum 203.2 mm). The specially designed fittings and thermoplastic hose will not crush or fatigue during service. LB threads on the core housing allow use of LB pressure gauges.



HAL-FMB-L

HAL-MBV-L

Screws into the MB angle connectors or screw-in angle spud. Made to length in the field using the HAL-MBAT assembly tool. HAL-MB-14 screws into the end to complete the valve.



HAL-MBV-L

CAPS

HAL-MB-25 HEX CAP

Cap for the MB core housing. Protects core housing from damage. Has an O-ring seal. Has modified Hex that can be installed or removed using the HAL-TL-700.



HAL-MB-25

HAL-MB-13 VALVE CAP

Cap for the MB core housing. Protects core housing from damage. Has an O-ring seal.



HAL-MB-13

INFLATOR

HAL-MB-8 INFLATOR

The HAL-MB-8 MB inflator attaches to the valve body by turning the knurled nut on the inflator in a clockwise direction. The $\frac{3}{4}$ " ball valve is used to open and close the air flow after the core housing is retracted with the HAL-TL-700.



HAL-MB-8

HAL-TL-700 TOOL

The HAL-TL-700 fits the MB core housing to retract the housing for inflation and deflation. The HAL-TL-700 should be used only in conjunction with the HAL-MB-8 MB inflator. The HAL-MB-8 inflator should be engaged on the core housing before using the HAL-TL-700.



HAL-TL-700

HAL-MBRC-8 MB VALVE REMOVABLE CORE HOUSING 8"

MB flexible valve with removable core housing. Can be made in any length (minimum 203.2 mm). Can be assembled in field.



HAL-MBRC-8

HAL-MB-56 RIGID MB VALVE

Rigid MB valve can be screwed into any MB angle connector or screw-in spud. With removable core housing.



HAL-MB-56

COMPONENTS FOR MEGA BORE FLEXIBLE VALVE FIELD ASSEMBLY



HAL-MB-50



HAL-MB-51



HAL-MB-5A



HAL-R-761



HAL-MB-20-2



HAL-MB-3



HAL-MBAT Assembly Tool

INFLATOR ADAPTOR

HAL-IN-95 INFLATOR ADAPTER

HAL-IN-95 Inflator Adapter for Air or Liquid filling of Large Earthmover Tyres when equipped with SLB, ZB, and MB Valves.

The HAL-IN-95 will insert or extract an HAL-R-372, HAL-R-520, HAL-Z10, or an HAL-MB-50 core housing and positively hold it up in the adapter body out of the air or liquid flow when filling or evacuating a tyre. The inflator adapter can be attached to any liquid filling tyre pump since it has 3/4" pipe thread. With the adapter attached to the valve, the pressure in the tyre can be checked without disconnecting it from the valve, with a large bore gauge, through the end of the adapter stem. All HAL-IN-95 parts are brass except the collet, which is stainless steel and the hand knob, which is aluminum.



HAL-IN-95



HAL-MB-55



HAL-SLB-55



HAL-Z55

IN-95 parts list:

- HAL-SLB-55 SLB Ejector Union
- HAL-Z55 Z- Bore Ejector Union
- HAL-MB-55 MB Ejector Union
- HAL-MB-55-3 Gasket Ejector Unions
- HAL-MB-60-1 Adapter Body
- HAL-E-3100-1 Stem and Collet
- HAL-G-204 Snap Ring
- HAL-G-206 Gasket for Stem Nut
- HAL-A-147 Dome Cap

HAL-B070121007 MUFFLER FOR HAL-IN-95

Muffles sound which protects the hearing of operator while deflating the tyre. 3/4" fitting attaches to the HAL-IN-95 inflator. Decibel rating between 17-25 DBA.



HAL-B070121007

PT VALVE SYSTEMS

PT GAUGE

The PT Valve System is a design that allows tyre pressure to be monitored with an easy-to-read, liquid filled, dial gauge attached to the valve. PT gauge is ordered separately. Comes with gauge and nut. Calibrated 0-160 PSI.

The PT valve and gauge can be used on most LB, SL and ZB applications.

This gauge mounts on specially designed PT-style valves which allow visual tyre pressure checks yet also allows for inflation, deflation and manual pressure checks without removing the gauge.

The PT gauge has an all-anodized aluminum body and is completely sealed to prevent moisture from fogging the glow-in-the-dark dial.



HAL-PT-GAUGE



HAL-PTC

PTC BLOCK-OFF COLLAR

When the gauge is not being used, a PTC block-off collar can be installed to prevent air leakage. 15.8 mm hex.



HAL-PT-R-520

HAL-PT-R-520

All PT valves have trouble-free, urethane O-rings on the valve barrel. For Super Large Bore applications, order the HAL-PT-R-520 core housing. Compatible for use with the HAL-IN-100.

HAL-PT-EX

Large Bore extension with 42.2 mm effective length to allow HAL-PT Gauge installation on existing valves.



HAL-PT-EX

HAL-PT-EX-DP

Same as above, but comes equipped with internal deflector pin, therefore the core does not need to be moved from the valve.

PT VALVE SYSTEM

PART NO.	DESCRIPTION	CAP
HAL-PT GAUGE	Gauge 0-160 PSI	—
HAL-PTC	Block-off collar for PT valves	—
HAL-PT-300-J-650	HAL-WH-300-J-650 with PT grooves and O-rings	HAL-A-150
HAL-PT-45-6	HAL-WH-45-6 with PT grooves and O-rings	HAL-A-150
HAL-PT-330-J-690	HAL-WH-330-J690 with PT grooves and O-rings	HAL-A-150
HAL-PT-H-42	HAL-H-42 with PT grooves and O-rings	HAL-A-150
HAL-PT-753S-6	HAL-753S-6 with PT grooves and O-rings	HAL-A-150
HAL-PT-R-520	HAL-R-520 with PT grooves and O-rings	HAL-A-150



HAL-PT-45-6

The PT valve hole allows the gauge to provide continuous pressure readings.

HAL-TL-634

Tightens nut to hold PT gauge on valve assembly. Also tightens A-150 cap and PTC collar.



HAL-TL-634

HAL-PT-Z10 ZB CORE HOUSING

All PT valves have trouble-free, urethane O-rings on the valve barrel. For ZB applications, order the HAL-PT-Z10 core housing. Compatible for use with the HAL-IN-95A.



HAL-PT-Z10

O-RINGS & L-RINGS

STANDARD AND HIGH TEMP O-RINGS FOR TUBELESS RIMS

PART NO.	RIM SIZE	ROD DIAMETER
HAL-OR-21-T	21"	.26
HAL-OR-25-T	25"	
HAL-OR-20-JM	20"	
HAL-OR-22-JM	22"	
HAL-OR-24-JM	24"	.28
HAL-OR-215-H	15"	
HAL-OR-217-L	17"	
HAL-OR-220-TG	20"	
HAL-OR-224-TG	24"	.26
HAL-OR-225-T	25"	
HAL-OR-321-T	21"	.385
HAL-OR-325-T	25"	
HAL-OR-329-T	29"	
HAL-OR-333-T	33"	
HAL-OR-335-T	35"	
HAL-OR-339-T	39"	
HAL-OR-343-T	43"	
HAL-OR-345-T	45"	
HAL-OR-349-T	49"	
HAL-OR-445-T	45"	
HAL-OR-449-T	49"	.50
HAL-OR-451-T	51"	
HAL-OR-451-OVM	51"	
HAL-OR-457-T	57"	
HAL-OR-457-OVM	57"	
HAL-OR-463-T	63"	
HAL-OR-463-OVM	63"	
HAL-OR-469-T	69"	

- Packaged 2 per poly bag
- 24 O-rings per case
- Sold in case lots
- Consistent product quality
- Manufactured of high-quality material
- O-rings individually marked in an easy-to-read color
- Manufactured to major OEM specifications
- Spliced O-ring with sonic weld technology
- Extruded product allows diameter variation to meet the wide variety of rim O-ring grooves, both domestic and foreign
- Two compounds for all service conditions:
Standard -40°C to 82°C (marked with white ink)
High Temp -65°C to 82°C (all orange)
- High temperature silicone O-rings available upon request



L-RING SEALS FOR EARTHMOVER RIMS

The primary purpose of the L-ring seal is to create an air seal where the tyre bead and rim bead seat are not completely compatible. Some of the examples where the L-seal will prove useful:

PART NO.	DESCRIPTION	PART NO.	DESCRIPTION
HAL-LR-10	10" L-Ring Seal	HAL-LR-35	35" L-Ring Seal
HAL-LR-12	12" L-Ring Seal	HAL-LR-39	39" L-Ring Seal
HAL-LR-15	15" L-Ring Seal	HAL-LR-45	45" L-Ring Seal
HAL-LR-16	16" L-Ring Seal	HAL-LR-49	49" L-Ring Seal
HAL-LR-20	20" L-Ring Seal	HAL-LR-51	51" L-Ring Seal
HAL-LR-24	24" L-Ring Seal	HAL-LR-57	57" L-Ring Seal
HAL-LR-25	25" L-Ring Seal	HAL-LR-63	63" L-Ring Seal
HAL-LR-29	29" L-Ring Seal	HAL-LR-69	69" L-Ring Seal
HAL-LR-33	33" L-Ring Seal		

IMPORTANT INFORMATION

- L-Ring Seals are not a cure for damaged beads nor damaged wheels and rims. Caution should be used during all fittings. Do not install where broken bead is suspected.
- Always follow the respective manufacturers' recommendation for proper bead-lubrication and initial air pressure to properly seat beads.

STANDARD BORE VALVES

TRUCK AND BUS VALVES

Straight clamp-in valves used on both demountable and non-demountable rims. For 15.8 mm diameter valve hole. Bent valve stems also available. Haltec custom bends the HAL-TV-570 series valves.

PART NO.	TR NO.	EFFECTIVE LENGTH MM
HAL-TV-501	501	38.1
HAL-TV-570	570	79.4
HAL-TV-571	571	85.7
HAL-TV-572	572	95.2
HAL-TV-573	573	111.1
HAL-TV-575	575	28.6



EINKY VALVES

A performance "No Show" type chrome-plated valve that installs from the outside. A rubber washer and nut are on the inside.

PART NO.	BEND ANGLE	EFFECTIVE LENGTH MM	VALVE HOLE
HAL-TV-6010	STR.	19	.453
HAL-TV-6020	45°	—	.453
HAL-TV-6030	STR.	31.7	.453
HAL-TV-6040	STR.	44.4	.453
HAL-TV-6050	90°	66.6	.453



CLAMP-IN VALVE

Used on car and light truck applications. Maximum inflation pressure 130 PSI.

PART NO.	TR NO.	EFFECTIVE LENGTH MM	VALVE HOLE
HAL-TV-416	416	31.7	.453 OR .625
HAL-TV-416L	—	50.8	both grommets furnished



DOUBLE BEND VALVES

For tubeless truck and bus tyres. Extra-low vertical height clamp-in type. Fits .625" valve hole.

PART NO.	TR NO.	EFFECTIVE LENGTH MM
HAL-TV-513	513	66.6
HAL-TV-515	515	82.5



SNAP-IN TYRE VALVE AND CHROME SLEEVE TYRE VALVES

PART NO.	TR NO.	EFFECTIVE LENGTH MM	VALVE HOLE
HAL-TV-412	412	22.2	.453
HAL-TV-413	413	31.7	.453
HAL-TV-414	414	38.1	.453
HAL-TV-415	415	31.7	.625
HAL-TV-418	418	50.8	.453



METRIC RIM HOLE VALVE (9.7 MM VALVE HOLE)

Some imported trucks will have steel wheels that incorporate the 9.7 mm valve hole. These are the most popular valves for this application.

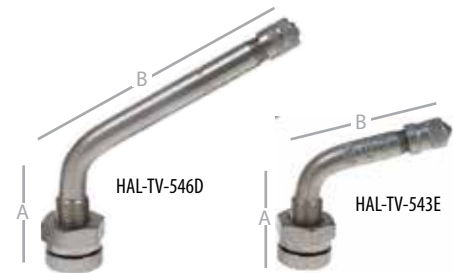
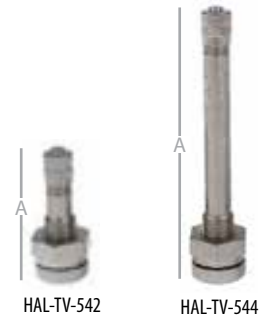
PART NO.	ETRTO	BEND	A HEIGHT MM	B HEIGHT MM
HAL-70 MS-27	V3-20-5	27°	46	39.6
HAL-80 MS-27	V3-20-7	27°	46	50.8
HAL-90 MS-27	V3-20-4	27°	46	60.3
HAL-115 MS-27	V3-20-6	27°	46	85.7
HAL-41 MS-00	V3-20-1	STR	46	—

Other sizes available upon request



HAL-TV-540 SERIES, O-RING SEAL VALVES FOR ALUMINUM TRUCK WHEELS (9.7 MM VALVE HOLE)

PART NO.	VALVE TR NO.	A HEIGHT MM	BEND ANGLE	B LENGTH MM	HEX NUT
HAL-TV-542	542	31.7	—	—	HAL-HN-22
HAL-TV-543	543	60.9	—	—	HAL-HN-22
HAL-H-543C	543C	23.6	45°	36.3	HAL-HN-22
HAL-TV-543D	543D	24.8	60°	35	HAL-HN-22
HAL-TV-543E	543E	24.8	75°	35	HAL-HN-22
HAL-TV-544	544	73.6	—	—	HAL-HN-22
HAL-TV-544C	544C	24.8	45°	1.94	HAL-HN-22
HAL-TV-544D	544D	24.8	60°	1.94	HAL-HN-22
HAL-TV-545	545	88.9	—	—	HAL-HN-22
HAL-TV-545D	545D	24.8	60°	2.6	HAL-HN-22
HAL-TV-545E	545E	24.8	75°	2.6	HAL-HN-22
HAL-TV-546	546	107.9	—	—	HAL-HN-22
HAL-TV-546D	546D	24.8	60°	3.35	HAL-HN-22
HAL-TV-546E	546E	24.8	75°	3.35	HAL-HN-22
HAL-TV-546G	546G	24.8	105°	3.35	HAL-HN-22
HAL-TV-546-36	546-36	24.8	36°	3.35	HAL-HN-22
HAL-TV-547D	547D	24.8	60°	3.78	HAL-HN-22



HAL-TV-550 SERIES

Features:

- Longer sealing life
- Greater corrosion resistance
- Larger sealing surface
- Slot and external hex for easier installation
- EPDM replacement grommet: HAL-G-551
- Grommet has better tear resistance
- Grommet must be used on HAL-TV-550 Series only, not for use on HAL-540 valve series



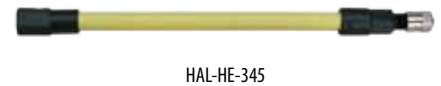
GROMMET SEAL VALVES FOR ALCOA TRUCK WHEELS (9.7 MM VALVE HOLE)

PART NO.	VALVE TR NO.	A HEIGHT MM	BEND ANGLE	B LENGTH MM	HEX NUT
HAL-TV-552	552	32	—	—	HAL-HN-22
HAL-TV-553	553	60.9	—	—	HAL-HN-22
HAL-TV-553C	553C	23.6	45°	36.3	HAL-HN-22
HAL-TV-553D	553D	24.8	60°	35	HAL-HN-22
HAL-TV-553E	553E	24.8	75°	35	HAL-HN-22
HAL-TV-554D	554D	24.8	60°	49.2	HAL-HN-22
HAL-TV-555D	555D	24.8	60°	66	HAL-HN-22
HAL-TV-555E	555E	24.8	75°	66	HAL-HN-22

VALVE EXTENSIONS

AIR-FLEXX VALVE EXTENSIONS

Air-Flexx valve extensions are flexible but rigid enough to be used without a rim holder, clamp or stabilizer saving time and money. The extension withstands severe cold and heat without becoming brittle. The plastic casing will not corrode. The pin in the extension opens the tyre valve only when checking pressure or inflating. If the extension is cut in half or broken no pressure is lost from the tyre.



PART NO.	APPLICATION	LENGTH MM
HAL-HE-340	Steer and single wheels with hubcaps*	75
HAL-HE-341	Steer and single wheels with hubcaps*	85
HAL-HE-342	Inner dual tyres or steer & single wheels with hubcaps*	105
HAL-HE-343	Inner dual tyres*	145
HAL-HE-344	Inner dual tyres*	185
HAL-HE-345	Inner dual tyres*	215
HAL-HE-346	Inner dual tyres or spare wheels**	315
HAL-HE-347	Inner dual tyres or spare wheels**	412
HAL-HE-348	Inner dual tyres or spare wheels**	1000

* No need for clamp, holder or stabilizer

** For use on spare wheels and angled extension of 45°, 90°, 135° or 180°

TRUCK VALVE EXTENSIONS

PART NO.	DESCRIPTION	COLLAR TYPE	EFFECTIVE LENGTH MM
HAL-HE-369	Truck Ext	Short 9.5 mm	34.9
HAL-HE-370	Truck Ext	Short 9.5 mm	50.8
HAL-HE-371	Truck Ext	Short 9.5 mm	74.6
HAL-HE-372	Truck Ext	Short 9.5 mm	100
HAL-HE-373	Truck Ext	Short 9.5 mm	130.1
HAL-HE-383	Truck Ext	Long 25.4 mm	155.5
HAL-HE-389	Truck Ext	Long 25.4 mm	26.9
HAL-HE-390	Truck Ext	Long 25.4 mm	50.8
HAL-HE-390A	Truck Ext	Long Collar	50.8
HAL-HE-391	Truck Ext	Long 25.4 mm	74.6
HAL-HE-391A	Truck Ext	Long Collar	74.6



TRUCK VALVE EXTENSIONS HAL-HE-370 SERIES LIGHTWEIGHT EXTENSIONS

Series has the short collar for use on tube-type or tubeless valves. Available in 50.8 - 76.2 - 101.6 and 127 mm effective lengths. Has a double seal feature to assure a positive seal. .305-32 cap thread.

HAL-HE-380 SERIES STRAIGHT METAL EXTENSIONS

These screw on the standard valve stem (.305-32 cap thread) and make the valve mouth accessible for service. .305-32 cap thread.

HAL-HE-390 SERIES LIGHTWEIGHT EXTENSIONS

Lightweight extensions are the same as above except with a long collar.

HAL-HE-390A SERIES LIGHTWEIGHT ALUMINUM EXTENSIONS

Extremely light weight aluminum extensions.

DOUBLE SEAL CAP HAL-DS-1

The HAL-DS-1 flow-through valve cap is designed for high pressure truck tyre service. Seals like a high pressure valve cap, yet offers the convenience of an inflate through extension. It also performs like a check valve- the seal becomes tighter in the event of a core failure. The HAL-DS-1 reduces pressure check time by 65% offering a efficient money and labor savings alternative to the common valve cap. The heat resistant grommets provide additional protection for the extended high temperature running. The HAL-DS-1 consists of a tough, all metal housing, precision fit brass components and durable self-sealing O-ring.

Benefits:

- Inflate directly through sealing cap
- Reduces time and labor
- No lost valve caps

Technical specifications:

- Overall length 22.2 mm
- Temperature rated seal: -40°C to 121°C



HAL-DS-1

BENT EXTENSIONS FOR STANDARD BORE VALVES

PART NO.	BEND	EFFECTIVE LENGTH MM	VERTICAL LENGTH MM
HAL-HE-200	90°	34.9	19
HAL-HE-201	45°	34.9	19
HAL-HE-202	135°	34.9	23.8
HAL-HE-204	180°	36.5	12.7



HAL-HE-201



HAL-HE-200



HAL-HE-204

DUAL WHEEL FLEXIBLE VALVE EXTENSIONS HAL-FE-300 LENGTH

This extension provides easy access to the inner dual tyre found on campers, recreational vehicles, and light trucks. Fits standard valve cap threads. Comes with clamp to secure extension to wheel cut-out. 2 extensions per pack. Standard effective lengths are 177.8 mm and 228.6 mm. Effective to 200 PSI. Also available, clamp part number HAL-FE-300CL, which clamps directly to the lug nut. Other lengths available upon request.



HAL-FE-300

HAL-SFE-400 LENGTH

Similar to the HAL-FE-300 series except has steel braid over rubber hose.



HAL-SFE-400

HIGH-PRESSURE APPLICATIONS

HIGH-PRESSURE SHOCK STRUT VALVES

Constructed of stainless steel bodies for use in high-pressure shock absorber units, hydraulic pressure accumulators, surge cylinders, and high-pressure pneumatic systems. Valves have 1/2" - 20 U.N.F. - 3A threads for connection to container.

HAL-H-7607 SHOCK STRUT VALVE

For operating pressure to 2,000 PSI. Conforms to AN-812-1.

HAL-H-4361 SHOCK STRUT VALVE

For operating pressure to 3,000 psi. Conforms to AN-6287-1.

HAL-H-798 SHOCK STRUT VALVE

For use on shock struts where operating pressure is rated for 5,000 PSI. Conforms to MS-28889-2.

HAL-H-6116B

Fits .305-32 thread size with 3.1 mm NPT female connection with 70° bend. Equipped with hard fiber sealing washer. Used up to 5000 PSI working pressure.



HAL-H-7607



HAL-H-4361



HAL-H-798



HAL-H-6116B

HIGH-PRESSURE INFLATING CONNECTIONS

HAL-H-556 HIGH-PRESSURE INFLATING CONNECTION

Fits .305-32 thread size with 3.1 mm NPT male connection. Has core depressor pin, and copper sealing washer. Maximum working pressure 3000 PSI.

HAL-H-2755 HIGH-PRESSURE INFLATING CONNECTION

Fits .305-32 thread size with 3/8"-24 thread for 4.7 mm flare tube fitting, meets MS336556E3. Has core depressor pin and copper sealing washer. Maximum working pressure 3000 PSI.

HAL-2755-L LB HIGH-PRESSURE INFLATING CONNECTION.

Fits .482-26 thread size with 3/8"-24 thread for 4.7 mm flare fittings. Has core depressor pin and copper sealing washer. Maximum working pressure 3000 PSI.



HAL-H-556



HAL-H-2755

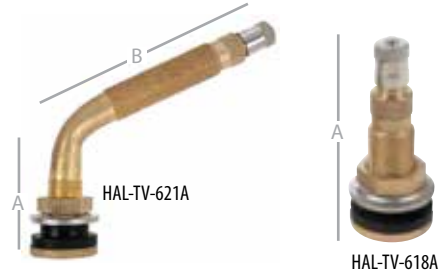


HAL-H-2755-L

AIR/LIQUID VALVES

AIR LIQUID VALVES FOR TRACTOR AND ROAD GRADER SERVICE

PART NO.	TR NO.	A MM	B MM	BEND ANGLE	VALVE HOLE
HAL-TV-618A	TR-618A	47.6	—	—	15.8
HAL-TV-621A	TR-621A	38.1	76.2	65°	15.8
HAL-TV-622A	TR-622A	44.4	114.3	90°	15.8
HAL-TV-623A	TR-623A	38.1	57.1	65°	15.8



RIM HOLE PLUGS

HAL-P-15 FOR TUBE-TYPE WHEELS

Used to plug 15.8 mm rim hole and avoid tube "pouching."



HAL-P-15

HAL-T-30

Used to seal 20.6 mm rim hole when relocating valve.



HAL-T-30

HAL-N-1012S

Used to seal 15.8 mm rim hole when relocating valve.



HAL-N-1012S

HAL-ALSP

Air-liquid spud plug. Used to replace HAL-TV-CH-3 core housing.



HAL-ALSP

CORE HOUSING

HAL-TV-CH-1

Fits old-style HAL-TR-218 and HAL-TR-220 valves.



HAL-TV-CH-1

HAL-TV-CH-3

Fits all fast flow air-liquid valves except SLB.



HAL-TV-CH-3

HAL-R-372

Fits SP816 tube spud and HAL-T-81 and HAL-C-100 spud.



HAL-R-372

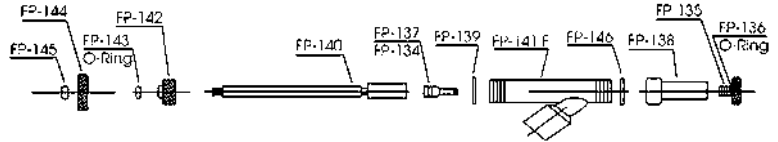
LIQUID FILL

HAL-310 VALVE ADAPTER GUN

Has a ½" female pipe thread and will attach to any calcium tyre filling pump, it will extract the valve core from a Standard Bore valve or the core housing from a tractor valve. It will securely hold the valve core or core housing from a tractor valve. It will securely hold the valve core or core housing up in the gun body during tyre filling or evacuation of liquid from a tyre. Due to the design, it will permit faster evacuation of liquid from a tyre than with other adapter guns.



HAL-310 Valve Adaptor Gun and Core Ejector



Parts list:

- HAL-FP-134 LB Core Remover
- HAL-FP-135 Adapter for Standard Valve (Equipped with HAL-FP-136)
- HAL-FP-136 O-Ring for HAL-FP-135 Adapter
- HAL-FP-137 Standard Valve Core Remover
- HAL-FP-138 Ejector Union (Equipped with HAL-FP-146)
- HAL-FP-139 Gasket
- HAL-FP-140 Stem
- HAL-FP-141F Adapter Body
- HAL-FP-142 Stem Sealing Nut
- HAL-FP-143 O-Ring for HAL-FP-142 (Stem Seal)
- HAL-FP-144 Hand Wheel
- HAL-FP-145 Lock Nut
- HAL-FP-146 T

HAL-310-K Repair Kit Includes:

- HAL-FP-134
- HAL-FP-135
- HAL-FP-136
- HAL-FP-137
- HAL-FP-143
- HAL-FP-146

HAL-N-1057

Flexible extension for HAL-310 gun.



HAL-N-1057

HAL-AQF-1 AQUA QUICK FILL HALTEC

Patent No. 5.007.448 Haltec's Aqua Quick Fill is a simple, time-saving tool that allows the user to fill a tractor tyre or large off-the-road tyre with liquid, and do other tasks while the tyre is being filled. No longer does the user have to stand by and vent the excess air pressure. With the HAL-AQF-1, air is automatically vented through a side port while the liquid is being injected into the tyre. When the tyre is filled, the water escapes from the vent hole, indicating that the tyre is full.

FLUID CONNECTORS

Coupler HAL-N-1451, ½ NPT female thread. Designed specifically for fluid use.



HAL-N-1451



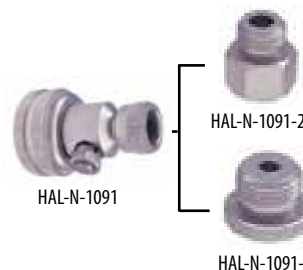
HAL-N-1452

NIPPLE HAL-N-1452

½ NPT male thread. For fluid use.

HAL-N-1091 WATER ADAPTER

For liquid fill tyres.



HAL-N-1091

HAL-N-1091-2

HAL-N-1091-3

VALVE CORES, CAPS, ADAPTERS

VALVE CORES

PART NO.	TYRE & RIM NO.	DESCRIPTION
HAL-A-100-VC-1	C-1	SB Heat-Resistant Core for Cars, Trucks and Busses.
HAL-A-144	C-2	LB Core (long). Fits 305-32 Threads
HAL-A-145	C-2	LB Core (short). Fits 305-32 Threads



VALVE CAPS (STANDARD BORE)

PART NO.	TYRE & RIM NO.	DESCRIPTION
HAL-57TT	—	Short dome cap.
HAL-89TPMS-CAPG	—	Chrome-Plated Plastic Hex Cap for TPMS
HAL-A-100-VC-2	VC-2	Metal Screwdriver Valve Cap for Removing Valve Cores
HAL-A-100-VC-3	VC-3	Metal Dome Valve Cap
HAL-A-100-VC-8	VC-8	Plastic Dome Valve Cap
HAL-A-100-VC-8G	VC-8	Plastic Green Dome Valve Cap
HAL-A-100-VC-12	—	Heavy-Duty Dome Cap for Truck Service. Has Heat-Resistant Sealing Washer.
HAL-DS-1	—	Double Seal Valve Cap
HAL-N-1202	—	Chrome-Plated Hex Cap



VALVE CAPS (LARGE BORE)

PART NO.	TYRE & RIM NO.	DESCRIPTION
HAL-A-148	VC-6	Screwdriver Valve Cap. Fits .482-26 Valve Threads.
HAL-A-149	VC-7	Hex Valve Cap for easy tightening and removing with wrench. Fits .482-26 Valve Cap
HAL-A-147	A-10	Dome Cap
HAL-8807N-3	VC-4	Screwdriver Cap for 8807N-4 and AD-1 Adapters
HAL-A-150	—	LB Short Hex Cap
HAL-A-151	—	Used only with hydro inflating valves.
HAL-A-152	VC-10	LB Short Dome Cap
HAL-A-155	—	Plastic LB Sealing Cap



VALVE ADAPTERS

HAL-AD-1

Adapts LB valve down to SB. Fits in 305-32 valve core threads.

HAL-8807N-4

Adapts LB valve down to SB. Fits over .485-26 valve cap threads.



GROMMETS, HEXNUTS, WASHERS

GROMMETS

PART NO.	TYRE & RIM NO.	FITS	USED ON
HAL-5976-5	RG-54	.453 Valve Hole	HAL-TV-416, 416L, 6008
HAL-5976-6	RG-39	.625 Valve Hole	HAL-TV-416, 416L
HAL-G-160	RG-22	.812 Valve Hole	HAL-H-41, HAL-T-81, HAL-T-30, HAL-DS-385, HAL-DS210
HAL-G-162	RG-16	.812 Valve Hole	Turret Valves, HAL-PB-210, HAL-H-1000
HAL-G-165	—	.812 Valve Hole	HAL-K-431, HAL-K-665
HAL-G-166	RG-7	.625 Valve Hole	HAL-V-618, 621A, 622A, 623A
HAL-G-170	RG-15	.625 Valve Hole	HAL-TV-500 Series, HAL-TV-570 Series
HAL-G-170S	—	.625 Valve Hole	Heat-Resistant Grommet for HAL-TV-570 Series
HAL-G-172	RG-46	.625 Valve Hole	HAL-TV-509, 510, 511
HAL-G-174	RG-48	.625 Valve Hole	HAL-TV-513, 515
HAL-G-550	RG-70	.975 Valve Hole	Fits HAL-TV-550 Series



HEX NUTS

PART NO.	TYRE & RIM NO.	FITS	USED ON
HAL-451	HN-15	1 $\frac{1}{16}$ -16	HAL-H-41, HAL-T-30
HAL-452	—	.485-26	HAL-K-431
HAL-463	—	—	HAL-753S, HAL-810F (Jam Nut)
HAL-464	HN-1	.485-26	L.B. Valves, HAL-753S, HAL-810F, HAL-867, HAL-TV-618A, 621A, 622A, 623A
HAL-10071	HN-13	.406-26	HAL-TV-500 Series, HAL-TV-570
HAL-B-222	HN-80	1 $\frac{1}{16}$ -24	HAL-M-1900, HAL-M-1950, HAL-H-4000, HAL-MR-800, HAL-MR-850, HAL-T-81
HAL-B9-2	LN-13	1 $\frac{1}{16}$ -24	HAL-B9A Assembly
HAL-HN-17	HN-17	.406-28	HAL-TV-509, 510, 511
HAL-HN-18	HN-18	.406-28	HAL-TV-513, 515
HAL-HN-21	HN-21	—	HAL-TV-540 Series
HAL-HN-22	HN-22	.375-32	HAL-H-543C, HAL-TV-540, HAL-TV-550 Series
HAL-LN-1	HN-2	—	HAL-FE-300 Series
HAL-MSN-4	HN-23	.375-32	HAL-70MS-7



O-RINGS

PART NO.	TYRE & RIM NO.	USED ON
HAL-0-320	—	Swivel Valves, HAL-H-43, HAL-H-42
HAL-0-330L	RG-60	HAL-TR-540 Series Valves
HAL-10008	—	HAL-T-670
HAL-10009	—	HAL-M-5000
HAL-A-126	—	HAL-R-762S, HAL-R-525 and SLB Angle Connections
HAL-A-127	—	HAL-R-520, HAL-R-372, HAL-R-521
HAL-A-128	—	HAL-DS-215, HAL-DS-226



WASHERS

PART NO.	TYRE & RIM NO.	FITS	USED ON
HAL-453	—	1 $\frac{1}{16}$ -24	HAL-K-431, HAL-K-665
HAL-10058	RW-8	.406-28	HAL-TV-500 Series, HAL-TV-570 Series
HAL-10058B	RW-8	.406-28	HAL-TV-500 Series, HAL-TV-570 Series
HAL-RW-13	RW-13	.410-28	HAL-TV-416
HAL-W-1101-1	RW-11	.485-26	HAL-TV-618A, HAL-TV-621A, 622A, 623A



GROMMETS, HEXNUTS, WASHERS

TANK VALVES & BEAD SEATERS

TANK VALVES

Utilized on pressure containers where gauging or servicing may be required. Tank valves are used with various gases, fluids and operating pressures. For specific application, please contact RIMEX for technical assistance.

PART NO.	OAL MM	BASE THREAD	CAP THREAD	HEX SIZE
HAL-TV-400	33.3	1/4" NPT	.305-32	9/16"
HAL-TV-401	21.4	1/8" NPT	.305-32	7/16"
HAL-TV-402	33.3	1/8" NPT	.305-32	7/16"



HAL-TV-400



HAL-TV-401



HAL-TV-402

RADIAL TYRE BEAD SEATERS

One-piece rubber tube for mounting hard-to-seat radial, bias belted or conventional truck tyres. As tyre is inflated, the lubricated bead seater forms a seal between the rim and tyre allowing the air pressure to force the beads into the rim flange. As proper pressure is reached, the bead seater slides out and over the rim.

FOR TRUCK TYRES:

- HAL-TC-50 for 16.5" and 17.5" Rims
- HAL-TC-60 for 19.5" Rims
- HAL-TC-63 for 20" Rims
- HAL-TC-70 for 22.5" and 24.5" Rims



HAL-TC-50

SERVICE GAUGES



DUAL FOOT TRUCK SERVICE GAUGES

PART NO.	CALIBRATION	INCREMENTS	BAR	CHUCK STYLE	FINISH
HAL-GA-135	10-150 PSI	2 PSI	Nylon	Angled Chuck	Chrome
HAL-GA-140	10-160 PSI	2 PSI	Nylon	Angled Chuck	Chrome/Poly
HAL-GA-155S	10-150 PSI	2 PSI	Metal	Straight-on 30° Reverse	Chrome
HAL-GA-185S	10-150 PSI	2 PSI	Metal	Straight-on 180° Reverse	Chrome

DUAL FOOT TRUCK HIGH-PRESSURE GAUGE

PART NO.	CALIBRATION	INCREMENTS	BAR	CHUCK STYLE	FINISH
HAL-GA-130	20-120 PSI	2 PSI	Nylon	Angled Chuck	Chrome
HAL-GA-160*	20-120 PSI	2 PSI	Metal	Straight-on 30° Reverse	Black Polyurethane

*Extended head

PENCIL TYRE GAUGES

Haltec Pencil-Type Tyre Pressure Gauges have a highly polished finish with an easy-to-read, 4-sided nylon indicating bar and a handy pocket clip. NOTE: All pencil gauges have a chuck guide to assure gauge fits squarely on the tyre valve. This prevents air leakage and guarantees accurate pressure readings.

PART NO.	CALIBRATION	INCREMENTS	BAR	SERVICE	FINISH
HAL-GA-105	10-50 PSI	1 PSI	Nylon	Passenger Tyre	Chrome
HAL-GA-115	20-120 PSI	2 PSI	Nylon	Truck High Pressure	Chrome
HAL-GA-120M	20-120 PSI/150-800 KPA	2 PSI	Nylon	Truck High Pressure	Chrome
HAL-GA-146	20-90 PSI	1 PSI	Nylon	Radial and Light Truck	Chrome

HAL-GCS-A GAUGE CHECK STATION

Large 101.6 mm liquid filled gauge with .9 kg graduated increments. Pressure gauge provides clear pressure readings for greater test accuracy. Accuracy $\pm 1\%$ full scale. Maximum operating pressure 160 PSI.

For digital gauge order HAL-GCS-D.

Dimensions consists of 25.4 mm W x 177.8 mm H x 127 mm D.



DIGITAL & DIAL GAUGES

DIGITAL AIR GAUGES

PART NO.	OPERATING RANGE	INCREMENTS (PSI)	APPLICATION
HAL-GA-850-330	0-160	.05	SB air gauge with HAL-CH-330 dual foot air chuck
HAL-GA-850-350	0-160	0.5	SB air gauge with HAL-CH-350 dual foot air chuck
HAL-GA-850-370	0-160	0.5	SB air gauge with HAL-CH-370 dual foot air chuck
HAL-GA-850-377S	0-160	0.5	Fits LB Digital Air Gauge with HAL-377S air chuck
HAL-DT-105	0-100	0.5	SB digital air gauge



HAL-DT-105

HAL-GA-850-370

DIAL AIR GAUGES

WON-1930 PRESSURE GAUGE

Dial gauge with swivel chuck for small bore and large bore valves (10-174 psi).



WON-1930

WON-1940 PRESSURE GAUGE

Dial gauge for large bore valves (10-174 psi).



WON-1940

WON-1976 PRESSURE GAUGE

Small bore gauge, 0-60 psi.



WON-1976



PT (Pressure Temperature) Gun

PT (PRESSURE TEMPERATURE) GUN

Allows accurate setting of operating pressures by measuring the tyres internal air pressure and then using a chart to determine the correct pressure level.

The PT Gun is available with a digital or analogue display:

PT-GUN-D: Digital

PT-GUN-A: Analogue

PART NO.	OPERATING RANGE	INCREMENTS (PSI)	APPLICATION
HAL-GA-274	0-160	5	355.6 mm Standard and LB Air Liquid Gauge
HAL-GA-276	0-160	5	1457.2 mm Standard and LB Gauge w/ extension handle and bleeder valve
HAL-GA-290	0-160	1	304.8 mm Standard and LB Air Master Gauge equipped with recalibration feature
HAL-N-1055	0-160	5	304.8 mm SB Air Gauge; equipped with an HAL-CH-335 dual foot air chuck
HAL-GA-280	0-160	1	304.8 mm SB Air Master Gauge; equipped with CH-3350P dual foot air chuck
HAL-GA-285	0-160	5	254 mm Dial Gauge with Rigid Extension
HAL-GA-289	0-160	5	Replacement Dial Gauge
HAL-N-1510	0-160	5	Cap Gauge; screws onto LB and SLB valves for inspection of tyre pressure
HAL-GA-300-377	0-160	2	381 mm LB air gauge with built-in filter and accessible reservoir for easy cleaning



HAL-GA-285



HAL-N-1055



HAL-GA-290



HAL-GA-274



HAL-GA-280



HAL-GA-300-377



HAL-GA-276



HAL-N-1510



HAL-GA-289

DIGITAL & DIAL GAUGES

GAUGES, TREAD DEPTH GAUGES

TREAD DEPTH GAUGES

HAL-N-1410 OFF-HIGHWAY TYRE TREAD DEPTH GAUGE

Indicating bar is calibrated with 32nds on one side, other side is millimeters. Has magnified sight-glass for easy readability. Comes with a carrying holster. The finest instrument available. If magnifying glass is not required, order the HAL-N-1710



HAL-N-1410

HAL-N-1420H TRUCK TREAD DEPTH GAUGE

Calibrated in millimeters, measures not only shoulder wear but tread depth. Its durable metal construction can be custom imprinted. The gauge also comes in a pocket-size, clear protective plastic pouch.



HAL-N-1420H

HAL-GA-190 TYRE TREAD DEPTH GAUGE

Quickly and accurately measures how much tread is left on tyre. Calibrated in millimeters. Chrome-plated brass with pocket clip.



HAL-GA-190

HAL-5131-LARGE BORE TREAD DEPTH GAUGE

Two piece gauge made up of slide tube and indicator. Calibrated 7 to 152 mm. Tubing spans tread lugs on off-road tyres.



HAL-5131

DT-190-32 DIGITAL TREAD DEPTH GAUGE

Displays tread depth in millimeters, inches and fractions, calibrated 1/32". Easy to read LCD screen. Zero function allows for a zero gauge at any time for quick and accurate readings.



DT-190-32

LARGE BORE GAUGES

These gauges work with all LB, SLB, ZB, and MB products.

HAL-GA-240 STRAIGHT PENCIL GAUGE

Straight-on chuck fits Standard and LB valves. Calibrated 20-120 PSI in 2-lb. increments. Furnished with pocket clip.



HAL-GA-240

HAL-GA-250 HIGH PRESSURE GAUGE

10-150 lbs. in 3 lb. units. For Standard and LB valves. Has nylon indicating bar and Haltec Posi-Seal washer.



HAL-GA-250

HAL-GA-255 LARGE BORE SWIVEL FOOT GAUGE

Nickel-plated brass. Calibrated 10-150 in 2 lb. increments. Easy to read, nylon slide bar. Swivels 360° for those hard-to-reach valves. Haltec Posi-Seal replacement washer (HAL-10095) available. HAL-GA-255S same gauge with metal indicating bar.



HAL-GA-255

HAL-GA-255S-RCL LARGE BORE SWIVEL GAUGE-RECALIBRATABLE

Recalibratable. Same description as HAL-GA-255S, see above.



HAL-GA-255S-RCL

SERVICE TOOLS

HAL-TL-680 THREE-WAY LB TOOL

For removing large bore cores, hex caps and screw driver caps.



HAL-TL-690 FOUR-WAY LB CORE TOOL

Thread repair for core and cap threads and core remover. For LB and SLB.

HAL-TL-695

The HAL-TL-695 is a four-way tool that repairs the internal and external threads on air-liquid valve spuds. It also is a LB valve core insertion tool, and it repairs internal and external threads.



HAL-ASP-10 DEFLATION ASPIRATOR

Tube deflation aspirator for LB.

HAL-N-1610 LB CORE TOOL

Large bore core tool, equipped with sliding sleeve which holds the core during removal.



HAL-N-1710 LB CORE TOOL

Special valve core screwdriver tool. Sliding sleeve allows positive grip on valve core for those hard-to-reach valves.



HAL-N-1810 LB HEX CAP REMOVER

With plastic handle for positive grip - OAL 10".



HAL-N-1910 LB CORE REMOVER

Has plastic handle for positive grip - OAL 6".



HAL-TL-631 SLB RETHREADING TOOL

Used to rethread 1/16" - 24 thread on any Super Larger Bore valve.



HAL-TL-LN-10

The HAL-TL-LN-10 is a nut driver that installs the HAL-LN-10 nut onto the HAL-TV-218A/HAL-TV-220A tractor tyre valve.



HAL-8909-C

Guides, aligns, and holds Large Bore valve through rim hole while mounting the tyre.



LARGE BORE AIR CHUCKS

HAL-322 LB DUAL FOOT AIR CHUCK

45° angle chuck allows easy access to the tyre valve. Has ¼" NPT female thread.



HAL-326 SCREW-ON AIR CHUCK

Has .485-26 internal thread and ½" NPT external thread. Full flow for seating of tyre beads.



HAL-377 LOCK-ON AIR CHUCK (LONG)

Chuck locks on valve when cocked on threads. Has greater air flow and seat cannot be blown out if seal fails. Has ¼" NPT female thread. Replacement washer HAL-313.



HAL-328 LOCK-ON AIR CHUCK (SHORT)

Chuck locks on valve when cocked on threads. Has greater air flow and seat cannot be blown out if seal fails. Has ¼" NPT female thread.



HAL-H-4660A CLIP-ON AIR CHUCK

Securely locks onto valve when sleeve is pushed forward, releases when sleeve is pulled back. Has ¼" NPT female thread.



HAL-10013 LB SCREW-ON CHUCK

Fits ¾" ID air hose. Screws on to LB valves. Open and close the valve core by turning the knob on top of the chuck.



STANDARD BORE AIR CHUCKS

HAL-CH-315 BALL FOOT AIR CHUCK WITH CLIP

3/4" hex, with 1/4" NPT female thread. Heavy-duty spring firmly holds chuck onto valve while inflating tyre. Available for use with tyre changers. Order HAL-CH-315-OP. Uses replacement washer HAL-5565-3.



HAL-CH-315

HAL-CH-340 LOCK-ON AIR CHUCK

Securely locks onto valve when sleeve is pushed forward. Releases when sleeve is pulled back. 1/4" NPT female thread. Available for use with tyre changers. Order HAL-CH-340-OP.



HAL-CH-340

HAL-H-5265

The HAL-H-5265 is a specially designed air chuck that locks onto the cap threads of a SB valve stem when the sliding sleeve is pushed to the forward position. The chuck releases when the sleeve is pulled back. Available for use with tyre changers and auto tyre inflators. Order HAL-H-5265 OP



HAL-H-5265

HAL-CH-305

Ball Foot Air Chuck 3/4" hex, brass with 1/4" NPT female thread. Available for use with tyre changers and auto tyre inflators. Order HAL-CH-305-OP.



HAL-CH-305

HAL-CH-318 CHUCK CLIP

For HAL-CH-315 and HAL-CH-315-OP.



HAL-CH-318

EUROPEAN-STYLE CLIP-ON AIR CHUCKS

HAL-CH-320

Very similar to the HAL-N-1200 European-style clip-on air chuck. This is a closed-type chuck and offers the best seal available. Has serrated shank for 1/4" I.D. hose.



HAL-CH-320

HAL-CH-360

This chuck features the popular European-style clip with a brass 1/4" female fitting. Compact, durable and easy to use, this chuck is available either closed (HAL-CH-360) or open (HAL-CH-360-OP). Uses replacement washer HAL-10140.



HAL-CH-360

HAL-CH-360S

Includes all the features of our standard HAL-CH-360, with the added benefit of a spring loaded deflector pin. Designed specifically to ensure proper seal closure during multi-tyre and nitrogen conversion applications.



HAL-CH-360S

HAL-N-1199

Fits 3/16" hose. Hose-open style.



HAL-N-1199

HAL-N-1200

Fits 1/4" I.D. hose-open style.



HAL-N-1200

HAL-CH-300

The HAL-CH-300 Lock-On Air Chuck with a small head design makes for easy access to hard-to-reach valves on inside dual wheels. The extended head design improves the lock-on feature. Has 1/4" NPT female threads.



HAL-CH-300

HAL-CH-330-LO DUAL FOOT AIR CHUCKS

Straight-on 30° reverse angle chuck. Available with the lock-on feature. Has ¼" NPT female thread. 152.4 mm long.

HAL-CH-330 Dual Foot Air Chucks: Same as HAL-CH-330-LO except without lock-on feature.



HAL-CH-330-LO

HAL-CH-333-LO

Similar to CH-330-LO but with extra long length of 355.6 mm.



HAL-CH-333-LO

HAL-CH-335 DUAL FOOT AIR CHUCK

Dual foot for hard-to-reach tractor, dual wheel trucks and bus tyres. ¼" NPT female threads. For standard air line service. 152.4 mm long.



HAL-CH-335

HAL-CH-350-LO

A new design offers greater durability and is more user friendly on the straight-on and 30° reverse angle chuck. This 152.4 mm long chuck finished with an attractive black polyurethane coating has ¼" NPT female threads.



HAL-CH-350-LO

HAL-CH-355-LO

Similar to HAL-CH-350-LO but with extra long length of 355.6 mm.



HAL-CH-355-LO

HAL-CH-370-LO

A special air chuck with a straight-on connection and a 180° reverse angle chuck allows easier access to valves located in tight, hard-to-reach places. The HAL-CH-370-LO is 152.4 mm long and has ¼" female threads.



HAL-CH-370-LO

SURE-LOCK VALVE CORE TOOLS

A special design allows the valve core to stay attached to the tool after it is removed from the valve. A great tool to keep the valve core from getting dropped or lost.

PART NO.	DESCRIPTION	LENGTH
HAL-TL-131	Valve Core Tool for SB Cores	22.2
HAL-TL-132	Valve Core Tool for Cars	50.8
HAL-TL-133	Valve Core Tool for Trucks	133.3
HAL-TL-134	Valve Core Tool for LB Cores	101.6



HAL-TL-131



HAL-TL-132



HAL-TL-134



HAL-TL-133

STANDARD BORE VALVE TOOLS

HAL-TL-612 STANDARD BORE CORE TOOL

With an overall length of 203.2 mm and oversized handle, the HAL-TL-612 provides a firm grip for inserting and removing valve cores.



HAL-TL-612

HAL-TL-620 STANDARD BORE CORE TOOL

Plastic handle provides firm grip for inserting and removing valve core.



HAL-TL-620

HAL-TL-633 VALVE CAP TOOL

The HAL-TL-633 makes it easy to remove and install valve caps on inside dual wheels. Designed for aluminum wheels with small hand holes, it comes with a protective sleeve to prevent scratching. Also works great at removing tight or cross-threaded caps. Positive hold while valve is serviced. Keeps cap in tool. Length 209.5 mm without handle.



HAL-TL-633

HAL-TL-635 SB VALVE CORE TOOL

Haltec equivalent to Schrader 2688 and Eaton 5406. Tool is made from hex steel, making it very sturdy, yet economical.



HAL-TL-635

HAL-TL-645 VALVE FISHING TOOL

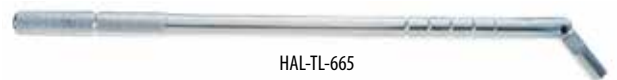
Combines valve core wrench and deflating pin with flexible cable for fishing valve through rim hole. Available in 609.6 mm HAL-TL-645-24



HAL-TL-645

HAL-TL-665 VALVE STEM INSTALLATION TOOL

Rugged tool handles any length valve in any size rim. Screws over valve threads and quickly installs valve into valve hole by applying pulling pressure.



HAL-TL-665

HAL-TL-610 STANDARD BORE 4-WAY VALVE TOOL

Repairs and reconditions inside and outside valve threads. Inserts and removes cores. Corrosion-resistant, cadmium-plated.



HAL-TL-610

HAL-TL-615 STANDARD BORE 2-IN-1 VALVE TOOL

Combination valve core remover and deflator. Corrosion-resistant, cadmium-plated.



HAL-TL-615

HAL-ASP-1 TUBE STANDARD BORE DEFLATING ASPIRATOR

Creates vacuum by screwing aspirator onto valve mouth and applying air chuck to threaded inlet. Fits SB valves.



HAL-ASP-1

HAL-TL-685 CORE INSTALLATION TOOL

127 mm length.



HAL-TL-685

INFLATION GAUGES

GAUGES

HAL-I-405 INFLATING GAUGE

Meets OSHA Requirements. Inflation unit with in-line gauge. Lightweight aluminum body with brass calibration bar and O-rings seals. Calibrated 10-120 PSI in 2-lb. increments, precise inflation control, ¼" female NPT inlet with HAL-CH-360-OP clip-on air chuck. Also available with hose lengths of 0.9 m or 2.7 m. Specify length when ordering.

HAL-I-405-LO INFLATING GAUGE

Same as HAL-I-405 above except with HAL-CH-330-LO lock-on chuck for use on aluminum wheels.



HAL-405-3LOM

PART NO.	DESCRIPTION	HOSE LENGTH M	AIR CHUCK
HAL-I-405-3M	Inflator with Clip-on Air Chuck	0.9	HAL-CH-360-OP
HAL-I-405-6M	Inflator with Clip-on Air Chuck	1.8	HAL-CH-360-OP
HAL-I-405-9M	Inflator with Clip-on Air Chuck	2.7	HAL-CH-360-OP
HAL-I-405-3LOM	Inflator with Lock-on Air Chuck	.9	HAL-CH-330-LO-OP-1
HAL-I-405-6LOM	Inflator with Lock-on Air Chuck	1.8	HAL-CH-330-LO-OP-1
HAL-I-405-9LOM	Inflator with Lock-on Air Chuck	2.7	HAL-CH-330-LO-OP-1

HAL-I-406M INFLATING GAUGE

Has 3.6 m of hose and HAL-CH-335 dual foot air chuck to service small diameter wheels. Gauge is calibrated 10-120 PSI in 2-lb. increments.

AIR MASTER DIAL GAUGE

The Air Master Dial Gauge comes in a variety of hose lengths and chuck types to meet the varied needs of the tyre professional. The inflator is compact with an ergonomic design that makes the gauge comfortable to operate and easy to use. One button allows the operator to inflate or deflate. The gauge reads from 4 to 140 PSI in 2 pound increments and is also calibrated from 0 to 10 bars in .1 bar increments. The dial gauge is protected with a ribbed rubber shroud.



HAL-I-406M

PART NO.	DESCRIPTION	HOSE LENGTH	AIR CHUCK
HAL-I-520	Dial Gauge Inflator	16"	HAL-N-1200
HAL-I-515-6	Dial Gauge Inflator	1.8 m	HAL-CH-360-OP
HAL-I-515-9	Dial Gauge Inflator	2.7 m	HAL-CH-360-OP
HAL-I-530-6	Dial Gauge Inflator	1.8 m	HAL-CH-330-LO-OP-1
HAL-I-530-9	Dial Gauge Inflator	2.7 m	HAL-CH-330-LO-OP-1



HAL-I-530-6

HAL-I-450 DIGITAL INFLATION GAUGE

Easy to read digital inflation unit calibrated from 0 to 150 PSI in 0.5 increments. Available in a variety of hose lengths and chuck types to meet your needs. Entire body is protected with a rubber cover. The LCD readout is backlit for ease of reading in dark areas and the battery is replaceable. Powered by two AA batteries (included).



HAL-I-450

HAL-RI-250-20 REMOTE MOUNTED REGULATED INFLATOR

Ideal for wall or post mounting. Unattended inflation to set pressure. Quick disconnect to stop inflation and deflate the tyre in an emergency. On/off ball valve to start and stop inflation. 1/4" NPT inlet.



HAL-RI-250-20

HAL-I-401 EXTRA HEAVY-DUTY LB INFLATOR WITH STRAIGHT CLIP-ON CHUCK

1.5 m LB inflator has 1/2" ball valve with provision for checking air pressure and HAL-H-4660A straight lock-on chuck. Rubber hose is 1.5 m long. Inflator has a 3/8" I.D. for maximum air flow. Threaded for 1/2" male NPT hose fittings.



HAL-I-401

HAL-I-402 SERIES SAFETY INFLATOR WITH .9 OR 2.7 M HOSE

Has pressure check valve for exact pressure check with your pencil gauge. Has manual bleed valve for adjusting tyre pressure and HAL-CH-360-OP flow-through clip-on chuck.



HAL-I-402

HAL-I-404 HEAVY-DUTY HOSE INFLATOR WITH 1.5 M HOSE

Heavy-duty inflator has two separate clip-on chucks. Once chuck, HAL-CH-360, fits SB valves and the other, HAL-H-4660A, LB valves. Has spring-loaded, hand-operated valve and has provisions for checking air pressure during inflation. Threaded for ¼" male NPT hose fittings.



HAL-I-408 DUAL TYRE INFLATOR GAUGE WITH 1.5 M HOSE

Hose connects to a tee connection, .0.6 m of hose on each side with 304.8 mm sliding sleeve, lock-on chuck for easy access to inner dual and dual foot lock-on chuck for outer dual tyre. Allows user to engage and disengage chuck quickly. As the same air source serves the unit, both tyres are automatically inflated equally. Lock-on chuck fits any standard truck valve stem or the HAL-DS-1 double seal cap.



HAL-I-409 LB INFLATION GAUGE WITH 1.8 M HOSE

LB inflation unit with in-line gauge. Equipped with HAL-H-4660A chuck. Gauge is calibrated 10-120 PSI in 2-lb. increments.



HAL-I-350-20 LB INFLATION GAUGE WITH 6 M HOSE

Has ½" ball valve with dial gauge for checking pressure. Equipped with safety coupler for releasing the pressure in case of an emergency. ½" NPT connection, ¾" ID for maximum air flow.



HAL-I-340-20 LB INFLATION GAUGE WITH 6 M HOSE

Has 1/2" ball valve with dial gauge for checking pressure. Equipped with safety coupler for releasing the pressure in case of an emergency. 1/2" NPT connection, 3/8" ID for maximum air flow.



HAL-1-496-20 HAL-IN-95 INFLATOR W/6 M HOSE

Safely removes operator away from blast zone. Shut-ff valve (ball valve) enables operator to stop inflation for proper tyre inspection. Includes HAL-IN-95 and three additional unions to adapt different sizes such as SLB, MB and ZB.



WON-1991 INFLATING GAUGE

SB inflating gauge with 1.5m hose (10-174psi). For the longer 5m hose, order WON-1991-KPS-5.



IDX MOBILE TROLLEY

Designed to give total mobility to the TyreSense IDX system. Rugged steel enclosure keeps the components safe and the heavy duty wheels make it easy to move the system .



AUTOMATIC INFLATOR SYSTEMS

TYRESENSE IDX

TRS-IDX

Want to reduce down-time... while airing up? Use the IDX—the fastest inflator on the market! The correct tyre inflation pressure plays a critical role in the performance and life of an OTR tyre. RIMEX engineered the IDX system to be a safe and fast way to accurately inflate and deflate OTR tyres. Completely weather-resistant, the IDX can be mounted to the shop wall, on a mobile cart or on service vehicles.

SAFE

- Keeps personnel a safe distance from the potential hazard zone, using remote operating controls.

FAST

- No need to stop the air flow and perform manual pressure checks, as temperature and pressure is continually monitored by the TyreSense wheel sensor.

FLEXIBLE

- **Time-based inflation settings**—IDX works perfectly well without TyreSense wheel sensors.
- **Weather-resistant**—IDX can be mounted to the shop wall, on a mobile cart or on a service vehicle.
- **Customizable**—IDX has 32 unique preset groups, each with settings for cold inflation pressure, gauge pressure and time-based inflation.



TRS-IDX



- **Inflation/deflation options**—IDX has three operating methods:
 - TyreSense Sensor**—Control inflation or deflation with configured settings based on internal wheel sensor readings.
 - Sensor Override**—Use time-based automatic inflation or deflation to override wheel sensors.
 - Manual**—Start and stop inflation or deflation at any point to manually trim pressures.
- **Shut-off options**—IDX has two automatic shut-off methods for inflation and deflation:
 - 'Gauge' when the sensor data matches the preset gauge pressure, the IDX shuts off.
 - 'Smart' the IDX calculates the shut-off time based on the current rate of inflation/deflation. This option eliminates any chance of over or under inflation due to sensor data lag.



HAL-89XDA



HAL-89MXA



HAL-89XDB



HAL-89XDZ



HAL-89XTC



HAL-89XHB

HAL-89XDA AUTOMATIC TYRE INFLATION SYSTEM

Ideal for: vehicle service for: vehicle service centers, auto-mobile dealerships, and rental facilities.

HAL-89MXA AUTOMATIC TYRE INFLATION SYSTEM

Ideal for tyre cages and tyre changers.

HAL-89XDB HIGH VOLUME INFLATOR

Ideal for fleet operations, tyre service centers and tyre mounters. Designed specifically for inflating large OTR tyres or multiple truck tyre.

HAL-89XDZ OVER INFLATOR

Ideal for retread centers, tyre service centers and tyre mounters.

HAL-89XTC TEMPERATURE COMPENSATING INFLATOR

Specifically designed for OTR industrial, mining and continuous operation applications.

HAL-89XHB HIGH PRESSURE INFLATOR

Specifically designed to inflate on 19.5" rims and larger or multiple truck tyres.

Primary features and benefits on all inflators:

- 5 to 145 PSI operating range, adjustable in 1 PSI increments
- Accurate to .3 PSI
- Nitrogen compatible
- 110-volt with 12-volt option
- All weatherproof enclosures; Note - The MDA model has a polycarbonate enclosure, all other models have a die-cast aluminum enclosure
- Large, easy to read, backlit, LCD screens
- Capable of setting the bead on a tyre when proper operating conditions are met
- Self-calibrate during power up or every 6 minutes

OTR TYRE DEFLATION TOOL

HAL-OTR-TDT DEFLATION CART

- Deflator greatly decreases the time and money it takes to deflate a large OTR tyre
- Operates most effectively when using a compressor producing 155 cfm at 150 PSI
- Comes equipped with heavy-duty axles and flat-free pneumatic tyres
- Low-maintenance tool with short term ROI
- Easy-to-service air exhaust muffler
- The tool has been engineered and certified
- Quiet - operates at 80 dB

Comes equipped with:

- Cold weather 7.6 m air line rated for 300 PSI replacing the industry's standard 4.5 - 6 m safety deflation/inflation air lines being used
- Valve stem adapter - c/w unions for both the SLB and ZB size valve stems
- Weather-guard muffler rain cover



HAL-OTR-TDT

HAL-OTR-TDC-SYS DEFLATION CART SYSTEM

- Enclosure protects the deflation equipment from falling debris
- Side and rear vents allow the deflator to release air from within the enclosure
- Sliding control panel door used to protect the gauges and control valve
- Rear vent is removeable so that the deflation filters can be cleaned
- Handle is designed to be pulled with a pintle hook or pulled by hand
- Top is designed to be used as a tool or equipment tray
- Optional beacon light to notify the user when the tyre is deflated to a safe level



HAL-OTR-TDC-SYS

HAL-OTR-WALL MOUNT DEFLATOR

- 106 cm L x 45.7 cm W mounting plate (custom sizes available)
- Equipped with 2 1/2" PVC coupler on the exhaust side
- Comes with a 6 m reinforced inflation/deflation air line.



HAL-OTR-WALL MOUNT

TOOLING

Lock Ring Support Stand54
Lock Ring Gap Wrap54
Rim Wear Gauges55
Studs And Nuts56
Bead Breakers58
Mobile Press61
Bead Breaking Rams.62
Air/Hydraulic Pumps63
Air/Hydraulic Pump Accessories.63
Impact Wrenches64
Torque Tools65
Tyre Levers69
Wheel Nut Indicators70
Wheel Chocks71
Hubodometer71
Cribbing72
Truck Wheel Dolly.72

LOCK RING SUPPORT STAND

RIMEX designed the Lock Ring Support Stand (LRSS) with SAFETY in mind. The support stand catches the one piece lock ring in the event it 'springs off' the wheel or rim during the assembly or disassembly process.

LRSS FEATURES:

- Will not dislodge from the wheel or rim base when 'catching' the lock ring
- Once installed, the LRSS can remain in the wheel/rim during the tyre change
- The LRSS acts as a support and eliminates the need to hold the lock ring during installation
- Robust design weighing 11.7 kg
- Manually telescoping length with finite adjustments
- Torque Nut Drive ensures precise tension control
- Two designs to choose from:

WHEEL/RIM SIZE	PART NO.
45" - 51"	785-000-0182
57 - 63"	785-000-0171

- 57 - 63" stand comes with multiple upper and lower bases to fit all RIMEX wheels and rims



NOTE: The LRSS is specifically designed to fit RIMEX wheels and rims. Confirm proper fit before using with other manufacturers wheel and rims.



LOCK RING SUPPORT STAND / LOCK RING GAP WRAP

LOCK RING GAP WRAP

RFS-LRGW

Designed to aid with the manual handling of 51, 57 and 63" lock rings and to help reduce the incidence of finger related injuries, RIMEX Lock Ring Gap Wraps are placed around the ends of the lock ring and securely held in place by magnets and Velcro straps.



RFS-LRGW



RIM WEAR GAUGES

GUTTER GROOVE PROFILE GAUGE

782-000-0028

RIMEX engineered the Gutter Groove Profile Gauge to help identify the lock ring and O-ring grooves on a wheel. It is designed to fit flush against the wheel base, with any gaps between the gauge and the wheel indicating worn away material on the base. If the wear exceeds 2 mm, the gutter section should be replaced.



782-000-0028

GROOVES AND LOCK RING GAUGE KIT

782-000-0126

The Grooves and Lock Ring Gauge Kit is compact and easy to store. Like the Gutter Groove Profile Gauge, identifies both what lock ring groove is in a wheel as well as allows for checking what type of lock ring one may have.



782-000-0126

SIDE RING PROFILE GAUGES

Our Side Ring Profile Gauges help identify the style of side ring and is a visual aid to determine the amount of wear.

It is important to evaluate the level of wear between the side ring and the bead band/back lip as well as the outer diameter of the side ring where contact is made with the tire. Once the depth of the material in the inner lip and/or the outer diameter has eroded to a level of 2 mm, we recommend the side ring be removed from service.

RIMEX currently offers three Side Ring Profile Gauges for large OTR product:



782-000-0026
suits 6.0", side rings (S6057)



782-000-0027
suits 5.0", side rings (S5051, S5057, S5063)



782-000-0124
suits 4.0", side rings (S4049)

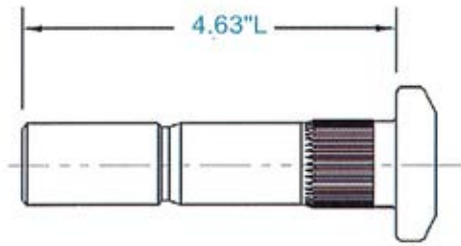
STUDS AND NUTS

All RIMEX studs and nuts are consistently manufactured to the highest quality using a three-step process:

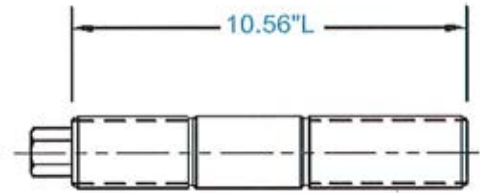
1. Rolled thread method
2. Heat treatment
3. De-embrittlement process

This attention to detail ensures good mechanical characteristics of all RIMEX studs and nuts and helps to achieve and maintain proper wheel torque and payload.

CATALOGUE INDEXING



730-000-0065



730-000-0076

THE BUTTON HEAD STUD

PART NO.	OEM PART NO.	DESCRIPTION	RIMEX "DRY" TORQUE
730-000-0065	2V7520	CAT 992C / D Button Head Stud - 4.63"L	918 lbs

THE DOUBLE ENDED STUD

PART NO.	OEM PART NO.	DESCRIPTION	RIMEX "DRY" TORQUE
730-000-0076	EH-3437	KOMATSU 930E Double Ended Stud - 10.56"L (57")	2033 lbs

CATERPILLAR TRUCKS

CATERPILLAR 773 / 777

PART NO.	OEM PART NO.	DESCRIPTION	RIMEX "DRY" TORQUE
730-000-0039	4D8695	CAT 773 / 777 Button Head Stud - 4.00"L	2355 lbs
730-000-0122	2G4996	CAT 773 / 777 Button Head Stud - 5.12"L	2355 lbs
730-000-0006	5D0765	CAT 773 / 777 Nut	
730-000-0024	5D0764	CAT 773 / 777 Washer	

CATERPILLAR 785 / 789

PART NO.	OEM PART NO.	DESCRIPTION	RIMEX "DRY" TORQUE
730-000-0145	8X2560	CAT 785 / 789 Button Head Stud - 4.63"L	918 lbs
730-000-0014	8X2561	CAT 785 / 789 Button Head Stud - 5.59"L	918 lbs
730-000-0009	2J3507	CAT 785 / 789 Nut	
730-000-0010	5P8250	CAT 785 / 789 Washer	

CATERPILLAR 793

PART NO.	OEM PART NO.	DESCRIPTION	RIMEX "DRY" TORQUE
730-000-0016	8X0274	CAT 793 Button Head Stud - 4.63"L	786 lbs
730-000-0170	1906095	Cat 793 Button Head Stud (ELWS) - 5.56"L	
730-000-0050	7X0851	CAT 793 Nut	
730-000-0049	6V8237	CAT 793 Washer	

KOMATSU TRUCKS

KOMATSU 785 / 330M

PART NO.	OEM PART NO.	DESCRIPTION	RIMEX "DRY" TORQUE
730-000-0047	561-2262-910	KOMATSU 785 / 330M Double Ended Stud - 6.50"L (OE w/o Hex)	1617 lbs
730-000-0073		KOMATSU 785 / 330M Double Ended Stud - 7.00"L	1617 lbs
730-000-0048	582-2711-291	KOMATSU 785 / 330M Nut	

KOMATSU 730E

PART NO.	OEM PART NO.	DESCRIPTION	RIMEX "DRY" TORQUE
730-000-0094	WA2953D	KOMATSU 730E Double Ended Stud - 8.06"L	1031 lbs

KOMATSU 830E

PART NO.	OEM PART NO.	DESCRIPTION	RIMEX "DRY" TORQUE
730-000-0029	ED-0611	KOMATSU 830E Double Ended Stud - 6.31"L	1031 lbs
730-000-0041	TA-2470/TY1633*	KOMATSU 830E Double Ended Stud - 7.50"L	1031 lbs
730-000-0030	TA-2572	KOMATSU 830E Flange Nut	

* Not an exact match to OEM part

KOMATSU 930E

PART NO.	OEM PART NO.	DESCRIPTION	RIMEX "DRY" TORQUE
730-000-0076	EH-3437	KOMATSU 930E Double Ended Stud - 10.56"L (57")	2033 lbs
730-000-0077	EC-9962	KOMATSU 930E Button Head Stud - 6.09"L (57")	2033 lbs
730-000-0078	EG-7679	KOMATSU 930E Button Head Stud - 7.75"L (57")	2033 lbs
730-000-0062	WA-5657	KOMATSU 930E Flange Nut (57")	
730-000-0075	ED-3439	KOMATSU 930E Special Cap Nut for Outer Rear (57")	

KOMATSU 930E-2

PART NO.	OEM PART NO.	DESCRIPTION	RIMEX "DRY" TORQUE
730-000-0067	GE-0534	KOMATSU 930E-2 Double Ended Stud - 10.81"L (63")	1836 lbs
730-000-0068	GE-0533	KOMATSU 930E-2 Button Head Stud - 6.75"L (63")	1836 lbs
730-000-0089		KOMATSU 930E-2 Double Ended Stud - 8.81"L (63")	1836 lbs
730-000-0079	GE-0536	KOMATSU 930E-2 Flange Nut (63")	



Contact your local dealer for studs and nuts not listed here.

BEAD BREAKERS

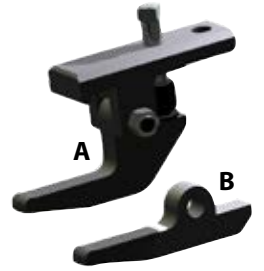
15 T RIMEX BEAD BREAKER

785-000-0001

With a 6" stroke and weighing 22.6 kg, the single hook design of the 15 T Bead Breaker breaks the tyre bead from a solid back section or flange without damaging the tyre.

A custom made Universal Jaw (785-000-0068) is supplied with each tool. The two removable lower jaws (pictured right) means the Bead Breaker can be used on numerous wheel applications.

(A) 785-000-0066, (B) 785-000-0067



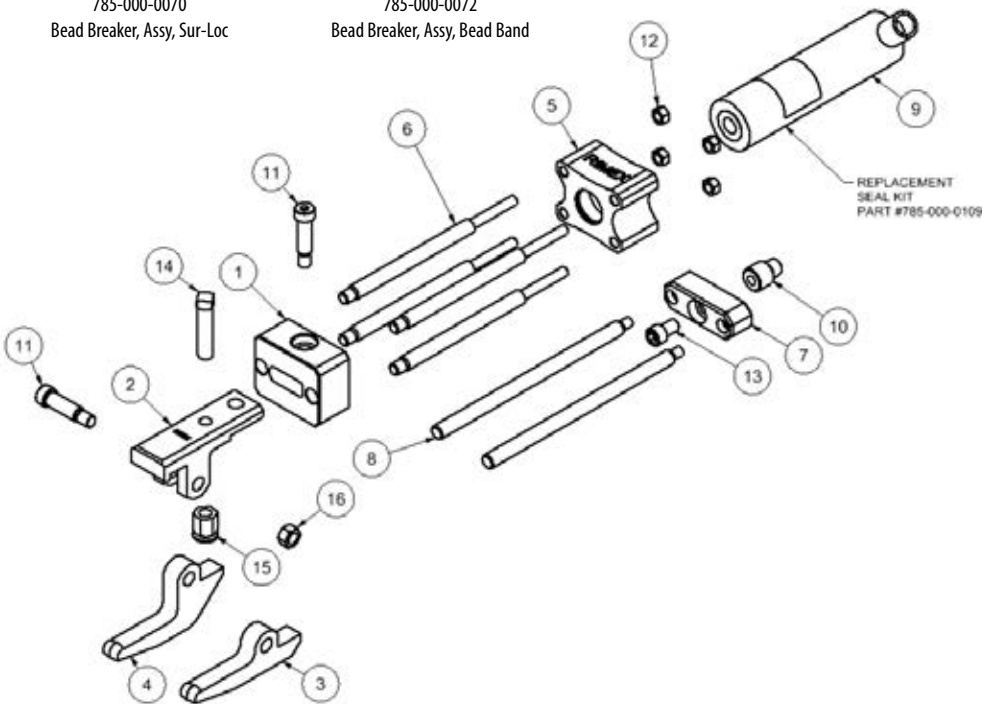
785-000-0068



785-000-0070
Bead Breaker, Assy, Sur-Loc



785-000-0072
Bead Breaker, Assy, Bead Band



REPLACEMENT
SEAL KIT
PART #785-000-0109



785-000-0001

BEAD BREAKERS

ITEM	QTY	PART NO.	DESCRIPTION
1	1	785-000-0002	Tool, Bead Breaker, Front Body Block
2	1	785-000-0065	Tool, Breaker Jaw, Upper, Uni
3	1	785-000-0066	Tool, Bead Breaker, Lower Jaw, Uni BB
4	1	785-000-0067	Tool, Bead Breaker, Lower Jaw, Uni BS
5	1	785-000-0003	Tool, Bead Breaker, Back Body Block
6	4	785-000-0004	Tool, Bead Breaker, Body Shaft
7	1	785-000-0005	Tool, Bead Breaker, Fork Base Block
8	2	785-000-0006	Tool, Bead Breaker, Fork Shaft
9	1	785-000-0105	Tool, Bead Breaker, 15 T 152.4 mm Cylinder
10	1	785-000-0007	Tool, Bead Breaker, Cylinder Adaptor
11	2	030-000-0010	1/2 x 1.0 Socket Head Cap Screw
12	4	030-000-0012	NC Nuts GR8 - 1/2"
13	1	030-000-0014	Socket Head Cap Screw 5/8NC x 1.0
14	1	030-000-0040	SETSC, SQHD, 0.75 x 3.0"
15	1	030-000-0052	Swivel Pad, 3/4 NC
16	1	030-000-0053	Nut, HX, 0.625-NC, GR5, Plated

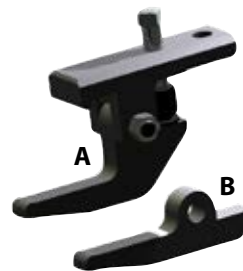
25 T RIMEX BEAD BREAKERS

785-000-0061

Weighing 30.3 kg, the dual jaw design and a 10" stroke gives the 25 T Bead Breaker more power when required.

A custom made Universal Jaw (785-000-0068) is supplied with each tool. The two removable lower jaws (pictured right) means the Bead Breaker can be used on numerous wheel applications.

(A) 785-000-0066, (B) 785-000-0067



785-000-0068

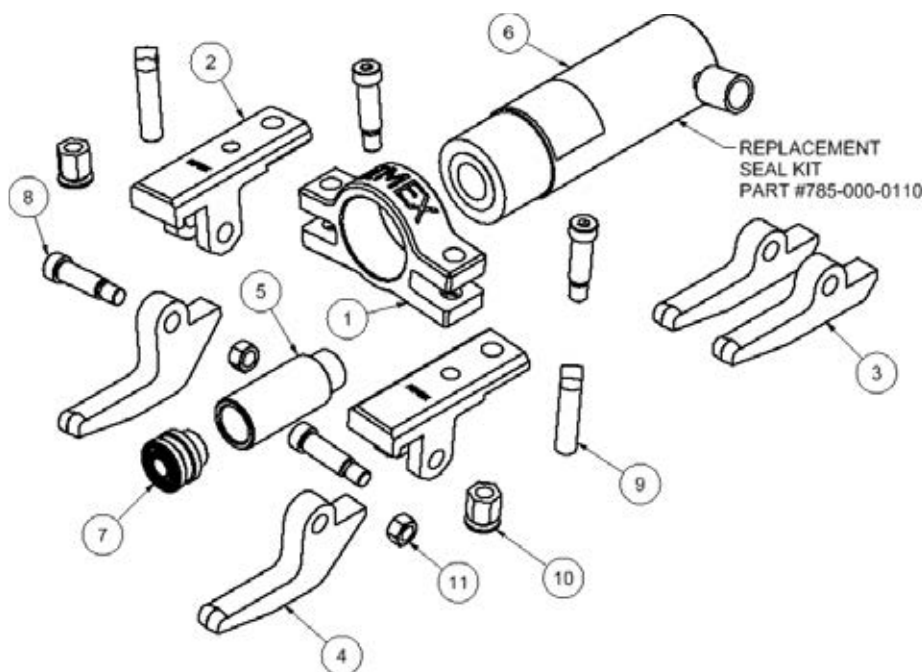
OPTIONAL JAWS (sold separately)



785-000-0070
Bead Breaker, Assy, Sur-Loc



785-000-0072
Bead Breaker, Assy, Bead Band



785-000-0061

ITEM	QTY	PART NO.	DESCRIPTION
1	1	785-000-0042	Tool, Bead Breaker, 25 T Body
2	2	785-000-0065	Tool, Breaker Jaw, Upper, Uni
3	2	785-000-0066	Tool, Bead Breaker, Lower Jaw, Uni BB
4	2	785-000-0067	Tool, Bead Breaker, Lower Jaw, Uni BS
5	1	785-000-0071	Tool, Bead Breaker, 25 T Extension
6	1	785-000-0106	Tool, Bead Breaker, 25 T 152.4mm cylinder
7	1	785-000-0108	Tilt Saddle, 25 T
8	4	030-000-0010	½ x 1.0 Socket Head Cap Screw
9	2	030-000-0040	SETSC, SQHD, 0.75 x 3.0"
10	2	030-000-0052	Swivel Pad, ¾ NC
11	2	030-000-0053	Nut, HX, 0.625-NC, GR5, Plated



BEAD BREAKERS

TOOLING

BEAD BREAKER RESTRAINT KIT

RMX-BBSR-KIT

A restraining device for those bead breakers that have the potential to “kick out”.

Kit includes

- RIMEX Universal Jaw 785-000-0068
- 16 mm Shackle (3.2 T Load Capacity)
- 1.5 m Anchor Strap with Interlok Ring (22.2kN rated)



RMX-BBSR-KIT

OTR GIANT BEAD BREAKER

AME-11000

- Popular tool for breaking beads on EM tyres, sizes 25 – 51”
- Works only on 5-piece wheels
- 4.25” stroke
- Use with 10,000psi air/hyd pump
- Weight: 14.5 kg



AME-11000

‘COMBI’ BEAD BREAKER

AME-11010

- Used on construction wheels up to 25”
- Works on single, 2 and 3-piece wheels
- 3.75” stroke
- Use with 10,000psi air/hyd pump
- Weight: 15.5 kg



AME-11010

MODIFIED “COMBI TYRE BEAD BREAKER

AME-11020

- Most parts interchange with common bead breakers in the market
- Least expensive bead breaker for new 3-piece wheels
- Larger clamp and feet allow tool to easily clamp onto wheels
- Compact design allows tool to be used on front or back side of wheel
- Weight: 17 kg



AME-11020

OTR-3000 GIANT TYRE BEAD BREAKER

AME-11054

- Designed specifically to work on Topy and RIMEX OE wheels found on Terex, Komatsu, Liebherr and LeTourneau
- Designed to prevent tool from kicking out while under load
- 25 T cylinder, 10” stroke ram delivers maximum force
- Jaw design works on most wheels 51 - 63”
- Weight: 24.95 kg



AME-11054

KOMATSU 930E BACK SIDE TYRE BEAD BREAKER

AME-11055

- 25 T cylinder with 8” stroke
- Angled base mounts to Komatsu 930E angled frame which results in a straight push
- Cylinder clamp with two mounting rings to chain onto the equipment
- Specifically designed for use with RIMEX DGS/IGLR or other speed wheels on Komatsu 930E trucks
- Weight: 14.83 kg



AME-11055

DIAMONDBACK ALUMINIUM BEAD BREAKER

AME-11076

- Lightweight aluminium reduces weight by 40%
- Longer feet allow better fit on to rim
- Feet fully engage rim flange and push against bead of tyre
- Weight: 14 kg



AME-11076

“STINGER” BEAD BREAKER

AME-11090

- Lightweight option for breaking 3-piece wheels
- Unique head designed to push on the bead, not the side wall of the tyre.
- Comes with two spacer wedges to prevent bead from re-seating
- 8” stroke
- Weight: 13 kg



AME-11090

MOBILE PRESS

Easily removes earthmover tyres from multi-piece rims. Inline trigger and regulator ensure safe working conditions. Suitable for 51 - 63” tyre sizes.

50 T MOBILE PRESS KIT

785-000-0060

Comes with 2 screw jacks, 4 universal jaws and all required wrenches and Allen Keys.

Additional 50 T kits can be added to the system as required.

MOBILE PRESS POWER UNIT

785-000-0059

Mobile Press Power Unit includes:

- Custom pneumatic torque wrench
- 1.8 m connection hose
- Air filter
- Pressure gauge
- Lubricator
- Inline trigger
- Factory set inline regulator



785-000-0059



BEAD BREAKING RAMS



HYDRAULIC RAMS

Used to break beads on 5-piece wheels. Removable plunger adapter allows the use of a variety of threaded attachments. These are essential for OTR wheel and tyre services.

PART NO.	DESCRIPTION	CAPACITY	STROKE	RETRACTED HEIGHT
AME-13010	Hydraulic Rams (10 T capacity)	10 T	2 1/8"	12.1 cm
AME-13020	Hydraulic Rams (10 T capacity)	10 T	4"	17.14 cm
AME-13030	Hydraulic Rams (10 T capacity)	10 T	6 1/8"	24.77 cm
AME-13040	Hydraulic Rams (10 T capacity)	10 T	8"	29.84 cm
AME-13050	Hydraulic Rams (10 T capacity)	10 T	10 1/8"	35 cm
AME-13060	Hydraulic Rams (30 T capacity)	30 T	2 7/16"	11.75 cm
AME-13090	Hydraulic Rams (25 T capacity)	25 T	8 1/4"	32.39 cm
AME-13095	Hydraulic Rams (25 T capacity)	25 T	10 1/8"	37.4 cm
AME-13100	Hydraulic Rams (25 T capacity)	25 T	6 1/4"	27.3 cm

10 T HYDRAULIC RAM KIT

AME-13075

- Extensions can be used individually or together
- Steel Extensions are durable enough for OTR applications
- Extensions include 1", 2" and 3" options
- 3" extension includes a screw in saddle that extends another 2"
- Ships in HD carrying case
- 10 T 1.5" stroke



AME-13075

55 T HEAVY DUTY SERIES

AME-13120

- Lightweight aluminum for easily handling and placing under the vehicle
- Includes "Shut-Off Valve" which allows the pump to be removed while the ram is extended
- Aluminum base plate included on 55 T models
- 55 T capacity
- 6" stroke
- 31 cm retracted height
- 46 cm max. height
- 13.2 kg



AME-13120

AIR/HYDRAULIC PUMPS

5 QUART RIMEX AIR/HYDRAULIC PUMP WITH DIAL GAUGE

AME-15924C-G

- 10,000 PSI hydraulic pressure
- Operates with as little as 80 PSI
- High density polyethylene reservoir
- Includes 5 m hose and coupler
- Weight: 8.2 kg



AME-15924C-G

3.5 QUART AIR/HYDRAULIC PUMP WITH POLYGLASS RESERVOIR

AME-15000

- 10,000 PSI of pressure to fit the majority of tools on the market
- Operates on 80 - 120 PSI of inlet air pressure
- Turbo II includes air motor oil level sight glass
- Weight: 7.3 kg



AME-15000

5 QUART AIR/HYDRAULIC PUMP WITH HOSE AND COUPLER

AME-15930C

- 10,000psi of hydraulic pressure
- Lightweight and operates with as little as 80 PSI
- Includes 2.4 m hose and coupler



AME-15930C

AIR/HYDRAULIC PUMP ACCESSORIES



AME-TC-371

AME-TC-372

AME-16000

AME-16050

AME-16060

AME-16070

AME-16120

PART NO.	DESCRIPTION
AME-TC-371	Quick Connect Hyd Coupler (Female Half)
AME-TC-372	Quick Connect Hyd Coupler (Male Half)
AME-16000	High Flow Hydraulic Coupler Set
AME-16050	High Flow Hyd Coupler (Male Half)
AME-16060	High Flow Hyd Coupler (Female Half)
AME-16070	Adapter for use with AME-11000 on Caterpillar Shur-Lok rims
AME-16120	10,000 PSI (700 bar) working pressure 12' hydraulic hose. Equipped with 3/8" NPT ends, including one swivel end. Meets IJ100 jack hose specification

IMPACT WRENCHES



AAA-MI17MSC



AAA-MI17HEL



AAA-IR2145QIMAX



AAA-MI20PSC



AAA-MI20PLC



AAA-IR2155QIMAX



AAA-IR285B



AAA-MI42EFL

IMPACT WRENCHES

PART NO.	DESCRIPTION	DRIVE	MAX TORQUE (ft.lbs.)	WEIGHT (kg)
AAA-MI17MSC	1/2" TOKU Impact Wrench	1/2"	575	2.5
AAA-MI17HEL	1/2" TOKU Impact Wrench (Ext Anvil)	1/2"	575	2.7
AAA-IR2145QIMAX	3/4" INGERSOLL RAND Impact Wrench	3/4"	1350	3.8
AAA-MI20PSC	3/4" TOKU Impact Wrench	3/4"	1050	3.9
AAA-MI20PLC	3/4" TOKU Impact Wrench (Ext Anvil)	3/4"	1050	4.2
AAA-IR2155QIMAX	1" INGERSOLL RAND Impact Wrench	1"	2000	3.4
AAA-IR285B	1" INGERSOLL RAND Impact Wrench	1"	2000	10.5
AAA-MI42EFL	1" TOKU Impact Wrench	1"	2310	10.5

TORQUE TOOLS

PNEUMATIC



RAD-17328



RAD-12345



RAD-12377



RAD-22238



RAD-12356

PART NO.	DESCRIPTION	DRIVE SIZE	TORQUE (ft.lbs.)		RPM	WEIGHT (kg)	NOISE LEVEL
			LOW	HIGH			
RAD-17328	RAD 15DX	1"	300	1500	10	3.9	80 db
RAD-12345	RAD 2000	1"	500	2000	13	5.1	85 db
RAD-12377	RAD 25GX	1"	500	2500	9	6.1	85 db
RAD-22238	RAD 30DX	1"	900	3000	8	6.7	85 db
RAD-12356	RAD 34GX	1"	1000	3400	12	9	85 db

Accuracy of +/-4%, Repeatability of +/-2%

All pneumatic tools include reaction arm, 3.6 m hose and fittings and all new ergonomic regulator cage (pictured right).

The RAD Pneumatic Series of nut runners are the most advanced pneumatic torque guns on the market today. With an accuracy of +/- 4% and repeatability of +/- 2% all tools in the range have the highest power to weight ratio of any torque gun on the market.



NX KITS

For the complete tool kit look no further than the RAD NX Kit.

Packaging the RAD tool of choice with a selection of reaction arms and a nose extension enables users to undertake 99% of bolting and applications without the need for additional accessories.

Standard Features

- Each kit contains:
- RAD Pneumatic Torque Tool
- Standard Reaction Arm
- Tool Holder with Filter/Regulator/Lubricator
- Nose Extension
- Standard Reaction Arm for Nose Extension
- Military Grade water/dust proof hard case



PART NO.	DESCRIPTION	SQ DR	TORQUE		SPEED	WEIGHT	NOISE LEVEL
			FT.LBS	NM	RPM	KG	DbA
RAD-15523	15DX-NX	1"	300-1500	407-2034	10	3.9	80
RAD-15525	2000-NX	1"	500-2000	678-2712	13	5.9	85
RAD-15522	25GX-NX	1"	500-2500	678-3390	9	6.1	85
RAD-15524	34GX-NX	1"	1000-3400	1356-4610	12	9.0	85

BATTERY

The newly designed B-RAD brush-less select series offers higher speed and longer battery life whilst incorporating a new torque display with new buttons.

The B-RAD select tool comes with two simple buttons allowing the user to easily select the target torque in increments of 10 ft.lbs/Nm throughout the calibrated range.

This tool is especially suitable for pre-torque and service jobs where electricity or compressed air are not available. The number of cycles per battery is dependent on stud length, lubrication and temperature.

- Latest Lithium-ion 18V5.2 Ah battery technology
- Accuracy of (+/-5% on full scale)
- Supplied complete with reaction arm, two 18V batteries and charger in a weather proof storage case.
- Significantly lower noise level
- Lighter tool
- Shorter overall length of tool
- Low temperature brush-less technology
- Longer battery warning on display
- Voltage level on display



PART NO.	DESCRIPTION	SQUARE DRIVE	TORQUE		SPEED	WEIGHT	NOISE LEVEL
			LB-FTS	NM	RPM	KG	DbA
RAD-28287	B-RAD Select BL 1500	1"	300-1500	400-2000	6	4	65
RAD-28288	B-RAD Select BL 1500-2	1"	300-1500	400-2000	19.5	4.9	65
RAD-28289	B-RAD Select BL 3000	1"	600-3000	800-4000	3	6.0	65
RAD-28290	B-RAD Select BL 3000-2	1"	600-3000	800-4000	20	6.7	65

*Supplied complete with reaction arm, two 18V batteries and charger in a weather proof storage case (pictured above).



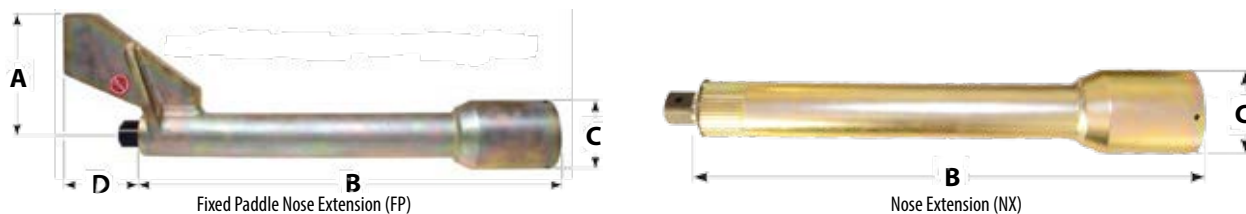
REACTION ARMS



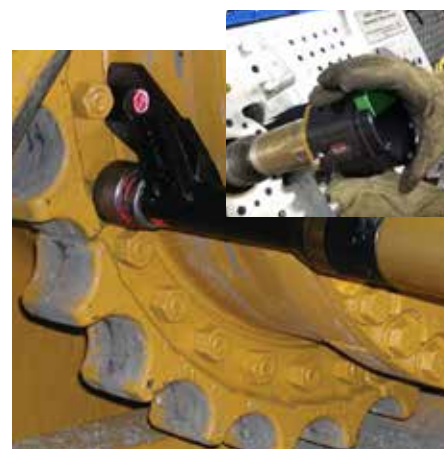
TOOL SERIES	STD ANGLED	ANGLED DEEP	90° STD	90° DEEP	DOUBLE ENDED	RETAINING RING
BATTERY SERIES						
B-RAD 1000 / 1000 - 2/DB-RAD 1000	RAD-17235	RAD-17236	RAD-13366	RAD-13367	RAD-13368	RAD-12733
B-RAD 1500 / 1500 - 2/DB-RAD 1500	RAD-14213	RAD-14214	RAD-17375	RAD-18480	RAD-19094	RAD-17367
B-RAD 3000 / 3000 - 2/DB-RAD 3000	RAD-21482	RAD-24814	RAD-25981	RAD-27231	RAD-25437	RAD-21474
PNEUMATIC SERIES						
RAD 7GX / 10GX / 10GX-2	RAD-17235	RAD-17236	RAD-13366	RAD-13367	RAD-13368	RAD-12733
RAD 15DX / 15DX-2	RAD-14213	RAD-14214	RAD-17375	RAD-18480	RAD-19094	RAD-17367
RAD 2000	RAD-10247	RAD-10395	RAD-15074	RAD-16143	RAD-10397	RAD-10038
RAD 25GX / 25GX-2	RAD-18863	RAD-18864	RAD-18250	RAD-18251	RAD-10516	RAD-10509
RAD 30DX / 30DX -2	RAD-21482	RAD-24814	RAD-25981	RAD-27231	RAD-25437	RAD-21474
RAD 34GX	RAD-18497	RAD-18497	RAD-11531	RAD-11534	RAD-11533	RAD-11350

NOSE EXTENSIONS

RAD Nose Extensions are engineered to enable the use of RAD tools in difficult to access areas where a standard tool would not normally fit.



PART NO.	TOOL MODEL	DIMENSIONS (MM)			
		A	B	C	D
CLASSIC/HIGH SPEED/UNDERGROUND MINING					
RAD-10733	FP RAD 2000 12" Nose Extension	140	330	72	92
RAD-15237	FP RAD 2000 15" Nose Extension	140	410	72	92
RAD-15096	FP RAD 2000 18" Nose Extension	140	470	72	92
RAD-27641	NX RAD 30 12" Nose Extension	140	325	72	92
RAD-27643	NX RAD 30 15" Nose Extension	140	401	72	92
RAD-27651	NX RAD 30 18" Nose Extension	140	478	72	92
DX SERIES/UNDERGROUND MINING					
RAD-14195	NX RAD 10GX 12" Nose Extension	N/A	324	63	N/A
RAD-14200	NX RAD 10GX 15" Nose Extension	N/A	400	63	N/A
RAD-14205	NX RAD 10GX 18" Nose Extension	N/A	475	63	N/A
RAD-18185	NX RAD 15DX 12" Nose Extension	N/A	324	70	N/A
RAD-19058	NX RAD 15DX 15" Nose Extension	N/A	400	70	N/A
RAD-19059	NX RAD 15DX 18" Nose Extension	N/A	475	70	N/A
RAD-12096	FP RAD 25GX 12" Nose Extension	140	330	72	92
DX SERIES/UNDERGROUND MINING <i>continued</i>					
RAD-14195	NX RAD 10GX 12" Nose Extension	N/A	324	63	N/A
RAD-12097	FP RAD 25GX 18" Nose Extension	140	470	72	92



PART NO.	TOOL MODEL	DIMENSIONS (MM)			
		A	B	C	D
RAD-11750	FP RAD 34GX 12" Nose Extension	140	330	80	92
RAD-11751	FP RAD 25GX 15" Nose Extension	140	410	80	92
RAD-11752	FP RAD 25GX 18" Nose Extension	140	470	80	92

MANUAL



RAD-RTSW



RAD-RTSBTW

PART NO.	DESCRIPTION	SQUARE DRIVE	TORQUE		WEIGHT (kg)
			FT.LBS.	NM	
RAD-RTSW-600	Professional Torque Wrench 100 - 600Nm	¾"	75 - 400	5-50	4.65
RAD-RTSW-1000	Professional Torque Wrench 200 - 1000Nm	¾"	150 - 740	200 - 1000	5.45
RAD-RTSBTW-700	Breaker Torque Wrench 700	¾" or 1"	100 - 500	150 - 700	6
RAD-RTSBTW-1000	Breaker Torque Wrench 1000	¾" or 1"	200 - 750	500 - 1000	7.3

SERVICE AND CALIBRATION

RIMEX has a fully equipped Service and Calibration workshop in Newman, Western Australia set up to test and calibrate all torque tools from 200ft/lb to 7,000ft/lb. Our state of the art test equipment is fully certified to NATA standards and everything we calibrate has a fully traceable certificate to meet industry requirements.

We are dedicated to providing the highest quality service at competitive prices. Our qualified workshop technicians can repair, service and calibrate most brands and models of torque tools, including manual.

Keep an eye out for our new service and calibration facility coming soon to Mackay!

Contact us today for more information.



TYRE LEVERS



TUBELESS TYRES

PART NO.	DESCRIPTION	LENGTH
MMT-5TL620	Standard Tyre Lever	620 mm
MMT-5TL600HD	Tyre Lever Heavy Duty	600mm
MMT-5MTL2	Face Truck Tyre Lever	910mm
MMT-5MTL1	Halte Truck Tyre Lever	910 mm
WON-1060	Halte Truck Tyre Lever (Michelin)	800 mm
WON-1289	Force Tyre Lever (Michelin)	750 mm
MMT-7CL900	EM Cleat Bar	900 mm

TYRE MOUNTING LEVERS

PART NO.	DESCRIPTION	LENGTH
HAL-T27	Lock Ring Tool	460 mm
AME-72120	Heavy Duty Forged Tyre Bar	600 mm
HAL-T41	Swan Neck Tyre Lever	760 mm
HAL-42	Bead Breaker Tool	760 mm
HAL-T45A	Tubeless Tyre Iron	940 mm
HAL-T47A	Straight Mount/Demount Tool	1320 mm
HAL-T48A	Heavy Duty Lock Ring Tool	940 mm
AME-71050	Golden Tool Set	—



WHEEL NUT INDICATORS

CHECKPOINT

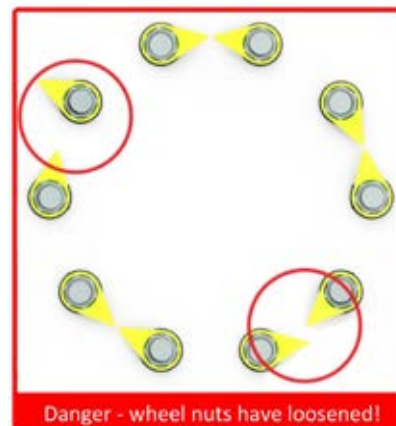
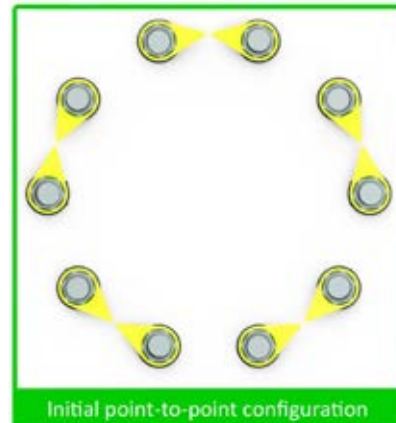
Correctly fitted checkpoints will indicate a loosening nut with a movement of the pointer. They are suitable for wheels with exposed nuts.

- Allows checks to be done visually
- Offers an improvement in your fleet maintenance and security
- Can aid in decreasing operational costs
- Demonstrates your commitment to safety
- Checkpoints also act as an indicator of hot wheel condition, e.g. if a brake is binding or a bearing collapsing, the indicator will distort or melt (up to 120°C).

Available in 17-50mm sizes in yellow. Restricted sizes are also available in red.

PART NO.	DESCRIPTION
WNI-19MM	Checkpoint 19mm Yellow
WNI-20MM	Checkpoint 20mm Yellow
WNI-21MM	Checkpoint 21mm Yellow
WNI-22MM	Checkpoint 22mm Yellow
WNI-23MM	Checkpoint 23mm Yellow
WNI-24MM	Checkpoint,24mm Yellow
WNI-25MM	Checkpoint 25mm Yellow
WNI-27MM	Checkpoint 27mm Yellow
WNI-28MM	Checkpoint 28mm Yellow
WNI-29MM	Checkpoint 29mm Yellow
WNI-30MM	Chechpoint 30mm Yellow
WNI-31MM	Checkpoint 31mm Yellow
WNI-32MM	Checkpoint 32mm Yellow
WNI-33MM	Checkpoint 33mm Yellow
WNI-34MM	Checkpoint 34mm Yellow
WNI-36MM	Checkpoint 36mm Yellow
WNI-38MM	Checkpoint 38mm Yellow
WNI-40MM	Checkpoint 40mm Yellow
WNI-41MM	Checkpoint 41mm Yellow
WNI-46MM	Checkpoint 46mm Yellow
WNI-50MM	Checkpoint 50mm Yellow

Available in bags of 100.



DUSTITE

Dustite Long Reach (LR) is suitable for wheels with deep dish or countersunk wheel nuts. Protects the wheel nuts from corrosion, road dirt, etc. Dustite LR also has a pointer that indicates loose nuts.

Available in sizes ranging from 19 mm to 41 mm. 30 mm Dustite LR is available for both a 30 mm and 45 mm shaft.

PART NO.	DESCRIPTION
WNI-DTLRY19	Checkpoint Dustite LR 19mm
WNI-DTLRY21	Checkpoint Dustite LR 21mm
WNI-DTLRY22	Checkpoint Dustite LR 22mm
WNI-DTLRY32	Checkpoint Dustite LR 32mm
WNI-DTLRY33	Checkpoint Dustite LR 33mm
WNI-DTLRY38	Checkpoint Dustite LR 38mm
WNI-DTLRY41	Checkpoint Dustite LR 41mm

Available in bags of 50.



WHEEL CHOCKS

Westchock are designed around the rugged requirements of the Australian mining, construction and transport industries, all Westchock products are built tough and are easy to handle and use.

Westchock wheel chocks are made from UV stabilised polythene, have inbuilt strength through clever internal crush resistant supports moulded into the one design, they are then polyurethane foam filled under pressure to ensure maximum fill, giving maximum strength with minimum weight making these chocks very user friendly and efficient.

All Westchocks have skid resistant rubber feet or strips to minimise the possibility of slippage even on very smooth surfaces, and all have easy to grab handles moulded into the main body of the chock



WNI-WC1055



WNI-WC1075



WNI-WC1105



WNI-WC1155

PART NO.	LIMIT	WEIGHT	DIMENSIONS
WNI-WC1055	Small, up to 5 T	1.5 kg	300mm L x 240mm W x 165mm H
WNI-WC1075	Medium, up to 40 T	8.0 kg	560mm L x 330mm W (plus 90mm handle) x 280mm H
WNI-WC1105	Large, up to 150 T	9.5 kg	580mm L x 400mm W x 270mm H
WNI-WC1155	X Large, 150 Tne and above	12.5 kg	650mm L x 440mm W x 390mm H

Mounting brackets are available for all sizes.

HUBODOMETER

Whether for maintenance purposes or logging kilometers, accuracy is critical. So, if your Hubodometer doesn't give you an honest, accurate calculation of kilometers travelled, you're losing money and profits. Stemco's Hubodometer is guaranteed to deliver kilometer accuracy within +/-2% (based on the life of the tyre).

- Spring loaded counterweight virtually eliminates spin when tyres hit bumps and pot-holes, assuring greater accuracy
- Calibrated to perform on over 2,500 specific tyre models and sizes to further ensure reliable mileage information
- Indispensable tool for scheduling maintenance, determining lease charges, validating guarantees, and calculating costs per kilometer

PART NO.	TYRE SIZE
HAL-650-0559	24.00 x 35
HAL-650-0517	27.00 x 49
HAL-650-0644	33.00 x 51
HAL-650-0642	37.00 x 57
HAL-650-0641	40.00 x 57
HAL-650-0565	53 / 80 x 63



DATA TRAC PRO

Field Programmable Electronic Hubodometer (all sizes including 63").

CRIBBING

STEEL CRIB KIT

AME-15002

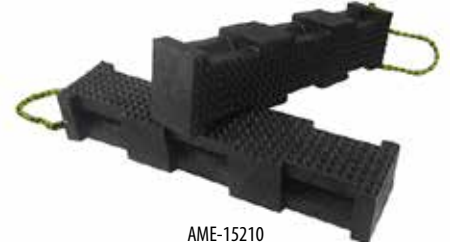
- Includes 76.2 mm, 152.4 mm and 228.6 mm stands
- Steel cribbing is durable - will not bend or warp
- Units can be nested together for 457.2 mm total lift
- Recessed area on cribbing fits 177.8 mm square plate on 55 T cylinders
- Each unit contains built-in carrying handle
- Tested/certified up to 100 T



AME-15002

SUPERSTACKER™ CRIBBING BLOCKS

- Certified and tested
- Interlocking or aggressive non-slip surface
- Non-conducting plastic resists oil and most chemicals
- Does not splinter, like wood



AME-15210



AME-15230

AME-15210

- 4" x 4" x 18"

AME-15230

- 6" x 7" x 24"

AME-15260

- Kit provides 12 pieces of cribbing and is ideal for lifting up to 150 T



AME-15260

TRUCK WHEEL DOLLY

Decreases back injuries when removing and replacing heavy truck tyre/wheel assemblies. Allows for easy removal and installation of tyre/wheel assemblies. Rollers allow for simple lug alignment.

TRUCK WHEEL DOLLY

AME-71300

- 24 cm roller accommodates low profile tyres
- For use with all 22.5 and 24.5 truck tyres
- Weight 8kg



AME-71300

SUPER SINGLE TRUCK WHEEL DOLLY

AME-71320

- 35.5 cm roller accommodates low profile tyres
- For use with all 22.5 and 24.5 truck tyres (including super singles)
- Weight 12kg



AME-71320

CHEMICAL SOLUTIONS

Rim Inhibitor74
Lubricants75

RIM INHIBITOR

RIMEXCEL

RXL-1-AP-1000-C

RIMEXCEL stops rust build-up by providing a protective anti-oxidant on wheels and rims. When installed based on the recommended quantity, RIMEXCEL provides rust protection from the day the wheel is mounted until it is dismounted.

- Reduces labour costs for tyre demounting, eliminates the need for messy coatings of rim and beads, and reduces rim loss from scale and painting.
- Available in a variety of container sizes to suit your specific site requirement.
- Specifically formulated light viscosity fluid that offers exceptional tyre and rim protection when added to the tyre air chamber.
- Non-flammable substance, safe for personnel and equipment
- Easy to use. Pour into the tyre prior to mounting, or use the RIMEXCEL Applicator Tank (TLS-TANK-RIMEXCEL) to install into inflated/mounted tyres.



RXL-1-AP-1000-C



- Removes existing rust scale from wheels and rims and reduces the amount of downtime normally required for refinishing wheels and rims.

SEAL-A-WHEEL

SEAL-A-WHEEL PREMIX

- CHM-SAW-205 (205 L drum)
- CHM-SAW (1000 L IBC)

SEAL-A-WHEEL CONCENTRATE:

- CHM-SAWCON (205 L drum)
- CHM-SAWCON (1000 L IBC)

Seal-A-Wheel is a water thin, blue liquid that is specifically formulated to extend rim and tyre life. In use, it improves sealing of the tyre to the rim and provides multi-metal corrosion inhibition to wheel and rim assemblies.

Seal-A-Wheel Premix or Concentrate is available in 205 L drums and 1000 L IBC. For remote locations, Seal-A-Wheel Concentrate is specifically formulated to be diluted on-site to reduce transportation costs.



CHM-SAW

LUBRICANTS

DR. DAVE'S PROFESSIONAL TIRE BEAD GEL

DR DAVES BEAD LUBE (10 kg drum)

Dr. Dave's Professional Tire Bead Gel is a light viscosity lubricant with a film strength that ensures tyre beads are properly seated. It is a water-free, non-toxic and non WHMIS controlled substance.

- Applies to a wet surface without diluting
- Will not freeze in a cold climate
- Will not evaporate on a hot wheel or in a warm climate

The environmentally friendly (rapidly biodegradable) bead gel can be applied with a brush, roller or a spray-on applicator.

Dr. Dave's does the job and leaves no sticky or greasy residue or material build-up behind on the tire bead.



DR DAVES BEAD LUBE

TIRE AND TUBE MOUNTING COMPOUND

MUR-2005

RIMEX Tire and Tube Mounting Compound is an affordable way to aid mounting procedures. Suitable for all mounting requirements and excess can be recovered and re-used. The compound also aids in preventing rust build-up on wheels/rims. It is a soap based, non-toxic and non WHMIS controlled substance.

- Economical
- Versatile, suitable for all mounting requirements
- Rust inhibitor added to help fight rim rust
- 11.3 kg drum



MUR-2005

RIM SOAP

CHM-RIMSOAP-20

- Tyre, rim and bead lubricant with excellent 'cling and film' properties'
- Safe on all metals
- Phosphate free
- Non-toxic and non-flammable
- Readily biodegradable
- 20 kg drum



CHM-RIMSOAP-20

MOUNTING CREAM-W-EM

R-5930539

- Mounting cream for large EM tyres
- Cream-type viscosity allows quick application to large areas
- Good mounting/demounting properties
- 5 kg drum



R-5930539

ENVIROWASH

CHM-ENVIROWASH.20 (20L drum)

CHM-ENVIROWASH.NRB (1000 L IBC)

ENVIROWASH is a quick breaking, water based cleaner specifically formulated to remove dirt, soils, light oil/grease and road grime from heavy and light vehicles on mine site.

- HV and LV general purpose detergent, non hazardous, pH neutral and high foaming
- Readily biodegradable, non-phosphate and quick breaking formulation
- Safe for surface and underground use
- Non-corrosive and very “free rinsing”
- Rapidly and effectively removes dirt, light oil/grease and road grime while rinsing to a streak-free finish



CHM-ENVIROWASH.20

ENVIROBLUE

CHM-ENVIROBLUE.20 (20L drum)

CHM-ENVIROBLUE.NRB (1000 L IBC)

ENVIROGREEN is a premium quick breaking water based and heavy duty cleaner and degreaser. It has been formulated for degreasing and pressure washing in the heavy engineering workshops and washpads associated with the mining, rail and oil/gas exploration.

- Heavy duty, non-hazardous, readily biodegradable, non-phosphate, quick-breaking and VOC free
- Specifically designed for degreasing and pressure washing
- Advanced concentrated formulation to remove oils, grease and grime from heavy and light equipment
- Safe for surface and underground use



CHM-ENVIROBLUE.20

ENVIROGREEN

CHM-ENVIROGREEN.20 (20L drum)

CHM-ENVIROGREEN.NRB (1000 L IBC)

ENVIROGREEN is a quick breaking, water based and heavy duty cleaner and degreaser. It has been specifically formulated for degreasing and pressure washing in heavy engineering workshops and washpads associated with the mining, rail and oil/gas exploration industries.

- Heavy duty, non-hazardous, readily biodegradable, non-phosphate, quick-breaking and VOC free
- Specifically designed for degreasing and pressure washing
- Advanced concentrated formulation to remove oils, grease and grime from heavy and light equipment
- Safe for surface and underground use



CHM-ENVIROGREEN.20

TOOLING SOLUTIONS

Rim Component Stands78
Tyre Inspection Stands78
Lock Ring Racks79
RIMEX Premounting Stands79
Rim and Tyre Mounting Stands80
Rim Transport Pallets80
Tyre Inflation Cage80
Tyre Storage Stands81
Component Roller Workstation81
Tyre Spike81
Heel and Toe Gauge82
Rock Ejector Pins82
Wheel Guide Bolt82
Wheel Alignment Tool82
Safety Handle for 1800 Bead Breaker82

RIM COMPONENT STANDS

The RIMEX Rim Component Stand is used for the safe storage of rim components on mine sites. By providing an elevated storage position off the ground, these stands minimise the risk of component corrosion. The design of the stands allows a back-to-back or side-by-side configuration to maximise site space efficiency.

49" AND 51" RIM COMPONENT STAND

The RIMEX Rim Component Stand is designed to store 49" and 51" rim components.

Part Number: RMX-0900

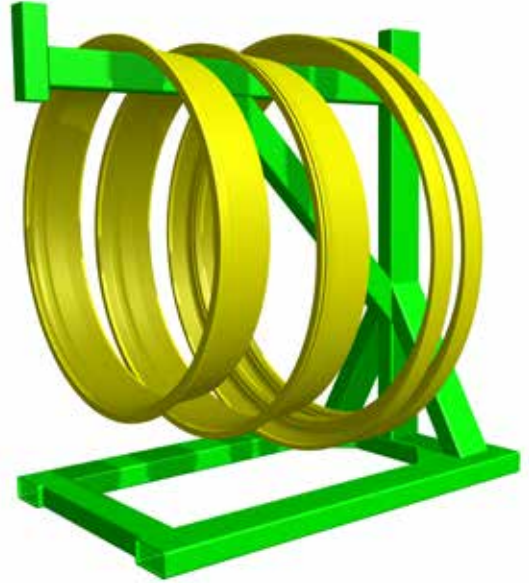
Safe Working Load: 2,700kgs

57" AND 63" RIM COMPONENT STAND

The RIMEX Rim Component Stand is designed to store 57" and 63" rim components.

Part Number: RMX-0200

Safe Working Load: 4,000kgs



TYRE INSPECTION STANDS

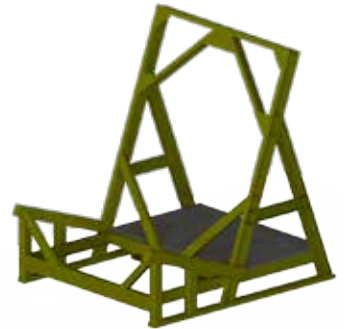
RIMEX Tyre Inspection Stands are designed to provide a raised platform to inspect tyre and rim assemblies. Tyres are securely held in a position which allows the ease of inspecting both the upper and lower sections of the beads. The stands can also be used for dewatering and aiding in the dispensing of tyre sealant.

16T TYRE INSPECTION STAND

Designed for 45 /65R45 through 59 /80R63 sized tyres including the largest 57" loader tyres.

Part Number: RMX-STAND-16T (45 - 63")

Safe Working Load: based on one tyre and wheel assembly with a maximum combined weight of 16,000kg.



10T TYRE INSPECTION STAND

Designed for 45" through 63" sized tyres.

Part Number: RMX-1700

Safe Working Load: based on one tyre and wheel assembly with a maximum combined weight of 10,000kg.



TYRE INSPECTION STAND

Designed for 24" through 35" sized tyres.

Part Number: RMX-2200

Safe Working Load: based on one tyre and wheel assembly with a maximum combined weight of 1,700kg.



LOCK RING RACKS

The RIMEX Lock Ring Rack is an individually spaced storage arrangement, improving manual handling safety by reducing the chance of pinch hazards.

ONE-PIECE LOCK RINGS

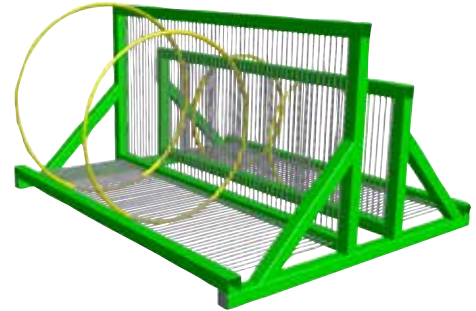
Designed for the storage of 51", 57" and 63" one-piece lock rings.

Part Number: RMX-0600
Capacity: 27 lock rings
Rack Weight: 202kgs
Rack Dimensions: 1000W x 2400L x 1750H



Designed for the storage of 33" to 49" one-piece lock rings.

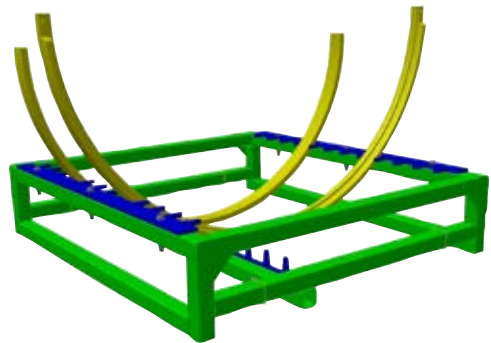
Part Number: RMX-2500
Capacity: 112 lock rings
Rack Weight: 277kgs
Rack Dimensions: 2100W x 2400L x 1300H



TWO-PIECE LOCK RINGS

Designed for the storage of 57" and 63" two-piece lock rings.

Part Number: RMX-0500
Capacity: 13 lock rings
Rack Weight: 65kgs
Rack Dimensions: 1200W x 1200H x 300H



RIMEX PREMOUNTING STANDS

The RIMEX Premounting Stand allows Tyre Technicians to mount RIMEX DGS and IGLR wheel components into tyres and store until needed. By preparing the tyres prior to installation, tyre servicing downtime is dramatically reduced.

ADVANTAGES:

- Tyres are stored vertically with premounted wheel components
- Wheel components stay with the tyre during changes or rotations
- Tyres can be rotated across all positions on the truck for maximum wear and longer service life
- Wheel components can be pressed out of tyres when time permits

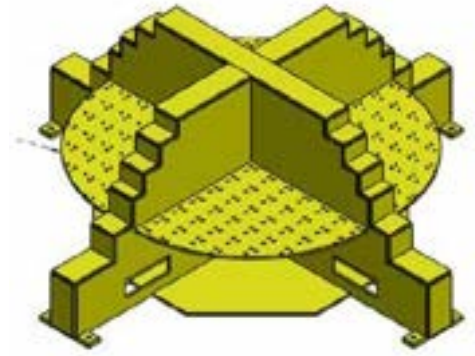
CONTACT YOUR LOCAL RIMEX BRANCH FOR MORE INFORMATION.



RIM AND TYRE MOUNTING STANDS

Rim and Tyre Mounting Stands aid in the horizontal fitment of Earthmover tyres ranging from 25" to 63" diameters.

CONTACT YOUR LOCAL RIMEX BRANCH FOR MORE INFORMATION.



RIM TRANSPORT PALLETS

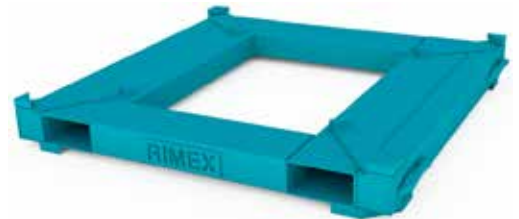
RIMEX Rim Transport Pallets are manufactured in accordance with AS 15541.1-2014. Fully customizable and highly durable, they have been specifically designed for the safe transport of OTR wheels and rims from 49" to 63".

Part Number: 783-000-0002

Safe Working Load: 5,000 Kg

ADDITIONAL DESIGNS AVAILABLE UPON REQUEST.

CONTACT YOUR LOCAL RIMEX BRANCH FOR MORE INFORMATION.



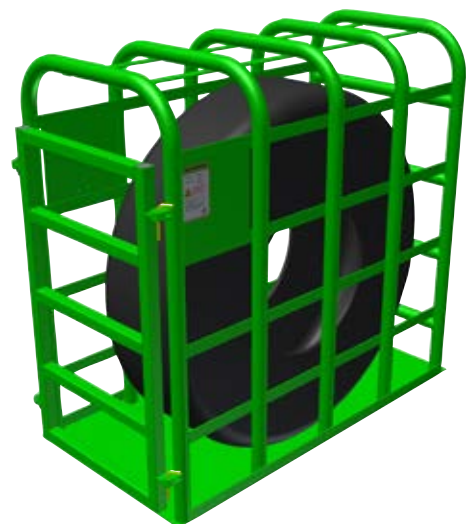
TYRE INFLATION CAGE

The RIMEX Tyre Inflation Cage is designed to provide an enclosed area for the inflation of "small" vehicle wheels. The cage constrains all wheel components in the event of a "blowout". A wheel blowout has the potential to cause serious injury to personnel located within close proximity of the cage

Part Number: RMX-2700

Maximum Inflation Pressure: 145 PSI / 1000 KPA

Maximum Tyre Size: 1400R25 (or equivalent)



TYRE STORAGE STANDS

This mult-channel structure provides a modularised solution, allowing an array of modules to be coupled together to suit site specific tyre storage requirements. The frames can be built on site or shipped fully assembled.



29" - 49" TYRE STORAGE STANDS

Part Number: **RMX-0800**

51" - 63" TYRE STORAGE STANDS

Part Number: **RMX-0700**

COMPONENT ROLLER WORKSTATION

The Component Roller Workstation is used for the inspection and cleaning of rim components. The workstation is designed to accommodate 45" to 63" side rings and bead bands. Components can be easily rotated for inspection and maintenance.

Part Number: **RMX-1700**

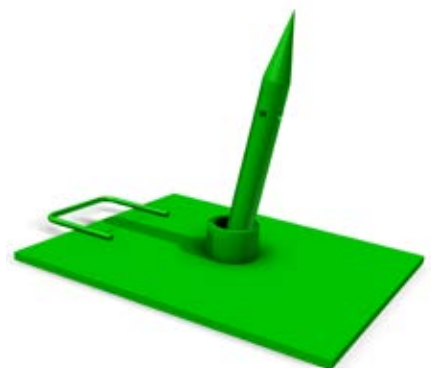
Safe Working Load: 7,500 Kg



TYRE SPIKE

Deflates the tyre, causing limited damage to the tyre during insertion and can be safely removed from the tyre after deflation has occurred without causing further damage or injury to personnel. Used when conventional deflation methods are not possible. RIMEX Tyre Spike comes with a 5T strap to extract the spike from the tyre.

Part Number: **RMX-1600**



RMX-1600

HEEL AND TOE GAUGE

Use the Heel and Toe Gauge to accurately measure wear on tyres in the heel and toe regions.

Part Number: RMX-HT-GAUGE



ROCK EJECTOR PINS

Secures the Rock Ejector Pins in position to assist with tyre maintenance. Assorted sizes available to suit a variety of machines.

Optional Extension Pole also available.

CONTACT YOUR LOCAL RIMEX BRANCH FOR MORE INFORMATION.



WHEEL GUIDE BOLT

When removing and installing wheels, this handy tool makes the job easier, and safer! Assorted sizes available to suit a variety of machines.

CONTACT YOUR LOCAL RIMEX BRANCH FOR MORE INFORMATION.



WHEEL ALIGNMENT TOOL

The Wheel Alignment Tool measures the front wheel alignment quickly and accurately on all large earthmover trucks. Includes laser measurement device.

Part Number: RMX-WAT-57



RMX-WAT-57

SAFETY HANDLE FOR 1800 BEAD BREAKER

Designed specifically for the 1800 Bead Breaker, this lightweight metal sleeve, protects the operator from crush or pinch injuries when the ram is retracting.

Part Number: AME-11006



AME-11006

RIMEX

5 LOCATIONS TO SERVE YOU BETTER!

MAKAY, QLD

77-83 Michelmore Street
4952-5585

MT ISA, QLD

6 Kolongo Crescent
4743-4204

MUSWELLBROOK, NSW

Lot 651, Strathmore Road
6541-4634

PERTH, WA

31 Redcliffe Road
9258-6440

NEWMAN, WA

20 Pardoo Street
9175-0866